



# Quality of cocoa (*Theobroma cacao* L.) DNA from foliar tissue at different stages of development

## Calidad del ADN de cacao (*Theobroma cacao* L.) a partir del tejido foliar en diferentes etapas de desarrollo

Ana María Henao Ramírez\*, Héctor Jaime Salazar Duque and Aura Inés Urrea Trujillo

Faculty of Exact and Natural Sciences, Institute of Biology, Laboratory of Plant Physiology. Universidad de Antioquia UdeA, Colombia.  
Author for correspondence: amaria.henao@udea.edu.co

### Abstract

*Theobroma cacao* L. and its products are consumed worldwide. Those products are of great research interest due to antioxidant properties of some of their polyphenolic constituents. The amount of these polyphenols and polysaccharides has shown that can interfere with the high quality and quantity of nucleic acids for molecular research. Therefore, cocoa DNA extraction protocols can require a large amount of plant material and optimization time according with plant material source. The aim of this study was to evaluate the quality and quantity of DNA isolated from field plant leaves at different developmental stages from *TSH565* genotype using different DNA extraction protocols. In addition, DNA extraction protocol was evaluated for small amount of young leaf tissue collected from *in vitro* plantlets from *CCN51* and *TSH565* genotype. Subsequently, the selectivity of different polymerase enzymes for PCR amplification using the obtained DNA was evaluated. This study revealed that D stage of development in field leaves was efficient for extraction of high-quality genomic DNA using the PowerPlant® Pro Kit modified (183.80 ng.μL<sup>-1</sup> (1.98 A260/A280-1.98 A260/A230)). Highest DNA concentrations were obtained for FPL with 128.68 ng.μL<sup>-1</sup> and 114.42 ng.μL<sup>-1</sup> for *CCN51* and *TSH565* respectively and with IVL, which was obtained 54.24 ng.μL<sup>-1</sup> for *CCN51* and 56.52 ng.μL<sup>-1</sup> for *TSH565* per 0.1 g of leaf tissue. *Taq* DNA Polymerase recombinant of Thermo Scientific® showed the highest performance specifically for this study, contributing to the undoubted amplification of molecular markers like microsatellites (SSRs). The results obtained have allowed improvements in genetic analyses and molecular studies using a reduced amount of plant tissue.

**Key words:** DNA isolation; field cocoa plants; *in vitro* cocoa plantlets; leaf development; PCR; SSRs.

### Resumen

*Theobroma cacao* L. y sus productos se consumen en todo el mundo. Esos productos son de gran interés para la investigación debido a las propiedades antioxidantes de algunos de sus componentes polifenólicos. La cantidad de estos polifenoles y polisacáridos ha demostrado que puede interferir con la alta calidad y cantidad de ácidos nucleicos para la investigación molecular. Por lo tanto, los protocolos de extracción de ADN de cacao pueden requerir una gran cantidad de material vegetal y tiempo de optimización de acuerdo con la fuente de origen del material vegetal. El objetivo de este estudio fue evaluar la calidad y la cantidad de ADN aislado de hojas de plantas de campo en diferentes etapas de desarrollo a partir del genotipo *TSH565* utilizando diferentes protocolos de extracción de ADN. Además, se evaluó el protocolo de extracción de ADN para una pequeña cantidad de tejido foliar joven recogido de plántulas *in vitro* de genotipo *CCN51* y *TSH565*. Posteriormente, se evaluó la selectividad de diferentes enzimas polimerasas para la amplificación por PCR usando el ADN obtenido. Este estudio reveló que la etapa D del desarrollo foliar en condiciones de campo fue eficiente para la extracción de ADN genómico de alta calidad usando el kit PowerPlant® Pro modificado (183.80 ng.μL<sup>-1</sup> (1.98 A260 / A280-1.98 A260 / A230)). Las concentraciones más altas de ADN se obtuvieron para FPL con 128.68 ng.μL<sup>-1</sup> y 114.42 ng.μL<sup>-1</sup> para *CCN51* y *TSH565*, respectivamente y con IVL, que se obtuvo 54.24 ng.μL<sup>-1</sup> para *CCN51* y 56.52 ng.μL<sup>-1</sup> para *TSH565* por 0.1 g de tejido foliar. *Taq* ADN polimerasa recombinante de Thermo Scientific® mostró el mayor rendimiento específicamente para este estudio, lo que contribuye a la amplificación indudable de marcadores moleculares como los microsatélites (SSR). Los resultados obtenidos han permitido mejoras en análisis genéticos y estudios moleculares utilizando una cantidad reducida de tejido vegetal.

**Palabras clave:** Aislamiento de ADN; plantas de cacao de campo; plántulas de cacao *in vitro*; desarrollo de hojas; PCR; SSRs.

## Introduction

Cacao (*Theobroma cacao* L.), is a tropical species that provides sustainable economic and environmental benefits to some of the poorest and most ecologically sensitive areas of the world. The upper Amazon, including parts of Ecuador, Peru, Brazil, and Colombia, is generally believed to be the origin center of cacao due to high morphological and genetic diversity observed in this region (Richardson, Whitlock, Meerow & Madriñán, 2015).

In general sense, seeds or grafted seedlings are used as cacao planting materials. Since cacao is naturally cross-pollinated, cacao planting materials from seeds usually exhibit a highly heterogeneous genetic background. Cacao planting materials propagated clonally through grafting result in both low multiplication rate and undesirable bushy-like growth pattern.

Micropropagation through plant tissue culture expects to overcome these obstacles. Utilizing plant tissue culture technology and molecular biology to accelerate the improvement of cacao breeding programs. In addition, an emergence of molecular marker analyses in genome studies has greatly enhanced the speed and efficacy of cacao breeding programs (Thondaiman, Rajamani, Senthil, Shoba & Joel, 2013).

In fact, in previous breeding studies, numerous populations are sampled to detect candidate genes or molecular markers associated with economically important traits. Molecular markers serving as an important tool to check genetic uniformity and nature of micrografted plants (Tiwari, Chandel, Gupta, Gopal, Singh & Bhardwaj, 2013).

Cocoa contains high levels of polyphenols, which can interfere with DNA isolation. Furthermore, the presence of inhibitor components can decrease the efficiency or interfere with DNA PCR (Pinto, Forte, Guastadisegni, Martino, Schena & Tantillo, 2007). In this sense, several studies have reported the efficiency of using cocoa leaf material for DNA extraction, however, has not been considered leaf developmental stage as an important variable for obtaining high quantity and quality of DNA.

A modified CTAB method was applied to carry out molecular marker analysis to isolate good-quality DNA from stored leaf tissues (Bhattacharjee, Kolesnikova-Allen, Aikpokpodion, Taiwo & Ingelbrecht, 2004). Alternatively, Ferreira-Santos, Vanderlei, Clément, Pires, Matos, Batista & Peres (2014), used a mixed alkyltrimethylammonium bromide (MATAB) method for high density linkage map using fresh adult cocoa leaves. Saunders, Mischke, Leamy

& Hemeida (2004), proved the effectiveness of DNeasy Plant kit® (Qiagen) for DNA extraction to evaluate SSR primers for DNA fingerprinting leaf material. Haymes, Mischke, Scott & Saunders (2004), verified this kit with polyvinyl polypyrrolidone (PVPP) for DNA isolation of cocoa leaf material. Furthermore, DNeasy Plant kit® was used in different studies like genetic stability in cocoa embryo cryoconservation.

Conversely, cocoa genetic identity using molecular markers (Fang, Meinhardt, Mischke, Bellato, Motilal & Zhang, 2014) and epigenetic fidelity of cocoa somatic embryos in cryopreservation and postcryopreservation are reported. However, in the above-mentioned works, leaf developmental stage was not considered as an important variable on DNA extraction considering that it is the most used tissue material and is crucial to obtain high quality and quantity of DNA.

Given these concerns, the aim of this study was to evaluate three different cocoa leaves developmental stages applying some protocols for DNA extraction in field plant (FPL) and *in vitro* plantlets (IVL). Different PCR amplification conditions were evaluated to obtain a positive amplification for genetic analysis.

## Material and methods

### Plant material

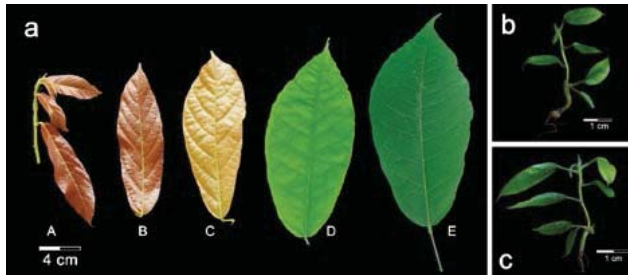
DNA extraction methods using FPL and IVL regenerated by somatic embryogenesis were evaluated. In this study was used cocoa genotypes *TSH565* and *CCN51*. Plant materials were collected from Nacional de Chocolates Company (CHCN) in Bucaramanga-Santander, Colombia. Cocoa trees were identified and labeled for each selected cocoa genotype from CNCH.

### Propagated plant material by grafting in field

To start DNA genomic extraction from *TSH565* genotype, three developmental stages of FPL was used. Cacao leaf development proceeds through successive stages categorized as stages A-E (Figure 1a).

Stage A, emerging cacao leaves are translucent and thin, often with distinctive red color and this stage corresponds almost to 10 days during time from leaf emergence. Stages B and C, corresponds to leaves undergo expansion but are still thin, translucent and pigmented and they are 15 and 20 days, respectively. Stage D, is identified 25 days from emergence, where the elongation ceases, and leaf accumulates chlorophyll, becomes light green, leaf non-translucent and begins hardening. Stage E, leaf

fully developed, leathery, and dark green with 30 days of development (Mejia *et al.*, 2012). In this study were used C, D, E stages of *TSH565* cocoa genotype to evaluate the efficiency of DNA extraction methods.



**Figure 1.** Different resources of cocoa leaves, field plants leaves (FPL) and *in vitro* plantlets leaves (IVL) for extraction of genomic DNA. a) Developmental stages of leaves from field plants of *CCN51* genotype. Stage A, emerging cacao leaves with red color. Stage B and C, leaves undergo expansion with reddish to pale brown color. Stage D, leaf accumulates chlorophyll with light green. State E, leaf fully developed with dark green (Mejia, Gultinan, Shi, Landherr & Maximova, 2012). *In vitro* plantlets of b) *TSH565* genotype and c) *CCN51* genotype with 60 days in medium MM6.

A total of 5 cocoa trees were labeled for each genotype and through visual inspection were taken on average 10 leaves in good phytosanitary conditions, were cleaned superficially and separated with tissue wipers. Subsequently, were packed into resalable plastic bags and pre-cooled with dry ice to ensure lowest possible temperature during 12 hours of transportation to laboratory. Once in laboratory, they were conserved at  $-80^{\circ}\text{C}$  until processing.

### Propagated plant material by somatic embryogenesis

*In vitro* tissue culture experiments were conducted with the same genotypes from CNCH. Immature flowers were stored in sterile basal DKW salts (Ajijah, Hartati, Rubiyo & Sukma, 2016) on ice during transportation and carried out to laboratory. Flower buds were surface sterilized following the protocol described by Urrea, Gallego & Atehortúa (2011), with modifications. Staminodes and petals were extracted from the basal portion of flower bud. SE was induced according to the protocol described by Henao, de la Hoz, Ospina, Atehortúa & Urrea (2018), with some modifications.

### DNA Extraction

For genomic DNA extraction of FPL, different methodologies were evaluated, CTAB extraction described by Michiels, Van den, Tucker, Van Riet & Van Laere (2003), and commercial kits such as DNeasy Plant Maxi Kit® Qiagen (Qiagen) and PowerPlant® Pro DNA Isolation Kit MoBio (Qiagen) following the instructions (Table 1).

**Table 1.** General characteristics of each DNA extraction method used.

Method	Lysis procedure	DNA recovery	Processing time	Additional reagents/ Spatial equipment required
CTAB Extraction	Chemical	Solvent precipitation	15	None
PowerPlant® Pro Kit	Chemical, mechanical and thermal	Column adsorption	4	High speed stirrer
DNeasy Plant Maxi Kit®	Chemical and thermal	Column adsorption	2	None

All protocols have been described as efficient for isolating good-quality DNA from samples with large quantities of secondary compounds. In addition, for removing mucilaginous polysaccharides of cocoa tissues, the different protocols for DNA extraction were carried out with an additional wash with a sorbitol buffer. Finally, once obtained the best method for DNA extraction from FPL, the selected method was used for IVL.

DNA extraction of *in vitro* plantlets with three months on MM6 medium with leaves in a size between 2-5 cm were selected under sterile conditions using a laminar flow chamber (Figure 1 b-c), leaves were cut and immediately transferred into tubes of 2 ml in liquid nitrogen and taken for storage at  $-80^{\circ}\text{C}$  until processing.

Sorbitol buffer was established according to Souza, Muller, Brandao & Lovato (2012), which was added to 0.1 g of leaf tissue, and tubes were placed into cellular disruptor device (BeadBug™), during 5 minutes at 3000 rpm, and subsequently, heated at  $65^{\circ}\text{C}$ . Finally, samples were centrifuged during 10 minutes at 5000 rpm and supernatant was lastly discard. This procedure was repeated twice and continue with the other protocol steps.

### DNA Concentration and Purity

The quality and quantity of DNA obtained were determined using microvolume 2000 NanoDrop™ (Thermo Scientific) spectrophotometer and later confirmed on agarose gel 0.8%–stained with ethidium bromide ( $0.5 \text{ mg}\cdot\text{mL}^{-1}$ ), subsequently visualized under an UV lamp. DNA quantity and purity were evaluated by measuring A260/A280 and A260/A230 absorbance ratios.

### PCR amplification

#### Microsatellite Markers

The set of oligonucleotide primers were chosen for presenting the greatest polymorphism mTc-CIR17, mTc-UniCAMP5, mTcCIR12, mTc UniCAMP01, mTcCIR40, mTc-UniCAMP04, mTc-UniCAMP03, mTc-UniCAMP02 (Lanaud,

Risterucci, Pieretti, Falque, Bouet & Lagoda, 1999; Santos, Cerqueira-Silva, Mori, Ahnert, Correa & Souza, 2012) using the polymorphism information content (PIC) (Table 2). Primers were

synthesized by MacroGen (MacroGen Humanizing Genomics) and were used for PCR amplification testing.

**Table 2.** Characteristics for the eight set of microsatellite primers utilized for testing efficiency in PCR amplification from genomic DNA in *T. cacao*.

	Primer sequence	T (°C)	PIC	Size range bp
mTc-CIR17	(5' -AAGGATGAAGGATGTAAGAGAG -CCCATACGAGCTGTGAGT-3')	51	0.5	256-296
mTc-UniCAMP5	(5' -AGCTGTTTATGATTCACATCC-GAAGCAGCAATTGTAACCAC-3')	55	0.45	230-242
mTcCIR12	(5' -TCTGACCCCAAACCTGTA- ATTCCAGTTAAAGCACAT-3')	44	0.80	165-256
mTc UniCAMP01	(5' - TCATGCAAAGCAAAGTGAAG-ACGGGAAACTCATATTACA-3')	47	0.27	190-208
mTcCIR40	(5' - AATCCGACAGTCTTTAATC-CTTAAATGTTATGTGTATGC-3')	38	0.84	259-284
mTc-UniCAMP04	(5' -GCAGCGAGAGACAAAAGATATTTGACTGAAATGGTGGTGAAGAAGCAG-CAATTGTAACCAC-3')	53	0.69	161-186
mTc-UniCAMP03	(5' -GCGATGCCAAAAGTTGTGTA- AGAGAAGGGATGGGTGTGTG-3')	56	0.66	292-292
mTc-UniCAMP02	(5' -GGTCTCCAAGCTGAGTAACA-CTCCATTGTCATCGCATT-3')	62	0.69	260-290

### Amplification of microsatellite markers (SSR's)

For the PCR amplification, annealing temperature for each SSR's was standardized using the available information in previous studies with each primer temperature for 40 s (Temperature decreased by 1°C for every cycle) (Table 2).

Different types of *Taq* polymerase were used to verify DNA performance as follows: *GoTaq*® DNA Polymerase (Promega) (Mix 1 (1 U.µl<sup>-1</sup>), *Taq* polymerase (not commercial) (Mix 2 0.5 U.µl<sup>-1</sup>), *GoTaq*® Green Master Mix (Promega) (Mix 3 (1 U.µl<sup>-1</sup>)), and *Taq* DNA Polymerase recombinant (Thermo Scientific) (Mix 4 (1 U.µl<sup>-1</sup>)) were evaluated. PCR reactions mixture (20 µl) containing 2.7 µL template DNA (10 ng.µl<sup>-1</sup>), 1X PCR Thermo buffer, 2 mM dNTPs, 2.5 pmol each of forward and reverse primers, 2 mM MgCl<sub>2</sub>, 0.5 ng.ml<sup>-1</sup> BSA, each of the *Taq* Polymerases described before and water to complete the total volume of the reaction.

Amplifications were carried out in a thermal cycler (LTCG Labocon 48-101). The amplified products were checked by agarose gel electrophoresis 3% after staining with ethidium bromide (0.5 mg.ml<sup>-1</sup>). Sizes were estimated by comparison with a DNA standard length marker (Gene ruler 50bp DNA HyperLadder® Bioline).

## Results

### Evaluation of developmental stages from leaves in cocoa field plant (FPL)

Three different protocols of DNA extraction were evaluated to determine their efficiency, from different leaves developmental stages. Stages C, D and E were selected, stage C are young leaves with a bronze coloration to light green, stage D

is the transition between young leaves to mature leaves with a strong to light green and stage D are mature leaves with a dark green and leathery (Figure 1a).

A higher A260/A280 (≥2) is indicative of RNA contamination, whereas lower A260/A280 (≤1.8) ratio is encountered when a contamination with protein occurs. When absorbance values ratio at 260/230 (≤2), DNA could be contaminated by carbohydrates, salts or organic solvents (Demeke & Jenkins, 2010). The commercial DNeasy Plant Maxi Kit® failed to produce a good quality and high quantity of DNA, DNA concentration was no more than 25.80 ng.µl<sup>-1</sup> with lower quality A260/A280 (≥2) and A260/A280 (≤1.8) ratios. CTAB Extraction method resulted in lower DNA yields with C leaves stage (5.27 ng.µl<sup>-1</sup>-2.38 A260/A280-0.28 A260/A230) and leaves of stage D (73.77ng.µL<sup>-1</sup>; 60 A260/A280-1.03 A260/A230). Leaves of stages D and E reaching higher concentrations, leaves of stage E was obtained with 136.77 ng.µL<sup>-1</sup> (1.77 A260/A280-1.15 A260/A230) and with leaves of stage D plus sorbitol buffer was obtained 137.27 ng.µL<sup>-1</sup> (1.66 A260/A280-1.66 A260/A230). DNA extractions with PowerPlant® Pro Kit resulted in highest DNA yields with all stages leaves. In leaves of stage D was obtained with 37.53 ng.µL<sup>-1</sup> (1.89 A260/A280-1.22 A260/A230); stage D 71.77 ng.µL<sup>-1</sup> (1.91 A260/A280-1.66 A260/A230), following the C leaves stages 138.47 ng.µL<sup>-1</sup> (0.69 A260/A280 -0.20 A260/A230) and the stage D plus sorbitol buffer was 183.80 ng.µL<sup>-1</sup> (1.98 A260/A280-1.98 A260/A230) (Table 3).



**Table 3.** The amount and quality (OD260/A280-OD260/A230) of DNA isolated by different methods from different leaf stage of field plants (FPL) of *TSH565* genotype.

Method	Tissue	DNA concentration (ng/μL)	Absorbance ratio	
			OD260/A280	OD260/A230
CTAB Extraction	leaf stage C	5.27±2.81	2.38±0.38	0.28±0.01
	leaf stage D	73.77±0.15	1.60±0.15	1.03±0.15
	leaf stage E	136.77±79.87	1.77±0.00	1.15±0.27
	leaf stage D +Sorbitol buffer	137.27±31.31	1.66±0.09	1.66±0.09
PowerPlant® Pro Kit	leaf stage C	138.47±28.17	0.69±0.14	0.20±0.02
	leaf stage D	71.77±16.18	1.91±0.05	1.66±0.12
	leaf stage E	37.53±6.15	1.89±0.04	1.22±0.15
	leaf stage D +Sorbitol buffer	183.80±1.65	1.98±0.02	1.98±0.02
DNeasy Plant Maxi Kit®	leaf stage C	22.57±8.53	1.03±0.07	0.16±0.01
	leaf stage D	18.17±0.55	1.69±0.08	0.71±0.05
	leaf stage E	3.93±0.80	2.07±0.03	0.25±0.02
	leaf stage D +Sorbitol buffer	25.80±9.18	0.95±0.13	0.46±0.22

Data are means ±SE (n = 3).

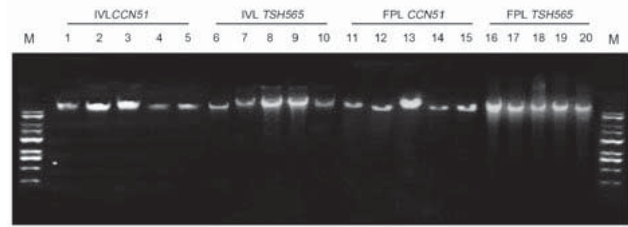
### Evaluation of DNA extraction in leaves of plant field and in vitro plantlets (IVL)

A protocol extraction for genomic DNA PowerPlant® Pro Kit is suitable for DNA leaf tissue of cocoa for both field and *in vitro* leaves. Highest DNA concentrations were obtained for FPL with 128.68 ng.μL<sup>-1</sup> and 114.42 ng.μL<sup>-1</sup> for *CCN51* and *TSH565* genotypes per 0.1 g of leaf tissue (Table 4). Subsequently, with IVL was obtained 54.24 ng.μL<sup>-1</sup> for *CCN51* and 56.52 ng.μL<sup>-1</sup> for *TSH565*, all results have allowed a high quantity with sufficient quality for later DNA applications (Figure 2).

**Table 4.** Quality and quality (OD260/A280-OD260/A230) of DNA isolated from field plants leaves (FPL) and *in vitro* plantlets leaves (IVL) of *TSH565* and *CCN51* with protocol for genomic DNA PowerPlant® with sorbitol buffer.

Accession	Tissue	DNA concentration	Absorbance ratio	
			OD260/A280	OD260/A230
<i>TSH565</i>	leaf stage D of FPL	114.42±47.56	1.93±0.06	1.83±0.19
	Young leaves of IVL	56.52±9.81	1.92±0.05	2.25±0.22
<i>CCN51</i>	leaf stage D of FPL	128.68±84.89	1.83±0.02	2.02±0.11
	Young leaves of IVL	54.24±12.51	1.88±0.01	2.42±0.87

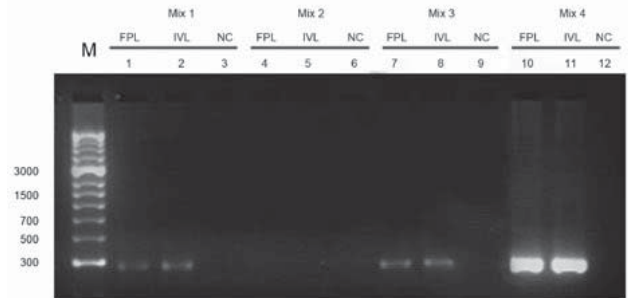
Data are means ±SE (n = 5).



**Figure 2.** DNA quality in agarose gel (0.8%) with protocol for genomic DNA PowerPlant® from FPL and IVL of *TSH565* and *CCN51*. Numbered lanes from left to right with molecular marker (M: Gene ruler 1kb DNA HyperLadder® Bioline) (Cat no BIO-33053) IVL *CCN51* (lanes 1-5), IVL *TSH565* (lanes 6-10), FPL *TSH565* (lanes 11-15), FPL *CCN51* (lanes 16-20).

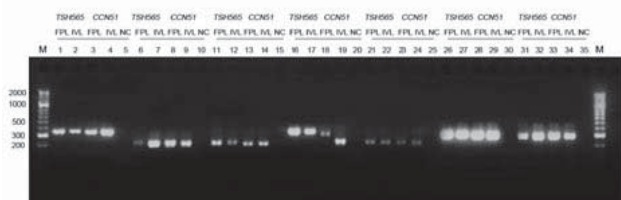
### PCR amplification

Amplification conditions required the evaluation of different parameters in PCR reaction mixtures and these were modified according to positive amplification assays. The most important changes corresponded to different *Taq* polymerase enzyme that were used. With the mixture 1, 2, and 3 were obtained positive amplification using mTcCIR 17 SSR. However, the best result for this study was obtained with mixture 4, which is the one that uses the Thermo *Taq* polymerases enzyme (Figure 3).



**Figure 3.** PCR amplification of different *Taq* polymerase treatments for mTcCIR 17 microsatellite in agarose gel (3%) from FPL and IVL of *TSH565*. Numbered lanes from left to right with the molecular marker (M: Gene ruler 1kb DNA HyperLadder® Bioline), Mix 1 (GoTaq®) (Lanes 1 and 2), Mix 2 (*Taq* not commercial) (lanes 4 and 5), Mix 3 (GoTaq® Green Master Mix) (lanes 7 and 8), Mix 4 (*Taq*® Thermo Scientific) (lanes 10 and 11) and negative control (NC) (Lanes 3, 6, 9, 12).

Despite of positive amplification obtained with mixture 4, an optimization was necessary to acquire a better define amplification band, by the fact that DNA concentration (1.75 ng.μL<sup>-1</sup>) had achieved a decreasing (1.35 ng.μL<sup>-1</sup>), in addition, have allowed an improvement in the volume of magnesium, which had decreased in a final concentration of 2 mM, to obtain a salt balance in final reaction concentration (Figure 4). In this sense, it was evident that quality and quantity of DNA obtained were sufficient for subsequent analyzes performed through SSR's.



**Figure 4.** Amplification of different SSRs in agarose gel (3%) separation PCR products for FPL and IVL from *TSHS565* and *CCN51*. Numbered lanes from left to right with the molecular marker (M: Gene ruler 50bp DNA HyperLadder® Bioline) (Lanes 1 and 37), mTc-UniCamp5 (lanes 1-4), mTc-CIR12 (6-9), mTc-UniCamp1 (11-14), mTc-CIR40 (16-19), mTc-UniCamp4 (21-24), mTc-UniCamp3 (26-29), mTc-UniCamp2 (31-34), negative controls (NC) (5, 10, 15, 20, 25, 30, 35).

## Discussion

Secondary compounds in plants are the main problem encountered in DNA extraction and purification; these can damage the DNA and inhibit the action of the enzyme *Taq* polymerase. A major problem with DNA isolation from cocoa and most woody perennials is the contamination by polyphenols and polysaccharides, which interfere with DNA quality and downstream applications. To overcome this problem, we evaluated the influence of the leaf age of the plant material and different methods and additional wash with sorbitol to have achieved an improvement in contaminants removal.

Polyphenols are oxidized during nucleic acids extraction to form covalently quinones bond. Quinones irreversibly bind proteins and nucleic acids forming high molecular weight complexes, whereas polysaccharides co-precipitate with nucleic acids in low ionic strength buffers (Japelaghi, Haddad & Garoosi, 2011); thereby interfering with yield and quality of the isolated nucleic acids. These problems are further increased with plant age and/or unfavorable plant growth conditions.

Adult leaves (stage E) do not present high polyphenols content but have more mucilaginous channel. The presence of polysaccharides was quite evident in DNA extracted due to viscous aspect and glue-like texture; therefore, can coprecipitate DNA after alcohol addition, besides the contamination by polysaccharides makes DNA difficult to pipette and unamplifiable in PCR by inhibition of *Taq* polymerase activity, a result that was also founded.

In addition, stage D is the one that is characterized with a lemon shining green that in this study is recognize like a transitional stage, which is characterized by having an intermediate concentration of chlorophylls, carotenoids, anthocyanins, polyphenols, etc. and therefore, a less quantity interfering substances. Also,

during this transitional period the mucilaginous channels are not completely conformed because the full leaf expansion is yet sketchy carrying it out to have allowed a decreasing in the mucilage compounds. The extraction of stage D- leaf tissue from cacao genotypes results in an increasing yields of high-quality DNA with the PowerPlant® Pro kit protocol, including additional wash with a sorbitol buffer. The buffer was added to the kit with the objective to reduce the inhibitors and this is composed primarily of sorbitol, polyvinyl polypyrrolidone and  $\beta$ -mercaptoethanol (Souza *et al.*, 2012). The sorbitol is used for removing mucilaginous polysaccharides, the reagent  $\beta$ -mercaptoethanol, which acts as a strong reducing agent, disrupts intramolecular disulphide bonds in proteins and polyphenols removal. Water-insoluble PVPP is used for phenolic compounds removal from plant extractions, since they form hydrogen bonds and subsequently, a precipitate is formed and removed from the plant isolation after centrifugation (Japelaghi, Haddad & Garoosi, 2011). Finally, DNA obtained was free of gelatinous substances, which usually coprecipitate with DNA, and it was free of proteins and phenols. The absence of phenolic compounds could be observed by the transparency of the DNA obtained. Cleaning the macerated tissue with the additional sorbitol buffer most of the polysaccharides and other contaminants that would otherwise hamper DNA extraction.

In the evaluated process of PCR conditions for the markers used was appropriate having previous information to reach adequate means of amplification, considering that a low concentration of enzyme ensures the fidelity of DNA amplification and a high concentration of enzyme, which results in amplification of unspecific products (Demeke & Jenkins 2010). Other factors that may modify the fidelity of DNA polymerase enzyme are the presence of 3'-5' exonuclease activity, the natural tendency of the enzyme to insert errors, the ease with which errors can be removed, salt concentration, specifically magnesium the one that showed to be a crucial factor in the activity of the *Taq* polymerase enzyme (data not shown). The reaction components such as DNA template, chelating agents present in the sample (EDTA or citrate), dNTPs and proteins can affect the amount of free magnesium. Its deficiency can inactivate the enzyme and reduce their excess and have allowed an increasing in non-specific binding (Schrader, Schielke, Ellerbroek & Johne, 2012). For these reasons, is essential to determine the optimal salt concentration, which generally is in the range of 1.5 to 3.0 mM.

The additive Bovine Serum Albumin (BSA) improves the quality of amplified products by PCR reaction, as concentrations above 0.8

$\mu\text{g}\cdot\mu\text{l}^{-1}$  of BSA, which results in an increasing of PCR efficiency, since acts as a getter ion and other protein inhibitors for *Taq* polymerase (Schrader *et al.*, 2012). It also prevents the loss of enzyme such as adhesion of enzymes to reaction tubes and tip surfaces, BSA also improves specificity in amplification of regions with secondary structure, a reagent that was added also in this study to stabilize the final reaction and had achieved an increasing in PCR performance through DNA purity templates.

Amplifications of genomic DNA mold involve high quality strands multiplication as PCR methodologies. Which was confirmed by testing amplification through molecular markers type SSRs. It is noteworthy that no significant differences were found in the stage amplification, in accordance to the viability in DNA structure extracted in the types of plants used *in vitro* and field plant and their corresponding amplifications. Even though the performances observed in distinct *Taq* DNA Polymerase used, they seem to have slightly different sensitivities in PCR reaction, making the choice of enzyme in PCR a very important step to see the true prevalence structure of mold extracted.

## Conclusion

This study presents a fast and efficient method for DNA isolation of high quality from cocoa leaves using a reduced amount of plant tissue. PowerPlant® Pro kit protocol was successfully optimized by additional wash with sorbitol buffer. The age of the plant material influences the efficiency and quality of the isolated DNA, being the stage D of developmental cocoa leaves in the field, which presented the best response. For the young leaves of the *in vitro* plants, the adjusted protocol was equally efficient in quality and quantity of DNA. On the other hand, is possible to conclude that the activity of *Taq* DNA Polymerase recombinant enzyme was highly effective compared with other enzymes of different commercial kits. Finally, The DNA obtained is being used for studies of somaclonal variation by SSRs markers.

## Acknowledgments

Special acknowledgement to the Committee for Research Development of the University of Antioquia (CODI) and Compañía Nacional de Chocolates. This work was supported by Colciencias-Administrative Department of Science, Technology and Innovation of Colombia, number 111570048738 and contract 359-2015. Thanks to Harold Suárez-Baron and to Natalia Pabón-Mora for the assistance.

## References

- Ajjah, N.; Hartati, R.; Rubiyo, D. & Sukma, S. (2016) Effective cacao somatic embryo regeneration on kinetin supplemented DKW medium and somaclonal variation assessment using SSRs markers. *Agrivita*, 38(1), 80-92. <http://dx.doi.org/10.17503/agrivita.v38i1.619>
- Bhattacharjee, R.; Kolesnikova-Allen, M.; Aikpokpodion, P.; Taiwo, S. & Ingelbrecht, I. (2004) An improved semiautomated rapid method of extracting genomic DNA for molecular marker analysis in cocoa, *Theobroma cacao* L. *Plant Mol Biol Rep*, 22(4), 435-436. <http://dx.doi.org/10.1007/BF02772686>
- Demeke, T. & Jenkins, G.R. (2010) Influence of DNA extraction methods, PCR inhibitors and quantification methods on real-time PCR assay of biotechnology-derived traits. *Anal Bioanal Chem*, 396(6), 1977-1990. <http://dx.doi.org/10.1007/s00216-009-3150-9>
- Fang, W.; Meinhardt, L.W.; Mischke, S.; Bellato, C.M.; Motilal, L. & Zhang, D. (2014). Accurate determination of genetic identity for a single cacao bean, using molecular markers with a nanofluidic system, ensures cocoa authentication. *J Agric Food Chem*, 62(2), 481-487. <http://dx.doi.org/10.1021/jf404402v>
- Ferreira-Santos, R.M.; Vanderlei, U.; Clément, D.; Pires, J.L.; Matos, E.; Batista, T. & Peres, K. (2014). A protocol for large scale genomic DNA isolation for cacao genetics analysis. *African J Biotechnol*, 13(7), 814-820. <http://dx.doi.org/10.5897/AJB2013.13181>
- Haymes, K.M.; Mischke, S.; Scott, D.L. & Saunders, J.A.J. (2004). Rapid isolation of DNA from chocolate and date palm tree crops. *J Agric Food Chem*, 52(17), 5456-5462. <http://dx.doi.org/10.1021/jf0497962>
- Henao, A.M., de la Hoz, T., Ospina, T., Atehortúa, L. & Urrea, A. (2018). Evaluation of the potential of regeneration of different Colombian and commercial genotypes of cocoa (*Theobroma cacao* L.) via somatic embryogenesis. *Sci Hort*, 229, 148-156. <https://doi.org/10.1016/j.scienta.2017.10.040>
- Japelaghi, R. H.; Haddad, R.; Garoosi, G. A. (2011) Rapid and efficient isolation of high quality nucleic acids from plant tissues rich in polyphenols and polysaccharides. *Mol Biotechnol*, 49(2), 129-137. <https://doi.org/10.1007/s12033-011-9384-8>
- Lanaud, C.; Risterucci, M.; Pieretti, I.; Falque, M.; Bouet, A. & Lagoda, P. (1999). Isolation and characterization of microsatellites in *Theobroma cacao* L. *Mol Ecol*, 8(12), 2141-2143. <https://doi.org/10.1046/j.1365-294x.1999.00802.x>
- Mejia, L.; Guiltinan, M.; Shi, Z.; Landherr, L. & Maximova, S. (2012). Expression of designed antimicrobial peptides in *Theobroma cacao* L. trees reduces leaf necrosis caused by *Phytophthora* spp. In: Small Wonders Pept Dis Control. Chapter 18, pp 379-395. American Chemical Society-ACS (Eds.). ACS Symposium Series, Vol. 1095. <https://doi.org/10.1021/bk-2012-1095.ch018>
- Michiels, A.; Van den, E.W.; Tucker, M.; Van Riet, L. & Van Laere, A. (2003). Extraction of high quality genomic DNA from latex-containing plants. *Anal Biochem*, 315(1), 85-89. [https://doi.org/10.1016/S0003-2697\(02\)00665-6](https://doi.org/10.1016/S0003-2697(02)00665-6)

- Pinto, A.D.; Forte, V.; Guastadisegni, M.C.; Martino, C.; Schena, F.P.; Tantillo, G. (2007). A comparison of DNA extraction methods for food analysis. *Food Control*, 18(1), 76–80. <http://dx.doi.org/10.1016/j.foodcont.2005.08.011>
- Richardson, J.E.; Whitlock, B.A.; Meerow, A.W.; Madriñán, S. (2015) The age of chocolate: a diversification history of *Theobroma* and Malvaceae. *Front Ecol Evol*, 3(120), 1-14. <https://doi.org/10.3389/fevo.2015.00120>
- Santos, E.; Cerqueira-Silva, S.; Mori, G.; Ahnert, D.; Correa, R. & Souza, A. (2012). New polymorphic microsatellite loci for *Theobroma cacao*: isolation and characterization of microsatellites from enriched genomic libraries. *Biol Plant*, 56(4), 789-792. <https://doi.org/10.1007/s10535-012-0134-y>
- Saunders, J.A.; Mischke, S.; Leamy, E.A. & Hemeida, A.A. (2004). Selection of international molecular standards for DNA fingerprinting of *Theobroma cacao*. *Theor Appl Genet*, 110(1), 41–47. <https://doi.org/10.1007/s00122-004-1762-1>
- Schrader, C., Schielke, A., Ellerbroek, L. & Johne, R. (2012). PCR inhibitors – occurrence, properties and removal. *J Appl Microbiol*, 113(5), 1014–1026. <https://doi.org/10.1111/j.1365-2672.2012.05384.x>
- Souza, H.A.; Muller, L.A.; Brandao, R.L. & Lovato, M.B. (2012). Isolation of high quality and polysaccharide-free DNA from leaves of *Dimorphandra mollis* (Leguminosae), a tree from the Brazilian Cerrado. *Genet Mol Res*, 11(1), 756–764. <https://doi.org/10.4238/2012.March.22.6>
- Tiwari, J. K., Chandel, P., Gupta, S., Gopal, J., Singh, B. P. & Bhardwaj, V. (2013). Analysis of genetic stability of in vitro propagated potato microtubers using DNA markers. *Physiol Mol Biol Pla*, 19(4), 587–595. <http://doi.org/10.1007/s12298-013-0190-6>
- Thondaiman, V.; Rajamani, K.; Senthil, N.; Shoba, N. & Joel, A. (2013). Genetic diversity in cocoa (*Theobroma cacao* L.) plus trees in Tamil Nadu by simple sequence repeat (SSR) markers. *African J Biotechnol*, 12(30), 4747-4753. <https://www.ajol.info/index.php/ajb/article/view/134017>
- Urrea, A., Gallego, A. & Atehortúa, L. (2011). Regeneración vía embriogénesis somática de una variedad colombiana élite de *Theobroma cacao* L. *Rev Col Biot*, 13(2), 39–50. <http://www.revistas.unal.edu.co/index.php/biotecnologia/article/view/27916/38317>