

# Quantitative EEG analysis disease during resting and memory task in carriers and non-carriers of PS-1 E280A mutation of familial Alzheimer´s

Análisis del EEG cuantitativo durante tareas de memoria y reposo en portadores y no portadores de la mutación PS-1 E280A de la enfermedad de Alzheimer

JON EDINSON DUQUE-GRAJALES<sup>1</sup>, CARLOS TOBÓN<sup>2</sup>, CLAUDIA P. APONTE-RESTREPO<sup>2</sup>, JOHN F. OCHOA-GÓMEZ<sup>1</sup>, CLAUDIA MUÑOZ-ZAPATA<sup>2</sup>, ALHER M. HERNÁNDEZ VALDIVIESO<sup>1</sup>, YAKEEL T. QUIROZ-ZAPATA<sup>2</sup>, FRANCISCO LOPERA<sup>2</sup>

Forma de citar: Duque-Grajales JE, Tobón C, Aponte-Restrepo CP, Ochoa-Gómez JF, Muñoz-Zapata C, Hernández-Valdivieso AM, et al. Quantitative EEG analysis disease during resting and memory task in carriers and non-carriers of PS-1 E280A mutation of familial Alzheimer´s. Rev CES Med 2014; 28(2): 165-176

## ABSTRACT

**B**ackground: Alzheimer's disease is the most leading cause of dementia in the world; the mutation PS-1 E280A alters the gene of the Presenilin-1 and causes an early onset familial Alzheimer's disease. This mutation has been found in large kindred of Antioquia, Colombia. The objective of this study was to find differences revealed by electroencephalogram between healthy subjects and asymptomatic carriers that can be used as clinical markers of the disease in this population.

**Methods:** EEG was recorded in 15 asymptomatic E280A carriers and 15 healthy non carriers during resting and a memory task using 64 channels amplifier. Two conditions in the memory

<sup>1</sup> Grupo de investigación en Bioinstrumentación e Ingeniería Clínica (GIBIC), Universidad de Antioquia

<sup>2</sup> Grupo de Neurociencias de Antioquia (GNA), Universidad de Antioquia

**Recibido en:** abril 23 de 2014. **Revisado en:** agosto 19 de 2014. **Aceptado en:** septiembre 2 de 2014.

task were analyzed: encoding and retrieval, the process of recording and evocating information, respectively. Power spectrum was calculated in delta (0.5–4.0 Hz), theta (4.0–8.0 Hz), alpha-1 (8.0–10.0 Hz), alpha-2 (10.0–13.0 Hz), beta (13.0–25.0 Hz) and gamma (25.0–50 Hz) frequency bands for four regions of interest. Changes were evaluated in different conditions by ANOVA analysis.

**Results:** In resting condition a significant decrease was found in theta ( $p=0.0001$ ) and an increase in alpha-2 frequencies ( $p=0.037$ ) in carriers compare with controls. During encoding of the memory task theta was significantly lower in carriers compared with controls ( $p=0.008$ ) and comparing resting versus retrieval process for each group, there was more theta synchronization in carriers.

**Conclusion:** Early changes in theta frequencies were observed in the EEG recordings, it could be use as clinical markers in this population. Also it seems carriers activate additional cortical regions in order to conserve successful cognitive functions before clinical impairment.

## KEY WORDS

Alzheimer's Disease  
Quantitative EEG  
PS-1 E280A mutation  
Theta frequency band  
Power spectrum  
Memory process

## RESUMEN

**Introducción:** la enfermedad de Alzheimer es la principal causa de demencia en el mundo; la mutación PS-1 E280A altera el gen presenilina-1 y causa una variante familiar de la enfermedad

que se caracteriza por una aparición temprana. La mutación se ha descubierto en un grupo de familias de Antioquia, Colombia. El objetivo de este estudio fue encontrar diferencias, a partir de registros electroencefalográficos de personas portadores de la mutación en una etapa asintomática y sujetos sanos para evaluar si pueden ser utilizadas como un marcador temprano de la enfermedad en la población portadora de la mutación.

**Metodología:** se realizaron registros EEG en 15 portadores asintomáticos de la mutación E280A y 15 personas sanas no portadoras durante una tarea de memoria y en reposo utilizando un amplificador de 64 canales. En la tarea de memoria se evaluaron dos condiciones: codificación y evocación; el proceso de memorizar y recuperar la información, respectivamente. La potencia espectral fue calculada en las bandas de frecuencia delta (0,5–4,0 Hz), teta (4,0–8,0 Hz), alfa-1 (8,0–10,0 Hz), alfa-2 (10,0–13,0 Hz), beta (13,0–25,0 Hz) y gamma (25,0–50 Hz) para cuatro regiones de interés. Los cambios del espectro fueron evaluados por análisis de varianza ANOVA.

**Resultados:** bajo la condición de reposo se encontró una disminución importante en la potencia de la banda teta ( $p=0,0001$ ) y un incremento en la banda alfa-2 ( $p=0,037$ ) en portadores comparados con controles. Durante la tarea de codificación, los portadores mostraron una disminución significativa en la banda teta ( $p=0,008$ ). Al comparar reposo contra memoria de evocación se encontró una mayor sincronización en teta en los portadores de la mutación.

**Conclusión:** se encontraron cambios tempranos de la potencia en la banda teta que pueden ser utilizados como un marcador clínico de la enfermedad en esta población. Una hipótesis adicional basada en los resultados es que los portadores necesitan activar regiones corticales adicionales para conservar las funciones cognitivas antes de empezar un deterioro clínico.

## **PALABRAS CLAVES**

*Enfermedad de Alzheimer*

*EEG cuantitativo*

*Mutación E280A*

*Banda de frecuencia teta*

*Espectro de potencia*

*Procesamiento de memoria*

## **INTRODUCTION**

Alzheimer's disease (AD) is the most prevalent cause of dementia, a neurodegenerative condition, that generally onset after the age of 65 (1); however there are some mutations that induce the onset of the neurocognitive symptoms under this age (2). Until now, three genes have been related to familial Alzheimer's disease: the Presenilin-1 (PS-1) gene, the amyloid precursor protein (APP), and the Presenilin-2 (PS-2) (3,4)

In Colombia, there is a large family group with a mutation in the PS-1 E280A gene, which codifies Presenilin-1, a co-factor of  $\gamma$ -secretase involved in the production of  $\beta$ -amyloid (5). This mutation has an autosomal dominant inheritance and induces symptoms from the age of 44 years (mild cognitive impairment onset) and dementia at a median age of 46.8 years (6–9).

Electroencephalography (EEG) might be a powerful and simple tool for the identification of predictive markers of cognitive deterioration, since it can show the rapid and multistage cognitive functions that are affected early in neurodegenerative processes (10).

The main changes in resting EEG recording of sporadic Alzheimer's disease are: slowing of the dominant occipital rhythm (11), early modifications in beta and theta bands and late modifications in alpha and delta bands (12–14). During memory process, one of the earliest and most

sensitive EEG changes is the normal synchronization in theta frequencies despite of the increase in its relative power (15). EEG records during memory task in sporadic Alzheimer's disease and mild cognitive impairment patients have demonstrated a lack of theta enhancement in the processing of the cognitive stimulus (16–19), demonstrating affectation of the cholinergic system because theta band has been implicated in optimal working memory and attentional process (20).

Differences in synchronization of alpha and beta bands also have been reported during memory encoding revealed by synchronization likelihood (a measure similar to coherence but sensible to linear and nonlinear interactions) (21). Synchronization likelihood decreased in Alzheimer's disease subjects when they are compared to healthy subjects with subjective memory complaints and it is related to semantic memory dysfunction (22).

EEG studies in carriers of mutations have reported important differences when are compared to non-carriers. EEG recordings in resting of ApoE4 carriers, a genetic risk factor for late-onset sporadic AD, have shown decrease in alpha and an increase in delta and theta power (23,24). In an Event Related Potential study (ERP) of semantic processing in asymptomatic subjects with E280A mutation, lower amplitudes and a different topography of N400 potential were observed compared with non-carriers, especially in right inferior-temporal, medial cingulate, left hippocampus and parahippocampus (25).

Another ERP study in the same population showed less positivity in frontal regions and more positivity in occipital regions, during a recognition memory task in asymptomatic carriers compared to controls, which activated frontal areas (26). These differences were more pronounced during the 200-300 msec period.

Finally, a recent quantitative EEG study during resting condition in probable Alzheimer's

disease and asymptomatic E280A carriers found alteration in beta frequency and modifications in front-temporal regions of the spectral parameters before clinical sign of cognitive impairment (3).

In this study we extend the previous research in E280A carriers analyzing the EEG records during resting and a memory task in asymptomatic subjects. The objective was to find differences revealed by EEG between healthy subjects and asymptomatic carriers that can be used as clinical markers in this population.

## MATERIALS AND METHODS

The subjects were members of the E280A mutation Colombian kindred. Informed consent for

participation was obtained from all subjects according to a general protocol approved by the Human Subjects Committee of *Sede de Investigación Universitaria* of *University of Antioquia*, in Medellin, Colombia. We selected 15 asymptomatic E280A mutation Alzheimer's disease carriers (ACr) and 15 healthy non carriers subjects (control). Table 1 shows the mean values of demographic and clinical characteristic for these groups as well as the results of a *T* test for each of the variables.

EEG data were recorded with a Neuroscan unit amplifier (Neuroscan Medical System, Neurosoft Inc. Sterling, VA, USA) (0.1 ± 200Hz band pass) from 64 electrodes positioned according to the international 10-10 system with midline reference (subsequently recomputed to common average) at a sample rate of 1000 Hz. A simultaneous electro-oculogram (0.1 ± 100 Hz band pass) was also recorded. All data were digitized in a continuous recording mode.

**Table 1.** Demographic and neuropsychological data of ACr and control subjects

	ACr	Control	T test
N	15	15	
Age (years)	28.8 ± 5.1	31.5 ± 5.8	T= -1.04, df= 28 p< 0.3066
Gender (M/F)	5/10	6/9	χ <sup>2</sup> = 0.1435, df= 1 p< 0.7048
MMSE	29.6 ± 0.6	29.5 ± 0.9	T= -0.2190, df= 28 p< 0.8283
Education level (ys)	11.9 ± 3.5	11.2 ± 3.4	T= 0.7759, df= 28 p< 0.4443

MMSE: mini-mental state examination; F: female; M: male; df: degree of freedom; χ<sup>2</sup> Chi-squared test

Data were registered during an ERP experiment where participants performed a recognition memory task using color pictures of concrete and namable objects: 50 new stimuli were presented during the study phase, and 100 stimuli (50% old) were presented during the test phase. Each trial began with a 1,000ms fixation character ("+") prior to the presentation of the stimuli. Study stimuli were then presented for 2,000ms followed by the question, "Do you like this

item?" Subjects were then prompted to button press to signify their like/dislike judgment and to remember the items for a subsequent memory test. Test stimuli were presented for 1,500ms, followed by the question, "Is this item old or new?" Subjects were then prompted to button press to signify their old/new judgment. Subjects were asked to hold their responses until the question appeared immediately after stimuli presentation to minimize response-related ERP artifact (26).

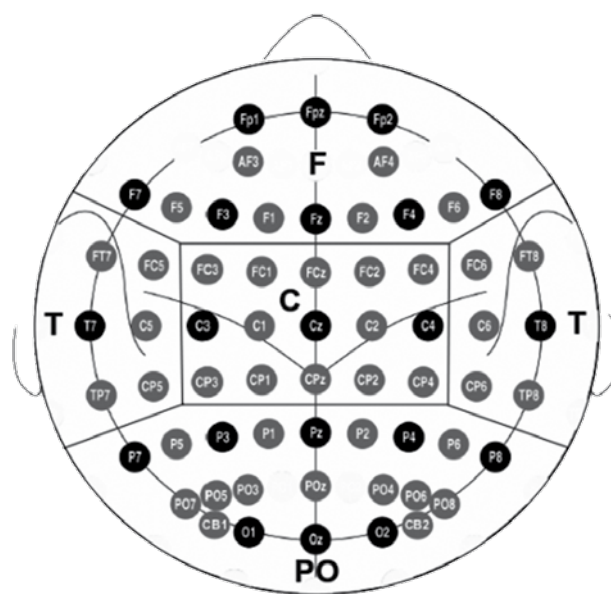
Other recordings were obtained with subjects resting comfortably with their eyes closed during five minutes. Vigilance was continuously monitored in order to avoid drowsiness. For the analysis of the memory EEG data, three conditions were selected: encoding, hits and correct rejection. Showing the images for the first time was defined as the encoding condition and it is the process where the participant has to record the new information. Hits were defined as the condition where subjects selected an image as repeated correctly and correct rejection was the condition where subjects selected an image as novel correctly. Both conditions hits and correct rejection are part of retrieval memory process and here the participant has to evocate the learned information. Epochs were selected 200ms before the condition event and 1800ms after. The resting data were segmented in epochs of 2s (2000 samples).

The EEG epochs with ocular, muscular and other types of artifact were removed by a computerized automatic procedure based on linear trend, joint probability and kurtosis approach (27). Then, we used independent component analysis (ICA) approach to identify eye blink, muscle and electrical sources visually detected by an expert (C.T.). These sources were removed of the EEG data. Finally, we repeated the automatic procedure in the cleaned EEG ICA-based data to remove the residual epochs with artifacts.

For quantitative analysis, the fast Fourier transform using the Welch approach was computed for 20 artifact-free epochs for each condition (rest, encoding, hits and correct rejection). Relative power was calculated in six EEG bands: delta (0.5–4.0 Hz), theta (4.0–8.0 Hz), alpha-1 (8.0–10.0 Hz), alpha-2 (10.0–13.0 Hz), beta (13.0–25.0 Hz) and gamma (25.0–50 Hz). The power measures were normalized by dividing the value in one band with the sum of the power in all bands.

As a result, we had a matrix of 64x6x20 with values of power for each subject, where 64 was the

number of channels, 6 the number of bands and 20 the number of epochs selected. Then, four regions of interest (ROI's) were computed: *frontal -F-*: (FP1, FPZ, FP2, AF3, AF4, F7, F5, F3, F1, FZ, F2, F4, F6, F8); *temporal -T-*: (FT7, FC5, FC6, FT8, T7, C5, C6, T8, TP7, CP5, CP6, TP8); *central -C-*: (FC3, FC1, FCZ, FC2, FC4, C3, C1, CZ, C2, C4, CP3, CP1, CPZ, CP2, CP4) and *parieto-occipital -PO-*: (P7, P5, P3, P1, PZ, P2, P4, P6, P8, PO7, PO5, P03, POZ, PO4, PO6, PO8, CB1, O1, OZ, O2, CB2) (figure 1). The original 64x6x20 matrix was reduced to 4x6x20 as the power mean between the channels of the ROI's for each band. Finally, we averaged the power in the 20 epochs.



**Figure 1.** Schematic picture of the 64 electrodes system and the ROI's generated. F: frontal; T: temporal; C: central; PO: parieto-occipital

The power values were compared by means of ANOVA analysis. The main working hypothesis of the present study was that the power spectrum in ACr is abnormal compared with control. To test this hypothesis the ANOVA had the factors subjects (ACr and control), ROI's (F, C, T, and PO) and the power spectrum for a band in one condition as independent variable. Also, we compare conditions for each group by means of



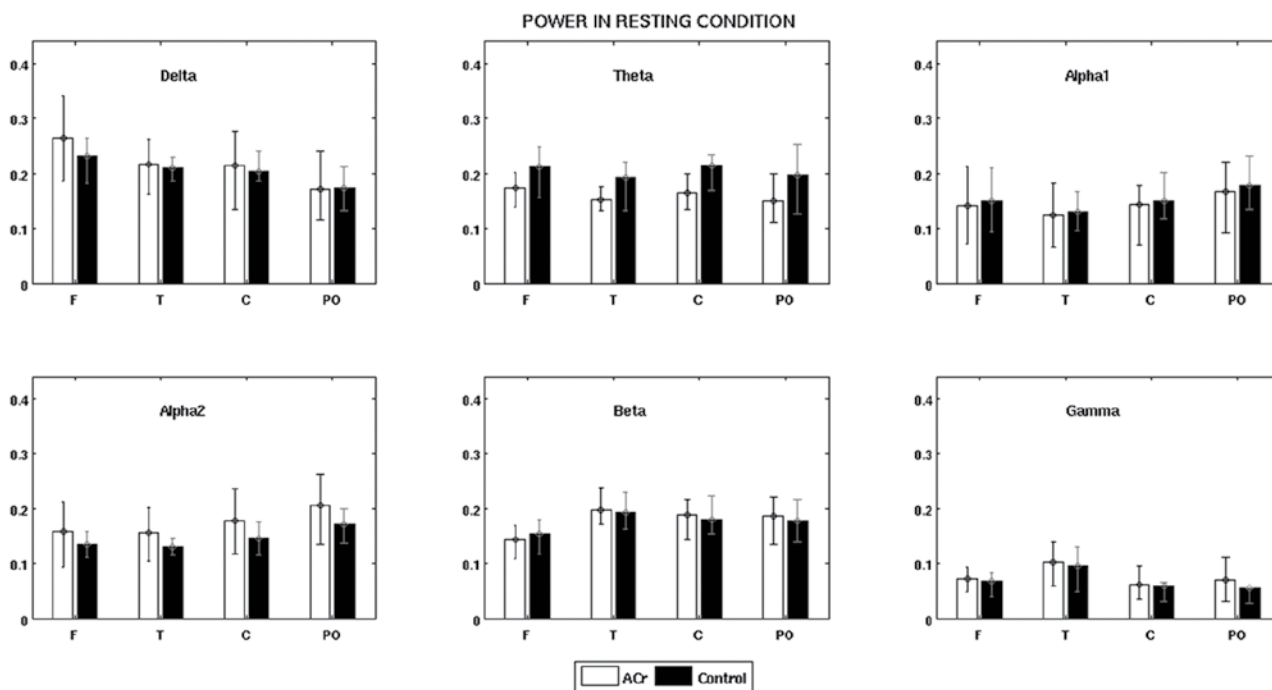
ANOVA with the factors condition (resting, encoding, hits and correct rejection), ROI's (F, C, T, and PO) and the power spectrum for a band in one group as independent variable. The statistical analysis was carried out in Matlab®. Statistical significance was defined as the *p* values lower than 0.05.

## RESULTS

Neither demographic information (age, gender and education level) nor neuropsychological examination differences were found (Table 1). No differences were found in the score of the

memory task between ACr and control groups as were expected because the asymptomatic condition of the population.

In resting condition the power showed a decrease in the theta and alpha-1 bands frequencies for ACr versus control in all ROI's. This decrease was significant for theta ( $F_{1,112}=16.52$ ,  $MSe=0.07131$ ;  $P=0.0001$ ) but not for alpha-1. Also we found a power increase in ACr versus Control for delta and alpha-2 in all ROI's but just the last band was significant ( $F_{1,112}=4.44$ ,  $MSe=0.0165$ ;  $P=0.0373$ ) (figure 2). In beta and gamma were not difference found.

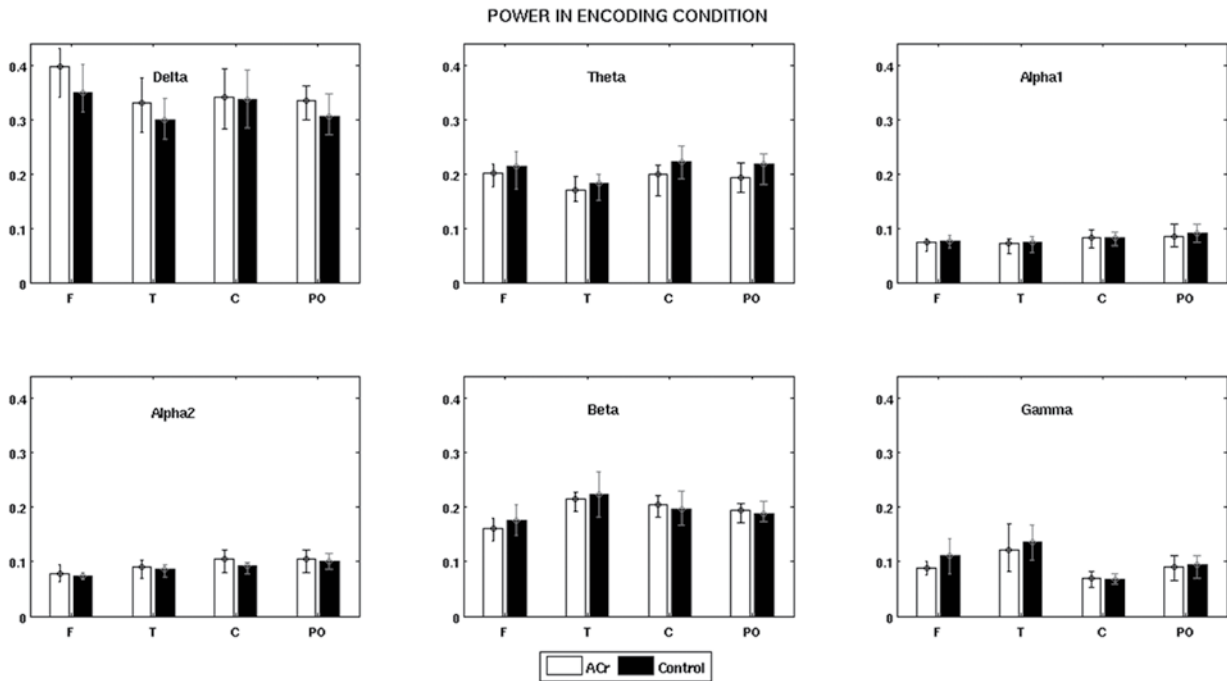


**Figure 2.** Power spectrum in resting condition for ACr and control group.

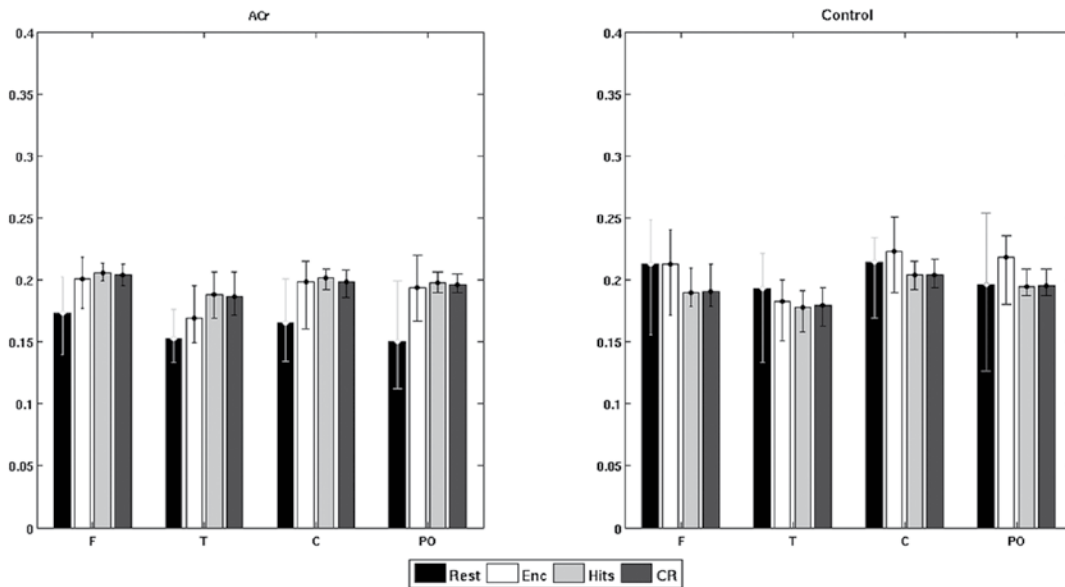
The power measures were normalized. The vertical line in the bars represents the 25<sup>th</sup> percentile, mean and 75<sup>th</sup> percentile. F: frontal; T: temporal; C: central; PO: parieto-occipital

During encoding, theta frequencies were significantly lower in ACr compared with controls ( $F_{1,112}=7.23$ ,  $MSe=0,01915$ ;  $P=0,0083$ ) for

all ROIs (figure 3). No differences were found in other bands, neither for hits and correct rejection.



**Figure 3.** Power spectrum in encoding condition for ACr and Control group. The power measures were normalized. The vertical line in the bars represents the 25<sup>th</sup> percentile, mean and 75<sup>th</sup> percentile. F: frontal; T: temporal; C: central; PO: parieto-occipital



**Figure 4.** Power spectrum for theta band in resting and memory conditions for ACr and control group. The power measures were normalized. The vertical line in the bars represents the 25<sup>th</sup> percentile, mean and 75<sup>th</sup> percentile. F: frontal; T: temporal; C: central; PO: parieto-occipital

Comparing resting and memory conditions, differences in theta band were found in ACr group for resting versus encoding ( $F_{1,112}=21.73$ ,  $MSe=0.0407$ ;  $P=6.36 \times 10^{-6}$ ), resting versus hits ( $F_{1,112}=52.13$ ,  $MSe=0.0654$ ;  $P=1.98 \times 10^{-11}$ ) and resting versus correct rejection ( $F_{1,112}=46.38$ ,  $MSe=0.0589$ ;  $P=1.86 \times 10^{-10}$ ) for all ROI's. In control group no significant differences were found for resting versus memory. Figure 4 show the magnitude of these powers in both groups.

## DISCUSSION

In the present study we analyzed the pattern of the EEG during resting condition and memory process revealed by power spectrum. As we expected, comparing the changes of power from resting to encoding there were a decrease of high frequencies (alpha-1, alpha-2, beta and gamma) and an increase in low frequencies (delta and theta) for both groups ACr and control. EEG in healthy people during memory process has changes in theta and alpha activity; theta synchronizes with an increased in task demands (theta power increases), whereas alpha desynchronizes (alpha power decreases) (28,29).

The activity of theta has been reported in episodic long-term and working memory; its oscillations seem to be responsible for the integration of top-down and bottom-up information during the encoding phase, while alpha desynchronization correlates with semantic memory performance (30,31)

This has been found specially in working memory studies, but theta is also associated with attentional processing, spatial navigation and long-term memory processes (18). During memory process, we also found a decrease in synchronization for alpha frequencies in both, ACr and control, as it has been reported in literature (30,32).

Despite of power in theta frequencies was lower in ACr than control for resting and encoding, if

we compare resting versus memory conditions (encoding, hits and correct rejection) for each group, there was more synchronization for all ROI's in ACr. It seems as though ACr subjects create different connectivity pathways in order to get a good cognitive function (compensation hypothesis). This hypothesis has been made through several Alzheimer's disease studies specially in subjects at risk of developing the disease because of mutations and this could be observed in early stages of the disease and in preclinical stages (10,26,33,34) like in this study.

There is evidence of neuro-pathological changes in carriers of E280A years before onset of symptoms. Functional imaging during memory task in ACr subjects from 18-26 years old showed greater activation in hippocampal and para-hippocampal regions and less activation in precuneus and posterior cingulate regions (35). And later at age 28,3 years, there is evidence of accumulation of amyloid-beta ( $A\beta$ ) in a florbetapir binding PET study in posterior cingulate, precuneus, parietotemporal, frontal, and basal ganglia regions (36). This early changes could cause a different pattern in the connectivity process and therefore in the electrical pattern registered in EEG.

Interestingly, we observed a decreased in theta power frequency during resting condition and memory process at preclinical stages of the disease. A similar study in the same population with older asymptomatic carriers (at the age of 39. 9 years) and in probable Alzheimer disease (carriers with mild symptoms) showed a significant increase of theta during resting condition in probable Alzheimer's disease compared with controls (3). A similar finding had been reported in sporadic Alzheimer's disease (12).

It seems at very early state of the disease (at age of 28. 8 years) there is a decrease in theta band and then it starts to increase at the onset of the disease. It could be explained by the  $A\beta$  accumulation pattern that begins at age of 28. 3 years. As we said before, there are changes



in the activation of brain areas during memory processing in carriers previous to the accumulation of A $\beta$  and these could be reflected in the decrease of power in theta frequencies revealed by EEG.

As in previous studies in asymptomatic carriers of E280A mutation, we found differences compared with controls; there is a decrease in EEG activity in a basal state and affectation of power during memory process mainly in theta frequencies. It seems as though carriers need more neural activation in order to have a good neurocognitive function as it was revealed by neuropsychological tests.

## **CONCLUSION**

The EEG recordings revealed early changes mainly in theta frequencies in E280A carriers that can be used as a clinical marker in this population. Also, it seems these subjects activate additional cortical regions in order to conserve successful cognitive functions before clinical impairment; however, more studies are needed in this population in order to clarify the structural and functional difference that these subjects have and that were revealed in the EEG recording but not in the clinical evaluation.

## **ACKNOWLEDGMENT**

Authors thanks to Departamento Administrativo de Ciencia, Tecnología e Innovación – Colciencias – for the financial support to the Project “Marcadores neurofisiológicos del inicio de la disfunción cerebral en la etapa pre-clínica de la enfermedad de Alzheimer” identified with the code 1115-519-29028 and to *Vicerrectoría de Investigación* of *Universidad de Antioquia* (CODI) for financial support to the Project “Identificación de marcadores preclínicos de la mutación E280A de la enfermedad de Alzheimer a partir de medi-

das de conectividad en EEG” identified with the code PRG14-1-02.

### **Conflict of interest**

There is not conflict of interest in this study.

## **REFERENCES**

1. López OL, Dekosky ST. Clinical symptoms in Alzheimer’s disease. *Handb Clin Neurol.* 2008; 89:207-16.
2. López OL, DeKosky ST. Neuropathology of Alzheimer’s disease and mild cognitive impairment. *Rev Neurol.* 16 de julio de 2003; 37 (2):155-63.
3. Rodriguez R, Lopera F, Alvarez A, Fernandez Y, Galan L, Quiroz Y, et al. Spectral Analysis of EEG in Familial Alzheimer’s Disease with E280A Presenilin-1 Mutation Gene. *Int J Alzheimers Dis.* 2014; 2014:180741.
4. Rogaeva E, Kawarai T, George-Hyslop PS. Genetic complexity of Alzheimer’s disease: successes and challenges. *J Alzheimers Dis JAD.* 2006; 9(3 Suppl):381-7.
5. Van Vickle GD, Esh CL, Kokjohn TA, Patton RL, Kalback WM, Luehrs DC, et al. Presenilin-1 280Glu-->Ala mutation alters C-terminal APP processing yielding longer abeta peptides: implications for Alzheimer’s disease. *Mol Med Camb Mass.* 2008; 14 (3-4):184-94.
6. Duque-Castaño A, Roldán MI, Arango-Viana JC, Arcos-Burgos M, Cubillo H, Lopera F. Neuropathological findings in early-onset Alzheimer’s disease (E280a-PS1 mutation). *Rev Neurol.* 1999; 29 (1):1-6.
7. Lopera F, Ardilla A, Martínez A, Madrigal L, Arango-Viana JC, Lemere CA, et al. Clinical features of early-onset Alzheimer disease in



- a large kindred with an E280A presenilin-1 mutation. *JAMA J Am Med Assoc.* 1997; 277 (10):793-9.
8. Acosta-Baena N, Sepulveda-Falla D, Lopera-Gómez CM, Jaramillo-Elorza MC, Moreno S, Aguirre-Acevedo DC, et al. Pre-dementia clinical stages in presenilin 1 E280A familial early-onset Alzheimer's disease: A retrospective cohort study. *Lancet Neurol.* 2011; 10 (3):213-20.
  9. Ardila A, Lopera F, Rosselli M, Moreno S, Madrigal L, Arango-Lasprilla JC, et al. Neuropsychological profile of a large kindred with familial Alzheimer's disease caused by the E280A single presenilin-1 mutation. *Arch Clin Neuropsychol Off J Natl Acad Neuropsychol.* 2000; 15 (6):515-28.
  10. Micanovic C, Pal S. The diagnostic utility of EEG in early-onset dementia: a systematic review of the literature with narrative analysis. *J Neural Transm Vienna Austria* 1996. 2014; 121(1):59-69.
  11. Kwak YT. Quantitative EEG findings in different stages of Alzheimer's disease. *J Clin Neurophysiol Off Publ Am Electroencephalogr Soc.* 2006; 23 (5):456-61.
  12. Baker M, Akrofi K, Schiffer R, Boyle MWO. EEG Patterns in Mild Cognitive Impairment (MCI) Patients. *Open Neuroimaging J.* 2008; 2:52-5.
  13. Jeong J. EEG dynamics in patients with Alzheimer's disease. *Clin Neurophysiol.* 2004; 115 (7):1490-505.
  14. Dauwels J, Vialatte F, Cichocki A. Diagnosis of Alzheimer's disease from EEG signals: where are we standing? *Curr Alzheimer Res.* 2010; 7(6):487-505.
  15. Kim J-S, Lee S-H, Park G, Kim S, Bae S-M, Kim D-W, et al. Clinical implications of quantitative electroencephalography and current source density in patients with Alzheimer's disease. *Brain Topogr.* 2012; 25(4):461-74.
  16. Başar E, Güntekin B, Tülay E, Yener GG. Evoked and event related coherence of Alzheimer patients manifest differentiation of sensory-cognitive networks. *Brain Res.* 2010; 1357:79-90.
  17. Güntekin B, Saatçi E, Yener G. Decrease of evoked delta, theta and alpha coherences in Alzheimer patients during a visual oddball paradigm. *Brain Res.* 2008; 1235:109-16.
  18. Karrasch M, Laine M, Rinne JO, Rapinoja P, Sinervä E, Krause CM. Brain oscillatory responses to an auditory-verbal working memory task in mild cognitive impairment and Alzheimer's disease. *Int J Psychophysiol Off J Int Organ Psychophysiol.* 2006; 59 (2):168-78.
  19. Yener GG, Güntekin B, Oniz A, Başar E. Increased frontal phase-locking of event-related theta oscillations in Alzheimer patients treated with cholinesterase inhibitors. *Int J Psychophysiol Off J Int Organ Psychophysiol.* 2007; 64 (1):46-52.
  20. Caravaglios G, Castro G, Costanzo E, Di Maria G, Mancuso D, Muscoso EG.  $\theta$  power responses in mild Alzheimer's disease during an auditory oddball paradigm: lack of theta enhancement during stimulus processing. *J Neural Transm Vienna Austria* 1996. 2010; 117 (10):1195-208.
  21. Stam CJ, van Dijk BW. Synchronization likelihood: an unbiased measure of generalized synchronization in multivariate data sets. *Phys Nonlinear Phenom.* 2002; 163 (3-4):236-51.
  22. Pijnenburg YAL, vd Made Y, van Cappellen van Walsum AM, Knol DL, Scheltens P, Stam CJ. EEG synchronization likelihood in mild cognitive impairment and Alzheimer's disease during a working memory task. *Clin Neurophysiol.* 2004; 115 (6):1332-9.

23. Ponomareva NV, Korovaitseva GI, Rogaev EI. EEG alterations in non-demented individuals related to apolipoprotein E genotype and to risk of Alzheimer disease. *Neurobiol Aging*. 2008; 29 (6):819-27.
24. De Waal H, Stam CJ, de Haan W, van Straaten ECW, Blankenstein MA, Scheltens P, et al. Alzheimer's disease patients not carrying the apolipoprotein E  $\epsilon 4$  allele show more severe slowing of oscillatory brain activity. *Neurobiol Aging*. 2013; 34 (9):2158-63.
25. Bobes MA, García YF, Lopera F, Quiroz YT, Galán L, Vega M, et al. ERP generator anomalies in presymptomatic carriers of the Alzheimer's disease E280A PS-1 mutation. *Hum Brain Mapp*. 2010; 31 (2):247-65.
26. Quiroz YT, Ally BA, Celone K, McKeever J, Ruiz-Rizzo AL, Lopera F, et al. Event-related potential markers of brain changes in preclinical familial Alzheimer disease. *Neurology*. 2011; 77 (5):469-75.
27. Delorme A, Sejnowski T, Makeig S. Enhanced detection of artifacts in EEG data using higher-order statistics and independent component analysis. *NeuroImage*. 2007; 34 (4):1443-9.
28. Klimesch W, Freunberger R, Sauseng P. Oscillatory mechanisms of process binding in memory. *Neurosci Biobehav Rev*. 2010; 34(7):1002-14.
29. Hogan MJ, Swanwick GRJ, Kaiser J, Rowan M, Lawlor B. Memory-related EEG power and coherence reductions in mild Alzheimer's disease. *Int J Psychophysiol Off J Int Organ Psychophysiol*. 2003; 49 (2):147-63.
30. Klimesch W. EEG alpha and theta oscillations reflect cognitive and memory performance: a review and analysis. *Brain Res Rev*. 1999; 29 (2-3):169-95.
31. Sauseng P, Griesmayr B, Freunberger R, Klimesch W. Control mechanisms in working memory: a possible function of EEG theta oscillations. *Neurosci Biobehav Rev*. 2010; 34 (7):1015-22.
32. Başar E, Güntekin B. A short review of alpha activity in cognitive processes and in cognitive impairment. *Int J Psychophysiol*. 2012; 86(1):25-38.
33. Dubovik S, Bouzerda-Wahlen A, Nahum L, Gold G, Schnider A, Guggisberg AG. Adaptive reorganization of cortical networks in Alzheimer's disease. *Clin Neurophysiol Off J Int Fed Clin Neurophysiol*. 2013; 12 (1):35-43.
34. Wallace TL, Bertrand D. Importance of the nicotinic acetylcholine receptor system in the prefrontal cortex. *Biochem Pharmacol*. 2013; 85(12):1713-20.
35. Reiman EM, Quiroz YT, Fleisher AS, Chen K, Velez-Pardo C, Jimenez-Del-Rio M, et al. Brain imaging and fluid biomarker analysis in young adults at genetic risk for autosomal dominant Alzheimer's disease in the presenilin 1 E280A kindred: A case-control study. *Lancet Neurol*. 2012; 11 (12):1048-56.
36. Fleisher AS, Chen K, Quiroz YT, Jakimovich LJ, Gomez MG, Langois CM, et al. Florbetapir PET analysis of amyloid- $\beta$  deposition in the presenilin 1 E280A autosomal dominant Alzheimer's disease kindred: a cross-sectional study. *Lancet Neurol*. 2012; 11 (12):1057-65.



