

## ARTICLE INFO

Received : April 30, 2022

Revised : December 02, 2022

Accepted : March 20, 2023

CT&amp;F - Ciencia, Tecnología y Futuro Vol 12, Num 2 December 2022, pages 39 - 47

DOI: <https://doi.org/10.29047/01225383.623>

# POTENTIAL AND ECONOMIC FEASIBILITY OF A WIND POWER PLANT IN CIUDAD JUÁREZ, MEXICO

## POTENCIAL Y VIABILIDAD ECONOMICA DE UNA PLANTA DE ENERGIA EOLICA EN CIUDAD JUAREZ, MEXICO

Yashar Aryanfar<sup>1</sup>, Jorge Luis García Alcaraz<sup>2\*</sup>, Julio Blanco Fernandez<sup>3</sup>, Liliana Avelar Sosa<sup>2</sup>

### ABSTRACT

This study investigated the wind energy potential of Ciudad Juárez (Chihuahua, Mexico) for an entire year. The viability of using three small-scale wind turbine models, including S-343, Bergey BWC Excel, and AOC 15/50, in Ciudad Juárez, situated in the northern Mexican state of Chihuahua in Mexico, was studied in the first stage using RETScreen software. The performance of these three turbine models was subjected to a sensitivity analysis in the next stage of the study, using the three economic scenarios defined, assuming a 7% inflation rate, 9% discount rate, 7% fuel cost escalation rate, and 20-year project duration. Finally, the economic circumstances under which these turbines operate in Ciudad Juárez are discussed. The findings suggest that the study site is not economically appropriate and not even for installing small wind turbines. Finally, it was suggested that the viability of adopting alternative renewable energy systems, such as solar and hybrid systems (photovoltaic wind), should be examined in future studies in Ciudad Juárez.

### RESUMEN

Este estudio investigó el potencial de energía eólica de Ciudad Juárez (Chihuahua, México) durante todo un año. La viabilidad de emplear tres modelos de turbinas eólicas a pequeña escala, incluyendo el S-343, Bergey BWC Excel y AOC 15/50, en Ciudad Juárez, ubicado en el estado norteño mexicano de Chihuahua en México, se estudia en la primera etapa utilizando el software RETScreen. El rendimiento de estos tres modelos de turbinas se sometió a un análisis de sensibilidad en la siguiente etapa de estudio utilizando los tres escenarios económicos definidos, asumiendo una tasa de inflación del 7%, una tasa de descuento del 9%, una tasa de escalada del costo del combustible del 7% y una duración del proyecto de 20 años. Finalmente, se discuten económicamente las circunstancias bajo las cuales estas turbinas operan en Ciudad Juárez. Los resultados indican que el sitio de estudio no es económicamente apropiado, ni siquiera para la instalación de pequeñas turbinas eólicas específicas. Finalmente, se sugirió que la viabilidad de adoptar sistemas alternativos de energía renovable, como los sistemas solares e híbridos (energía eólica fotovoltaica), se examine en el próximo estudio en Ciudad Juárez.

### KEYWORDS / PALABRAS CLAVE

Mexico | wind | RETScreen |  
Electricity | Energy | Ciudad Juárez  
Mexico | Viento | RETScreen |  
Electricidad | Energía | Ciudad Juárez

### AFFILIATION

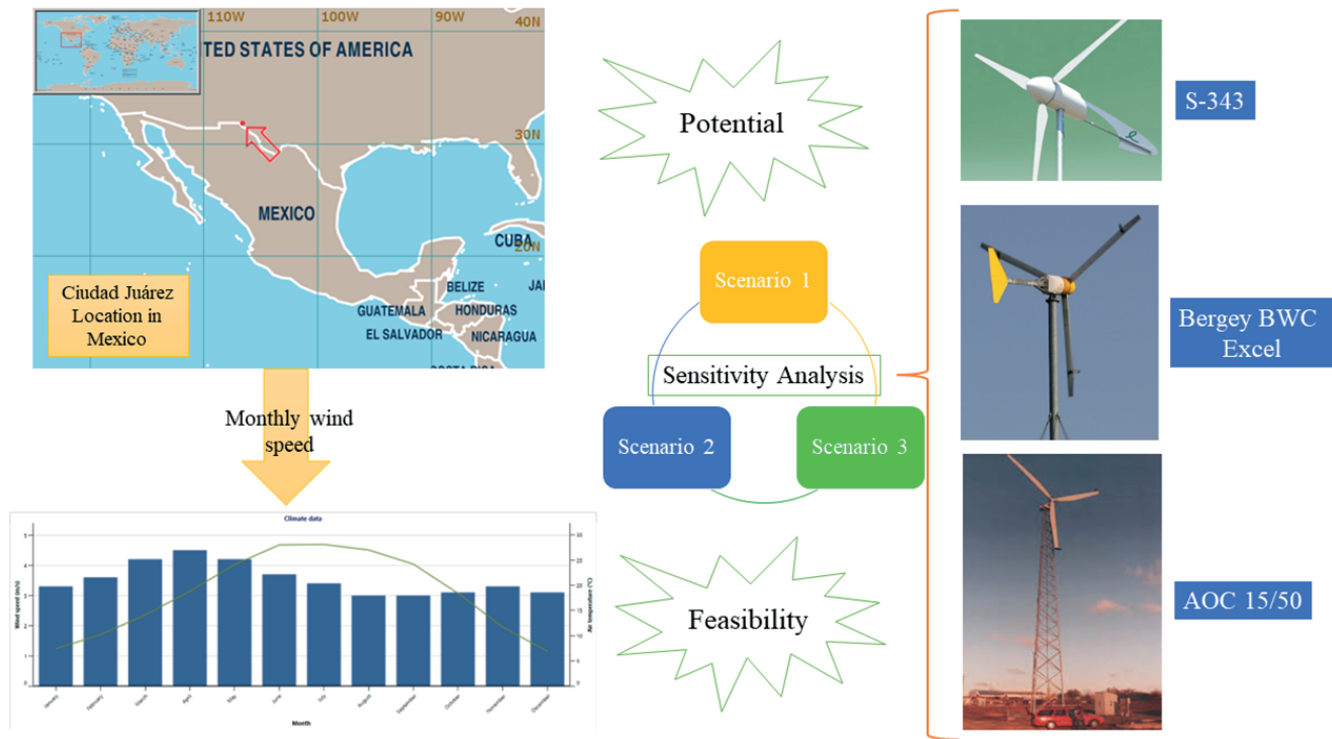
<sup>1</sup>Department of Electric Engineering and Computation. Autonomous University of Ciudad Juárez. Av. Del Charro 450 Norte. Col. Partido Romero. Ciudad Juárez 32310, Chihuahua, México.

<sup>2</sup>Department of Industrial Engineering and Manufacturing, Autonomous University of Ciudad Juárez. Av. Del Charro 450 Norte. Col. Partido Romero. Ciudad Juárez 32310, Chihuahua, México.

<sup>3</sup>Department of Mechanical Engineering, University of La Rioja. C/ San José de Calasanz 31, Logroño 26004, Logroño, La Rioja, Spain.

\*email: [jorge.garcia@uacj.mx](mailto:jorge.garcia@uacj.mx)

## GRAPHICAL ABSTRACT



### HIGHLIGHTS:

- Wind energy generation has no potential at Ciudad Juárez (Mexico)
- The installation of small wind turbines in Ciudad Juárez is not economically feasible.
- The economic scenarios simulated for the wind suggest long payback periods.

## 1. INTRODUCTION

The use of renewable energy to replace fossil fuels is a viable strategy for addressing environmental issues arising from rising energy demand. Renewable energy resources have piqued the interest of the power generation industry in recent years owing to their lack of pollution and the capacity to gather endless amounts of energy. According to the United Nations Framework Convention on Climate Change (UNFCCC), all human activities that change the composition of the atmosphere and impact meteorological variables, such as temperature, rainfall, cloud cover, and air currents, are to be blamed for climate change. One of the primary contributors to global warming that endangers people is human activity, which uses energy from fossil fuels [1].

Wind energy is an important renewable energy source that offers clean and limitless energy. Numerous data are available on the presence and behavior of wind at high altitudes worldwide, but more data are needed on the presence and speed of wind in metropolitan areas at low altitudes [2]. In Mexico, a portion of the subsidy for fossil fuels, gas, and electricity was abolished in early 2017, leading to an increase of up to 20% for fossil fuels and gas and up to 4.5% for electricity. Although this harmed most Mexican economies, it may also have a positive impact on the growth of renewable energy projects [3]. The Mexican government has committed to including

wind energy in its energy programme [4]. According to the Mexican Wind Energy Association (Asociación Mexicana de Energía Eólica, AMDEE), Mexico has 46 wind farms, with a total installed capacity of 4005 MW, and the capacity of the sector is expected to rise to 14,000 MW by 2022. To facilitate this expansion, the Mexican government proposed an energy transition whereby renewable energy will account for 35 percent of the national power output by 2026, with wind accounting for approximately 40 percent of this capacity. Consequently, Mexico's wind energy generation capacity has increased rapidly since 2008 [5].

Significant research has been conducted on the feasibility and potential of wind energy in various climates worldwide. Velasco-Herrejón and Bauwens [6] used the capabilities method to examine the factors that affect community acceptance of energy technologies. This research relies on the capacity method to reveal what these justice tenets imply for the native population near wind farms in southern Mexico. A bottom-up approach to understanding the complicated concepts of energy justice within a community can lead to increased knowledge of justice considerations related to the community acceptance of energy technology. These criteria pertain to inclusive community involvement, which recognizes indigenous day-to-day existence and a common identity in Mexico.

Hernández-Escobedo Perea-Moreno and Manzano-Agugliaro [7] studied the wind energy situation in Mexico and used the data reported in Scopus. Huesca-Pérez, Sheinbaum-Pardo and Köppel [5] examined the social implications of wind energy from four perspectives: socio-environmental, socio-economic, socio-cultural, and stakeholder involvement, and further analyzed wind power projects in the Isthmus of Tehuantepec (Mexico), against the backdrop of a literature review. Additionally, Dunlap [8] reported a study on the advent of the Bi Hioxo Wind Park on a common property established to the south of Juchitán (Mexico). Perea-Moreno, Alcalá, and Hernandez-Escobedo [9] calculated the primary wind parameters of 141 places along the Gulf of Mexico states. Siamanta and Dunlap [10] examined the similarities and contrasts between two wind-energy development experiences in Crete, Greece, and Oaxaca, Mexico.

For the South-West area of Algeria, Himri, Merzouk, Kasbadji Merzouk and Himri [11] used the RETScreen and WASP tools to analyze windfarm economic feasibility and wind power potential. Serdari, Muda, Buzra, Bërdufi, Halili, Halili, Mitrushi and Berberi [12] investigated the cost, greenhouse gas reduction, financial analysis, and other technical and economic aspects. The Wind Atlas Balkan was used in this study, with measurements lasting one hour each for 34 years (1981–2014). Hadi, Oudah and Al-Baldawi [13] observed wind data at heights of 10, 30, 50, and 52 m every 10 min to conduct a preliminary economic feasibility study of a wind power plant in Al-Shehabi (Wasit-Iraq).

Malka, Konomi, Gjeta, Drenova and Gjikota [14] investigated the extent to which the power system's absorption capacity from RES electricity may be increased. Taghinezhad and Sheidaei [15] and Wang, Guo, Fan and Li [16] investigated the operation of a ducted wind turbine, under various wind conditions, in a study that enhanced forecast accuracy at a target location and reported a multiple-point model for short-term wind speed prediction relying on data from numerous places. Another study by Lee [17] determined the best interpolation method among deterministic and geostatistical interpolation strategies.

Zhang, Liu, Zhao, Post and Chen [18] report on the history, present situation, and projected trends of wind energy growth in New Zealand. They evaluated the top wind energy storage option for New Zealand by contrasting seven popular wind energy storage systems and the design and operation of tiny domestic wind turbines with conventional power ratings ranging from 0.004 to 16 kW in New Zealand cities. Rezaei, Naghdi-Khozani and Jafari [19] reviewed the financial aspects of harnessing wind energy to produce hydrogen in 34 capital cities in Afghanistan. Initially, the levelized cost of the power produced by the wind was expected. The energy efficiency of the hydrogen production system, levelized cost of hydrogen (LCOH), and payback period for installing a wind farm were then analyzed for the city with the lowest levelized cost of electricity.

Rezaei, Mostafaeipour, Saidi-Mehrabad, Qolipour, Sedaghat, Arabnia and Momeni [20] conducted a sensitivity analysis on the variables influencing wind sites based on 13 cities in the Iranian province of Fars. The cities were then rated using the dual version of the data envelopment analysis model, and six criteria—wind conditions, population, available land conditions, distance to distribution networks, frequency of natural disasters, and price of land—were adopted.

Rezaei-Shouroki, Mostafaeipour and Qolipour [21] selected and prioritized 13 Iranian cities in the province of Fars based on how well-suited they were for the development of wind farms. The cities were

ranked and prioritized using six criteria. The most crucial of these characteristics, wind power density, was determined by gathering 3-hour wind speed datasets between 2004 and 2013. Prioritizing and ranking cities were performed using the Data Envelopment Analysis (DEA) approach, and the results were then validated using the Analytical Hierarchy Process (AHP) and Technique for Order of Preference by Similarity to Ideal Solution (FTOPSIS) methods. Additionally, distributed renewable energy access (DREA) based on a wind energy conversion system integrated into low-voltage direct current (LVDC) networks is presented by Miranda, Salgado-Herrera, Rodríguez-Hernández, Rodríguez-Rodríguez, Robles, Ruiz-Robles and Venegas-Rebollar [22]. The DREA was examined and modelled in relation to wind speed data collected over the course of a year at Baja California, Sur. Based on an analysis of the wind speed turbulence intensity, five type-4 wind turbines were subjected to the representative variability.

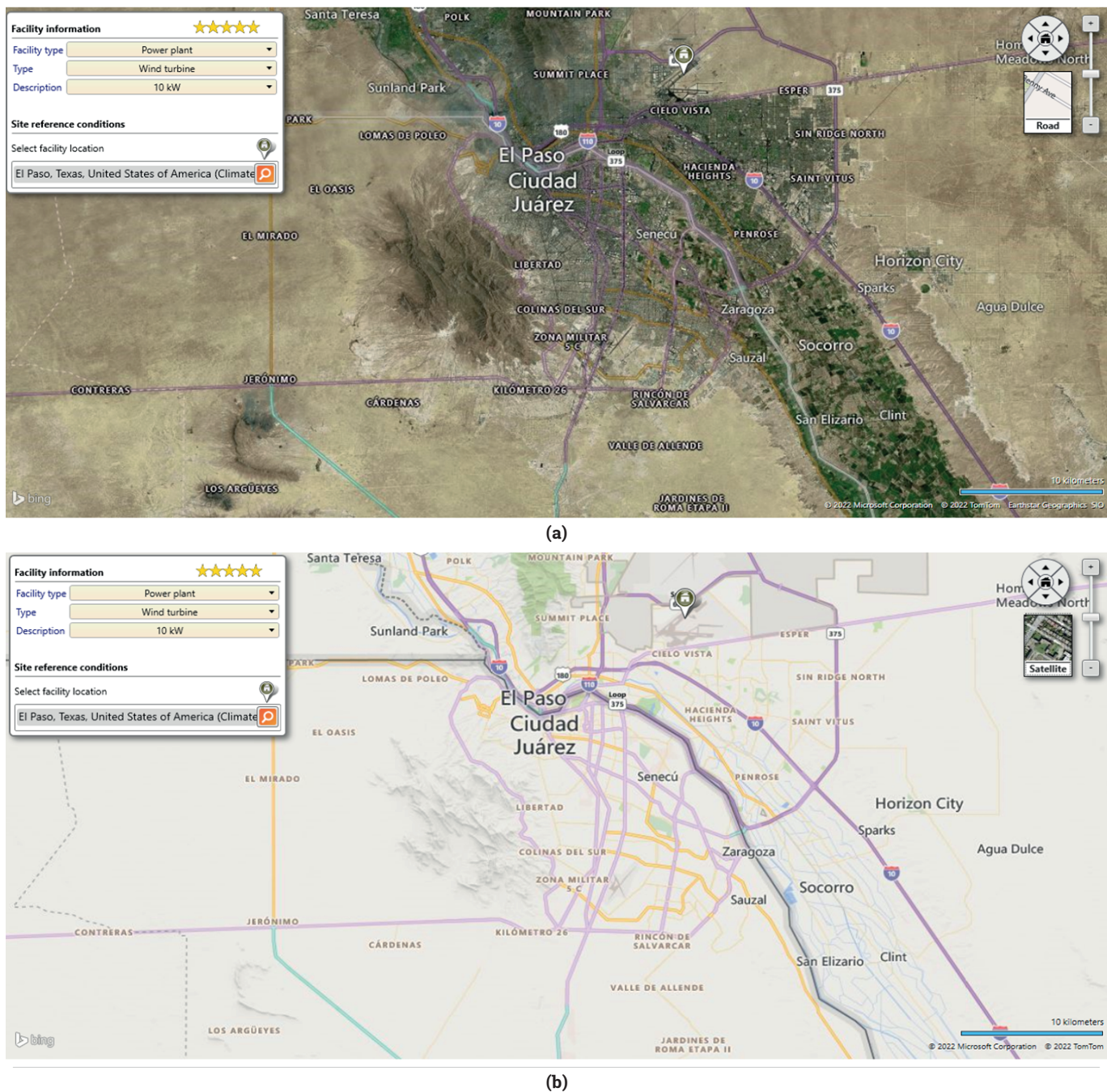
Also, relative to the beaches in the states of Tabasco, Campeche, and Yucatán, Hernández Galvez, Chuck Liévano, Sarracino Martínez, Lastres Danguillecourt, Dorrego Portela, Narcía, Saldaña Flores, Pampillón González, Perea-Moreno and Hernandez-Escobedo [23] report the analysis and viability of using offshore wind energy. This is due to the availability of data on that area, but there are also stated sustainability standards that can be applied in other areas, and data from MERRA-2, ERA-5, WASP, and Windographer tools were used. According to this report, Tabasco, Campeche, and Yucatán in Mexico were determined to have wind capacity factors of 32%, 37%, and 46%, respectively. Each wind farm may generate more than 35% of the area's electricity needs under the WF100% scenario, with Campeche and Yucatán's wind farms contributing more than 70 %. Mexico has fewer wind energy facilities than other North American countries. Texas has the largest installed wind power capacity, followed by New Mexico, Arizona, and California, all of which border Mexico. Geographical and chronological data on wind energy resources were considered as the wind resources in these bordering states, suggesting the need to study wind energy resources in Northern Mexico. Wind speeds greater than 4.51 m/s are present throughout the states of Chihuahua, Coahuila, Nuevo Leon, and Tamaulipas in northern Mexico. Since Mexico began to use renewable energy sources in recent years, the government has demanded an energy reform that enhances the circumstances for wind energy investment in Mexico [24].

Reviewing previous studies in the field of wind energy potential measurement, it was concluded that wind speed in the study area has low potential, and it is not possible to expand wind energy at a large or even medium scale. However, a more detailed study is yet to be conducted in these areas regarding the possibility of expanding wind energy at a smaller scale from an economic standpoint. This study investigated the wind energy potential at the Ciudad Juárez station in the north of Chihuahua State (Mexico) for 12 consecutive months. The economic feasibility of installing smaller wind turbines in Ciudad Juárez using the RETScreen software to determine whether the study site is economically viable for installing these wind turbines.

The novelty of this work is the study of the feasibility of using three small-scale wind turbine models, including S-343, Bergey BWC Excel, and AOC 15/50, in the geographic location of Ciudad Juárez (Chihuahua, Mexico) in a 12-month model using the RETScreen software. Additionally, using three defined economic scenarios, a sensitivity analysis is reported regarding the performance of these three turbine models, having determined and discussed their operational conditions.



## 2. METHODOLOGY

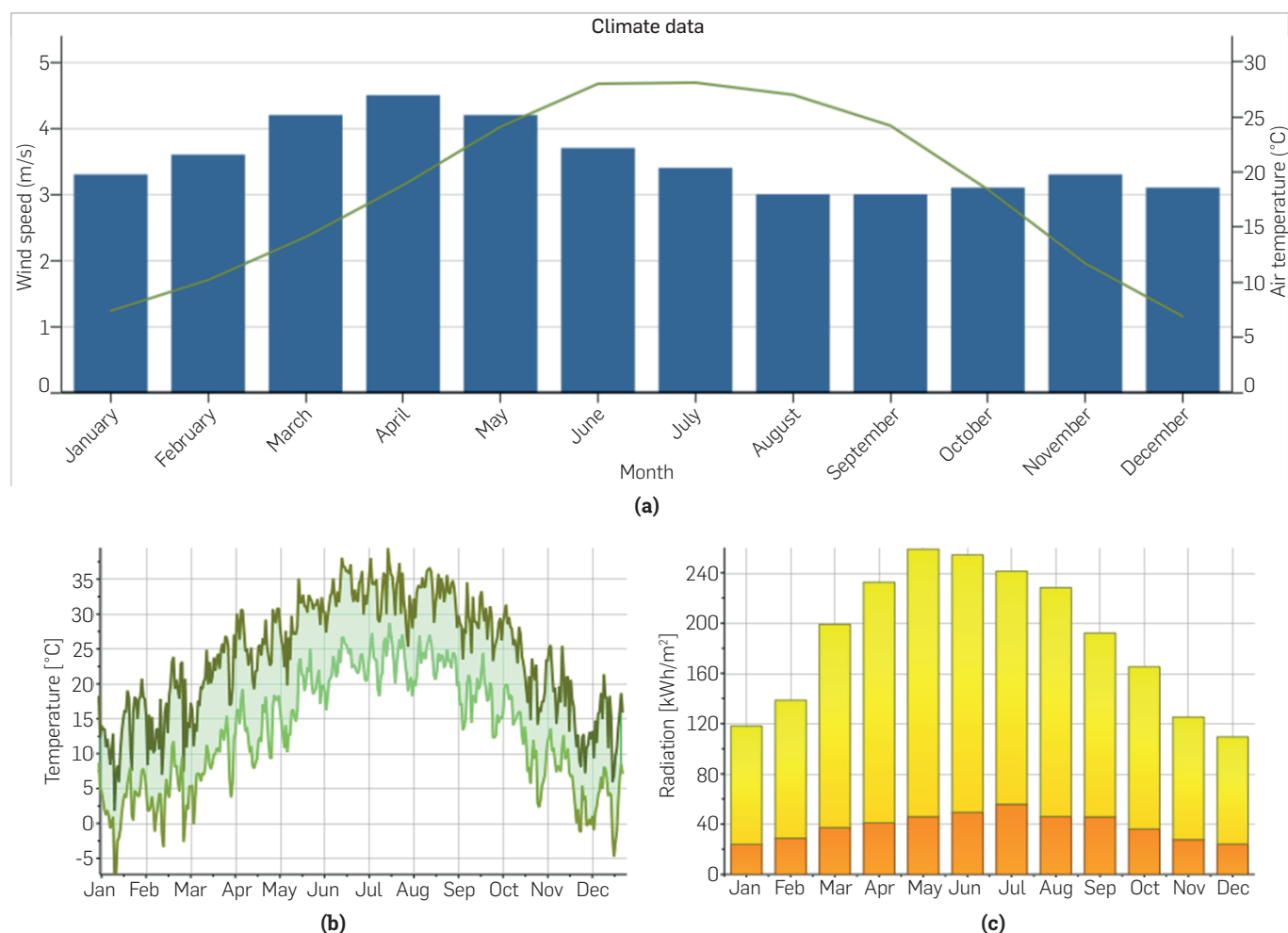


**Figure 1.** (a) The geographical location (b) road map of the study site, Ciudad Juárez

### STUDY SITE

Ciudad Juárez is situated at geographic coordinates  $31^{\circ}44' 22''$  N  $106^{\circ}29' 13''$  W and an altitude of 1137 meters above sea level, where the border between the United States and Mexico ceases. Marked by the Rio Grande, it becomes a geodesic line in an east-west direction and a wide valley formed by the same river between two

mountain ranges to the north, currently in the United States, the Franklin Mountains that reach 2192 m above sea level, and to the south, the Sierra de Juárez that largely forms the western limit of the urban area; in the Sierra de Juárez, the Cerro Bola is located, with an elevation of characteristic formation of the area, which reaches approximately 1800 m above sea level [25]. Figure 1(a) shows the geographical location, and figure 1(b) shows the road map of Ciudad Juárez.



**Figure 2.** (a) Changes in average monthly wind speed (Blue bar chart) and average monthly air temperature (Green line) (b) maximum and minimum daily temperature variation (c) diffuse radiation (orange) and global radiation (yellow) in Ciudad Juárez

Wind speed data for 12 months from the first of January 2021 to the end of December 2021 have been extracted and analysed. The average temperature of the station was 18.3°C, and the average humidity was 41%. Figure 2 shows the changes in the average monthly wind speed and the average monthly air temperature for Ciudad Juárez. Wind energy potential for installation of wind turbines at average speeds less than 4 m/s is poor, 4-5.5 m/s is tolerable, 5.5-6.7 m/s is good to very good, and excellent for speeds above 6.7 m/s is possible [26]. At the study site (Ciudad Juárez), the wind speed at the study height (10 m) was low. For a more accurate assessment, it is necessary to examine the economic and technical feasibility of small wind turbines for home use, as discussed below.

Figure 2(a) shows that the monthly wind speed varied between 3 m/s and 4.5 m/s. The highest and lowest wind speeds were recorded in April and August and September, respectively. Given that the start-up speed of many small wind turbines is 3 to 3.5 m/s, it is possible to generate wind power on a small scale during the year. Nonetheless, from an economic standpoint, this plan should also be examined to ensure its feasibility in current circumstances. Furthermore, figure 2(b) shows the maximum and minimum daily temperature variations, and figure 2(c) shows the diffuse radiation and global radiation in Ciudad Juárez.

**Table 1.** Specifications of wind turbines and estimated costs

Turbine	Manufacturer	Rated Power (kW)	Hub-Height (m)	Rotor Diameter (m)	Turbine cost (\$)	Initial Cost (\$)	Operation & Maintenance Cost (\$)	References
S-343	Endurance	5	36.6	6.4	30,000	42,000	525	[27]
Bergey BWC	Bergey	10	30.5	7	50,000	70,000	875	[28]
Excel								
AOC								
15/50	Atlantic Orient	50	30	15	250,000	350,000	4,375	[29]

Table (1) displays the findings of the RETScreen software study for the three small wind turbines. The energy production cost (\$), Annual CO<sub>2</sub> reduction (tone), capacity factor, Net present value, payback period, exported electricity, and benefit-cost ratio are some of the output characteristics.

### RETSCREEN SOFTWARE

This software is managed under the leadership and financial support of the Canmet ENERGY Varennes Research Center, an organization affiliated with the Canadian government. The main executive team of this software benefits from cooperation with several governmental and multilateral organizations and has the technical support of a network of industry, government, and academic experts. Major collaborators include York University's Sustainable Energy Initiative, the Global Environment Facility, the World Bank Carbon Management Fund, Independent Power System Operator Ontario's Energy Technology, Industry and Economics Unit, and the NASA Langley Research Center's Renewable Energy and Energy Optimization Partnership.

To assist the user, RETScreen combines several databases, including global climate databases from 6,700 ground stations and NASA satellite data, as well as baseline, cost, project, hydrology, and product databases. In addition, this software includes extensive integrated learning resources, including an available eBooklet. Users can create a large database and enter their desired parameters such that the program can help them make decisions [30-32].

RETScreen allows experts and decision-makers to quickly identify, evaluate, and optimize the feasibility and technical and financial potential of clean energy projects. Furthermore, it allows managers to easily measure the actual performance of their sub-assemblies and identify and implement opportunities to save energy and costs. According to statistics, this software is widely used to facilitate and implement clean energy projects. For example, refer to the following:

- To upgrade the Empire State Building using energy optimization plans at the production centers of 3M Canada
- Widely used by the Irish wind energy industry to analyse potential new projects
- To monitor the performance of hundreds of schools in Ontario
- By the plan of simultaneous electricity and heat production of Manitoba Hydro company (optimization of bioenergy to check project applications)
- For energy management on university and college campuses
- In multi-year performance estimation and evaluation of photovoltaic projects in Toronto, Canada

## 3. RESULTS

### ECONOMIC ANALYSIS

The amount of electricity generated, and the amount of wind energy converted to electricity for the three wind turbines in terms of megawatts are calculated in Table 2. As it is known, the AOC 15/50 turbine with a capacity of 50 kW and 5 units has the highest output energy (164 MWh per year).

The capacity factor of a turbine is equal to the ratio of its output energy to its capacity. The capacity factor is another way to express the amount of energy the wind turbine produces and determines whether it produces the desired energy. For instance, if the capacity factor for a turbine is above 20%, even if one does not know how much energy the turbine produces, one can be sure that it is producing its best. In addition, with a higher capacity factor, the final cost of wind electricity is reduced. Research has shown that the appropriate capacity factor for wind farms is between 20% and 40% [33].

Table 2 shows that the calculated capacity factors for the three wind turbines ranged from 6.5% to 10.5%. These values are very low and indicate that the wind turbines in Ciudad Juárez have low energy production, and at the same time, their installation is not economical. However, it is noteworthy that in a feasibility study, other economic parameters must also be considered in addition to the capacity factor of the turbines to reach a complete conclusion. The Energy production costs from the wind turbines are shown in Table 2. The cost of electricity generated by these turbines varies between 0.4225\$ and 0.6857\$ per kilowatt hour (Canadian Dollar). In 2019, the global weighted average energy cost for new onshore wind farms was 0.053 USD/kWh, with country/region values ranging from USD 0.051 to USD 0.099/kWh. Without financial assistance, today's most competitive projects have costs as low as 0.030 USD/kWh [34]. Therefore, our findings show that the costs obtained for the Ciudad Juárez region are higher than those of selling wind power.

One positive feature of the RETScreen software is the calculation of the annual CO<sub>2</sub> reduction for a feasibility project for renewable energy systems. To calculate the amount of annual CO<sub>2</sub> reduction, the software equated the amount of energy generated by the desired wind turbine with the energy generated by systems that pollute the environment and produce CO<sub>2</sub>. Hence, it can be estimated, if replaced, how much CO<sub>2</sub> will the wind turbine reduce instead of the previous system (which pollutes the environment). As shown in Table 2, the largest CO<sub>2</sub> reduction was related to the AOC 15/50 turbine, which is equivalent to 95 tons of CO<sub>2</sub>.

**Table 2.** Results extracted from RETScreen software.

Turbine	Energy production cost (\$/kWh)	Annual CO <sub>2</sub> reduction (tone)	Capacity factor (%)	Net present value (\$)	Payback period (years)	Exported electricity (MWh)	Benefit-Cost (B-C) ratio
S-343	0.4225	13	10.5	-63,944	> project life	23	-2.4
Bergey BWC Excel	0.6857	16	6.5	-146,754	> project life	28	-2.9
AOC 15/50	0.5905	95	7.5	-709,358	> project life	164	-2.8



The benefit-cost (B-C) ratio is equal to the ratio of the current annual value of all project revenues and benefits to the total cost of the wind energy project. Values above 1 indicate that the project is economically viable. Table 2 shows that the ratios of the three turbines are negative, which suggests that the project can be economically unprofitable.

The net present value (NPV) in engineering economics is a standard method for evaluating economic plans. The output is discounted at a certain rate. In other words, the net present value of the investment funds is calculated, and after deducting the initial investment amount, it is recognized as the net present value. Current net worth is widely used in economic calculations, engineering economics, country budgets, microeconomics, macroeconomics, trade, and industry.

Since for calculating the NPV, the cash inflows and outflows of the project must be carefully discounted (according to the set discount rate), and this is often complicated and time-consuming due to the complexity of the cash flows, new tools easily and accurately perform these calculations in a few seconds, showing the results in the form of net discounted cash flows. A design is acceptable if its NPV is positive [35] and, as can be observed, the NPV is calculated for three small wind turbines, and all three have a negative value, which indicates that installation in Ciudad Juárez is not justified. The payback period occurs when a project's projected benefits reimburse its costs. In other words, the payback period is when the projected cumulative income equals the investment amount [35]. With this method, the criterion for evaluating the plan is the time required for the return on investment. Shorter payback periods are more attractive than longer ones. This method is particularly useful when comparing two or more designs. As seen in Table 2, the payback period for the three turbines is greater than the project life, indicating a high payback period and economic unsuitability of the project.

## SENSITIVITY ANALYSIS

Sensitivity analysis is a stage of economic evaluation of wind projects that examines the effects of economic and financial fluctuations resulting from changes in the input economic parameters. Therefore, this analysis identifies and estimates sensitive and effective indicators related to projects. For a better economic assessment, except for the current scenario, the inflation rate was assumed to be 7%, discount rate was 9%, fuel cost escalation rate was 7%, and project life was 20 years. Three new scenarios were considered for the economic analysis of the use of the three turbines listed in Table 2. Table 3 lists the parameters related to each of the scenarios and their values, and the results of the changes applied to the three turbines studied are listed in Table 4.

**Table 3.** Values related to input parameters in 3 different scenarios.

Parameters	Scenario 1	Scenario 2	Scenario 3
Inflation rate (%)	6%	4%	2%
Feed-in-tariff rate (cent/kWh)	10	15	20
GHG reduction credit(\$/tonCO <sub>2</sub> )	500	1000	2000
Initial costs reduction (%)	5	10	15

The CO<sub>2</sub> reduction credit is the number of incentives given to renewable electricity producers for one ton of annual carbon dioxide reduction due to renewable electricity generation. The reduction in initial costs is the percentage of reduction in investment costs. As shown in Table 4, the turbines were economically justified in the

**Table 4.** Results for 3 scenarios

Turbine	Net present value (\$)	Benefit-Cost (BC) ratio	Payback period (years)	Energy production cost (\$/kWh)
S-343				
Scenario 1	-55,485	-2.3	8	0.3821
Scenario 2	-35,738	-1.2	3.6	0.3465
Scenario 3	-16,902	-0.13	1.7	0.3153
Bergey BWC Excel				
Scenario 1	-129,838	-2.8	15.5	0.6202
Scenario 2	-99,777	-2.1	6.3	0.5624
Scenario 3	-71,538	-1.4	2.9	0.5117
AOC 15/50				
Scenario 1	-634,776	-2.7	12.4	0.5341
Scenario 2	-462,265	-1.9	5.3	0.4843
Scenario 3	-308,863	-1.1	2.4	0.4407

second and third scenarios. This situation is related to the second scenario, in which the inflation rate is 4%. The feed-in tariff rate was 0.15 cents/kWh, the GHG reduction credit was 1000 \$/tonCO<sub>2</sub>, Reduction in Initial costs was 10%. In the third scenario, the inflation rate is 2%, the feed-in-tariff rate is 0.2 cent/kWh, the GHG reduction credit is 2000 \$/tonCO<sub>2</sub>, and the Reduction in Initial costs is 15%. Obviously, reaching such a situation for the second scenario seems difficult, and it is very difficult to reach the third scenario. As shown in Table 4, considering the above conditions in the second scenario, the payback period for the S-343 turbine is 3.6 years, for the Bergey BWC turbine 6.3 years and the AOC 15/50 turbine Equivalent to 5.3 years. Regarding the third scenario, the payback period is 1.7 years for the S-343 turbine, 2.9 years for the Bergey BWC turbine, and 2.4 years for the AOC 15/50 turbine.

## 4. CONCLUSION

Wind energy is a new renewable energy source used to generate wind power, showing a high growth rate. In recent years, the use of this energy source has begun in Mexico, but it has little capacity. This study focused on the wind energy potential at the Ciudad Juárez station in the north of Chihuahua state in Mexico for 12 consecutive months. The economic feasibility of installing smaller wind turbines in Ciudad Juárez using RETScreen software was used to determine whether the study site is economically viable. The conclusions of this study can be summarized as follows.

The predicted capacity factors of the three wind turbines ranged from 6.5% to 10.5%. These numbers are extremely low and show that the Ciudad Juárez wind turbines produce very little electricity, while also being expensive to install.

These turbines produce power at a price per kilowatt hour ranging from 0.4225 to 0.6857 dollars (Canadian Dollar). With country/regional values ranging from 0.051 to 0.099 USD/kWh, the

global weighted average energy cost for new onshore wind farms in 2019 was 0.053 USD/kWh. Currently, the most competitive projects have prices as low as USD 0.030/kWh, without financial help. Thus, our findings suggest that the costs incurred in the Ciudad Juárez region are greater than those of selling wind energy.

Cost-benefit (B-C) ratio values above 1 denote the project's economic viability, and the three turbines have a negative ratio, suggesting that the project could not be financially viable.

Three small wind turbine NPVs are calculated with negative values, indicating that their installation in Ciudad Juárez is unjustifiable. Furthermore, the payback duration for the three turbines exceeds the project life, demonstrating the project's economic inadequacy and extended payback period.

## REFERENCES

- [1] Jaramillo-Cardona, J. P., Perafan-Lopez, J. C., Torres-Madroño, J. L., Nieto-Londoño, C., & Sierra-Pérez, J. (2022). Techno-economic assessment of small wind turbines under la Guajira-Colombia resource conditions. *CT&F-Ciencia, Tecnología y Futuro*, 12(1), 45-56. <https://doi.org/10.29047/01225383.400>
- [2] Amaya-Martínez, P. A., Saavedra-Montes, A. J., & Arango-Zuluaga, E. I. (2014). A statistical analysis of wind speed distribution models in the Aburrá Valley, Colombia. *CT&F-Ciencia, Tecnología y Futuro*, 5(5), 121-136. <https://doi.org/10.29047/01225383.36>
- [3] Pérez-Denicia, E., Fernández-Luqueño, F., & Vilariño-Ayala, D. (2021). Suitability assessment for electricity generation through renewable sources: Towards sustainable energy production. *CT&F-Ciencia, Tecnología y Futuro*, 11(1), 109-122. <https://doi.org/10.29047/01225383.260>
- [4] Cancino-Solórzano, Y., Gutiérrez-Trashorras, A. J., & Xiberta-Bernat, J. (2011). Current state of wind energy in Mexico, achievements and perspectives. *Renewable and Sustainable Energy Reviews*, 15(8), 3552-3557. <https://doi.org/10.1016/j.rser.2011.05.009>
- [5] Huesca-Pérez, M. E., Sheinbaum-Pardo, C., & Köppel, J. (2016). Social implications of siting wind energy in a disadvantaged region—The case of the Isthmus of Tehuantepec, Mexico. *Renewable and Sustainable Energy Reviews*, 58, 952-965. <https://doi.org/10.1016/j.rser.2015.12.310>
- [6] Velasco-Herrejon, P., & Bauwens, T. (2020). Energy justice from the bottom up: A capability approach to community acceptance of wind energy in Mexico. *Energy Research & Social Science*, 70, 101711. <https://doi.org/10.1016/j.erss.2020.101711>
- [7] Hernández-Escobedo, Q., Perea-Moreno, A. J., & Manzano-Agugliaro, F. (2018). Wind energy research in Mexico. *Renewable Energy*, 123, 719-729. <https://doi.org/10.1016/j.renene.2018.02.101>
- [8] Dunlap, A. (2018). Counterinsurgency for wind energy: the Bii Hloxo wind park in Juchitán, Mexico. *The Journal of Peasant Studies*, 45(3), 630-652. <https://doi.org/10.1080/03066150.2016.1259221>
- [9] Perea-Moreno, A. J., Alcalá, G., & Hernandez-Escobedo, Q. (2019). Seasonal wind energy characterization in the Gulf of Mexico. *Energies*, 13(1), 93. <https://doi.org/10.3390/en13010093>
- [10] Siamanta, Z. C., & Dunlap, A. (2019). 'Accumulation by wind energy': Wind energy development as a capitalist Trojan horse in Crete, Greece and Oaxaca, Mexico. *ACME: An International Journal for Critical Geographies*, 18(4), 925-955. <https://acme-journal.org/index.php/acme/article/view/1718>
- [11] Himri, Y., Merzouk, M., Merzouk, N. K., & Himri, S. (2020). Potential and economic feasibility of wind energy in south West region of Algeria. *Sustainable Energy Technologies and Assessments*, 38, 100643. <https://doi.org/10.1016/j.seta.2020.100643>
- [12] Serdari, E., Muda, V., Buzra, U., Bërdufi, I., Halili, D., Halili, M., & Berberi, P. (2019, February). The feasibility study of a 12 MW grid-connected wind power farm in Albania using RETScreen. In *AIP Conference Proceedings* (Vol. 2075, No. 1, p. 200021). AIP Publishing LLC. <https://doi.org/10.1063/1.5099035>
- [13] Hadi, F. A., Oudah, S. S., & Al-Baldawi, R. A. (2020). An Economic Study of a Wind Energy Project Using Different Sources of Wind Data. *Iraqi Journal of Science*, 322-332. <https://doi.org/10.24996/ij.s.2020.61.2.10>
- [14] Malka, L., I. Konomi, I., Gjeta, A., Drenova, S., & Gjikota, J. (2020). An approach to the large-scale integration of wind energy in Albania. *International Journal of Energy Economics and Policy*, 10, 327-343. <https://doi.org/10.32479/ijee.9917>
- [15] Taghinezhad, J., & Sheidaei, S. (2022). Prediction of operating parameters and output power of ducted wind turbine using artificial neural networks. *Energy Reports*, 8, 3085-3095. <https://doi.org/10.1016/j.egyr.2022.02.065>
- [16] Wang, L., Guo, Y., Fan, M., & Li, X. (2022). Wind speed prediction using measurements from neighboring locations and combining the extreme learning machine and the AdaBoost algorithm. *Energy Reports*, 8, 1508-1518. <https://doi.org/10.1016/j.egyr.2021.12.062>
- [17] Lee, C. (2022). Long-term wind speed interpolation using anisotropic regression kriging with regional heterogeneous terrain and solar insolation in the United States. *Energy Reports*, 8, 12-23. <https://doi.org/10.1016/j.egyr.2021.11.285>
- [18] Zhang, Z., Liu, X., Zhao, D., Post, S., & Chen, J. (2022). Overview of the development and application of wind energy in New Zealand. *Energy and Built Environment*. <https://doi.org/10.1016/j.enbenv.2022.06.009>
- [19] Rezaei, M., Naghdi-Khozani, N., & Jafari, N. (2020). Wind energy utilization for hydrogen production in an underdeveloped country: An economic investigation. *Renewable Energy*, 147, 1044-1057. <https://doi.org/10.1016/j.renene.2019.09.079>
- [20] Rezaei, M., Mostafaeipour, A., Saidi-Mehrabad, M., Qolipour, M., Sedaghat, A., Arabnia, H. R., & Momeni, M. (2020). Sensitivity analysis of criteria to optimize wind farm localizing: A case study. *Wind Engineering*, 44(3), 294-312. <https://doi.org/10.1177/0309524X19849848>
- [21] Rezaei-Shouroki, M., Mostafaeipour, A., & Qolipour, M. (2017). Prioritizing of wind farm locations for hydrogen production: A case study. *International Journal of Hydrogen Energy*, 42(15), 9500-9510. <https://doi.org/10.1016/j.ijhydene.2017.02.072>
- [22] Miranda, R. F., Salgado-Herrera, N. M., Rodríguez-Hernández, O., Rodríguez-Rodríguez, J. R., Robles, M., Ruiz-Robles, D., & Venegas-Rebollar, V. (2022). Distributed generation in low-voltage DC systems by wind energy in the Baja California Peninsula, Mexico. *Energy*, 242, 122530. <https://doi.org/10.1016/j.energy.2021.122530>
- [23] Hernández Galvez, G., Chuck Liévano, D., Sarracino Martínez, O., Lastres Danguillecourt, O., Dorrego Portela, J. R., Narcía, A. T., ... & Hernandez-Escobedo, Q. (2022). Harnessing Offshore Wind Energy along the Mexican Coastline in the Gulf of Mexico—An Exploratory Study including Sustainability Criteria. *Sustainability*, 14(10), 5877. <https://doi.org/10.3390/su14105877>
- [24] Q. Hernández-Escobedo, R. Saldaña-Flores, E.R. Rodríguez-García, F. Manzano-Agugliaro, Wind energy resource in Northern Mexico, *Renewable and Sustainable Energy Reviews*, 32 (2014) 890-914. <https://doi.org/10.1016/j.rser.2014.01.043>
- [25] Rivera, N. I. R., Gill, T. E., Gebhart, K. A., Hand, J. L., Bleiweiss, M. P., & Fitzgerald, R. M. (2009). Wind modeling of Chihuahuan Desert dust outbreaks. *Atmospheric Environment*, 43(2), 347-354. <https://doi.org/10.1016/j.atmosenv.2008.09.069>
- [26] Mostafaeipour, A. (2010). Feasibility study of harnessing wind energy for turbine installation in province of Yazd in Iran. *Renewable and Sustainable Energy Reviews*, 14(1), 93-111. <https://doi.org/10.1016/j.rser.2009.05.009>
- [27] Patel, M. R. (2021). *Wind and solar power systems: design, analysis, and operation*. CRC press. <https://www.routledge.com/Wind-and-Solar-Power-Systems-Design--Analysis--and-Operation/Patel-Beik/p/book/9780367476939>
- [28] Palese, C., Lässig, J. L., Cogliati, M. G., & Bastanski, M. A. (2000). Wind regime and wind power in North Patagonia, Argentina. *Wind Engineering*, 24(5), 361-377. <https://doi.org/10.1260/0309524001495738>
- [29] Rehman, S., Halawani, T. O., & Husain, T. (1994). Weibull parameters for wind speed distribution in Saudi Arabia. *Solar Energy*, 53(6), 473-479. [https://doi.org/10.1016/0038-092X\(94\)90126-M](https://doi.org/10.1016/0038-092X(94)90126-M)

## 5. FUTURE WORKS

It is recommended that researchers use combined wind-solar and wind-biomass systems in future studies to achieve a more effective and reliable system in the geographical conditions of Ciudad Juárez. Ciudad Juárez has a very high potential in the use of solar energy, and the existence of more than 700 factories and industrial units in this city could enable the use of their waste as a source of energy production, which seems to be an interesting possibility,



[30] Masoudinia, F. (2013, April). Retscreen--Small Hydro Project Software. In 2013 *International Conference on Communication Systems and Network Technologies* (pp. 858-861). IEEE. <https://doi.org/10.1109/CSNT.2013.184>

[31] Leng, G. J., Ah-You, K., Painchaud, G., Meloche, N., Bennett, K., Carpenter, S., ... & Sellers, P. (1998). Renewable energy technologies: project assessment tool: RETScreen [sup T] M <https://www.osti.gov/biblio/678950>

[32] SUSENO, W. J. (2021). *STUDI KELAYAKAN EKONOMI PEMBANGKIT LISTRIK TENAGA HYBRID (PLTH) PANTAI BARU MENGGUNAKAN SOFTWARE RETSCREEN* (Doctoral dissertation, Universitas Islam Sultan Agung Semarang). [http://wisuda.unissula.ac.id/app/webroot/img/library/detail82/S1%20Teknik%20Elektro\\_30601700037\\_fullpdf.pdf](http://wisuda.unissula.ac.id/app/webroot/img/library/detail82/S1%20Teknik%20Elektro_30601700037_fullpdf.pdf)

[33] Nedaei, M. (2014). Wind resource assessment in Hormozgan province in Iran. *International Journal of Sustainable Energy*, 33(3), 650-694. <https://doi.org/10.1080/14786451.2013.784319>

[34] Demirbas, A. (2009). Global renewable energy projections. *Energy Sources, Part B*, 4(2), 212-224. <https://doi.org/10.1080/15567240701620499>.

[35] Hrayshat, E. S. (2009). Techno-economic analysis of electricity generation by means of a proposed 50 MW grid-connected wind power plant for Jordan. *Energy Sources, Part B*, 4(3), 247-260. <https://doi.org/10.1080/15567240802534235>

## AUTHORS

Yashar Aryanfar

Affiliation: Department of Electric Engineering and Computation, Autonomous University of Ciudad Juárez. Av. Del Charro 450 Norte. Col. Partido Romero. Ciudad Juárez 32310, Chihuahua, México. ORCID: <https://orcid.org/0000-0002-0835-7894> e-mail: al216622@alumnos.uacj.mx & yashar.aryanfar@gmail.com

Jorge Luis García Alcaraz

Affiliation: Department of Industrial Engineering and Manufacturing, Autonomous University of Ciudad Juárez. Av. Del Charro 450 Norte. Col. Partido Romero. Ciudad Juárez 32310, Chihuahua, México ORCID: <https://orcid.org/0000-0002-7092-6963> e-mail: jorge.garcia@uacj.mx

Julio Blanco Fernández

Affiliation: Department of Mechanical Engineering, University of La Rioja. C/ San José de Calasanz 31, Logroño 26004, Logroño, La Rioja, Spain. ORCID: <https://orcid.org/0000-0002-7351-5342> e-mail: julio.blanco@unirioja.es

Liliana Avelar Sosa

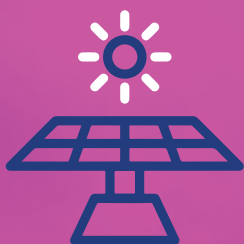
Affiliation: Department of Industrial Engineering and Manufacturing, Autonomous University of Ciudad Juárez. Av. Del Charro 450 Norte. Col. Partido Romero. Ciudad Juárez 32310, Chihuahua, México ORCID: <https://orcid.org/0000-0001-9490-2520> e-mail: liliana.avelar@uacj.mx

**How to cite:** Aryanfar, Y., García-Alcaraz, J. L., Blanco-Fernandez, J., & Avelar-Sosa, L. (2022). Potential and economic feasibility of a wind power plant in ciudad Juárez, México. *CT&F - Ciencia, Tecnología y Futuro*, 12(2), 39-4. <https://doi.org/10.29047/01225383.623>

# EN ECOPETROL ESTAMOS COMPROMETIDOS CON LA **TRANSICIÓN ENERGÉTICA**

POR ESO SEGUIMOS

**SUMANDO ACCIONES PARA LOGRARLO**



**+8 PARQUES  
SOLARES**



**INVESTIGACIONES  
DE ENERGÍA  
EÓLICA**



**COMPROMISO CERO  
EMISIONES NETAS  
DE CARBONO EN 2050**



**INICIAMOS PILOTO  
DE HIDRÓGENO  
VERDE**

USEMOS NUESTRA ENERGÍA  
PARA CONSTRUIR **UN PAÍS**  
**DE TODOS, PARA TODOS.**

**ecopetrol**