



Model comparison and effect of flow and accessories on the pressure drop of the unit ff-df-270/el of Universidad de Cartagena

Comparación de modelos y efecto del caudal y presencia de accesorios sobre la caída de presión en la unidad ff-df-270/el de la Universidad de Cartagena

Angel Villabona-Ortíz¹, Ángel González-Delgado^{2§}, Candelaria-Tejada-Tovar¹

¹ Universidad de Cartagena, Faculty of Engineering, Chemical Engineering Department, Process design and Biomass Utilization Group (IDAB). avillbonao@unicartagena.edu.co, ctejadat@unicartagena.edu.co

^{2§} Universidad de Cartagena, Faculty of Engineering, Chemical Engineering Department, Nanomaterials and Computer Aided Process Engineering Research Group (NIPAC). ORCID: <https://orcid.org/0000-0001-8100-8888> agonzalezd1@unicartagena.edu.co

Cómo citar: Villabona-Ortíz, A., González-Delgado, A., Tejada-Tovar, C. Model comparison and effect of flow and accessories on the pressure drop of the unit ff-df-270/el of Universidad de Cartagena. *Ingeniería y Competitividad*, 2023, 25(2); e-20111663. doi: 10.25100/iyv.v25i2.11663

Recibido: 19 octubre 2021 **Aprobado:** 20 abril de 2023

Abstract

The effect of flow variation on the theoretical calculation of pressure drop in pipes with fittings in the unit FF-DF-270/EL of the Universidad de Cartagena was studied, determining the coefficient of minor losses (K_f) caused by 45° and 90° elbows, and three types of valves, using water as the process fluid. The flow rate (Q) was varied, using a valve, between 24, 20, 16, 12 L/min. Darcy's and Bernoulli's theorem methods were used to evaluate friction losses. Were found minimum error percentages of 0.04% and maximum 8.16%; loss coefficients adjusted by minimum squares were obtained with R^2 of 0.999, comparing these K_f with the values reported in the plant manual and different authors. It was shown experimentally that the loss coefficient depends on each fitting, allowing the calculation of the theoretical pressure drop and comparing it with the experimental pressure drop, demonstrating that as the flow increases, an increase in pressure drop is generated. With the methodology applied in this research, the aim is to optimize pressure drop tests with fittings, and identify the characteristics of the pipe to obtain an optimum lower loss coefficient value.

Keywords: Pressure drop, Model comparison, Loss coefficient, Friction.



Resumen

Se estudió el efecto de la variación del caudal sobre el cálculo teórico de la caída de presión en tuberías con accesorios en la unidad FF-DF-270/EL de la Universidad de Cartagena, determinando el coeficiente de pérdidas menores (K_f) causadas por codos de 45° y 90° , y tres tipos de válvulas, utilizando agua como fluido de proceso. Se varió el caudal (Q), utilizando una válvula, entre 24, 20, 16, 12 L/min. Las pérdidas por fricción de determinaron con Darcy y el Teorema de Bernoulli. Se encontraron porcentajes de error mínimo de 0.04% y máximo 8.16%; se obtuvieron coeficientes de pérdidas ajustados por mínimos cuadrados con R^2 de 0.999, comparando estos K_f con los valores reportados en el manual de la planta y diferentes autores. Se demostró experimentalmente que el coeficiente de pérdida depende de cada accesorio, permitiendo calcular la caída de presión teórica y compararla con la caída de presión experimental, demostrando que al aumentar el caudal se generó un aumento en la caída de presión. Con la metodología aplicada en esta investigación se pretende optimizar ensayos de caída de presión con accesorios, e identificar las características de la tubería para obtener un valor de coeficiente de pérdidas menores óptimo.

Palabras clave: *Caída de presión, Comparación de modelos, Coeficiente de pérdidas, Fricción.*

Introduction

Within the study of fluid dynamics for different operations, especially in the industrial sector, the transport of fluids is a fundamental and well-studied part, due to the pressure losses that can occur along their path (1). Pressure drop is an important parameter because it influences the proper operation, evaluation and design of processes (2). The pressure losses can be calculated with equations derived from Bernoulli's Theorem taking into account the necessary balances for each situation.

In the calculation of pressure drop, in addition to kinetic or potential energy factors, there are friction loss and fitting loss factors. The latter, known as minor losses, refers to those occurring when there is a change in the section or path of the fluid such as curves, bifurcations, elbows, joints, valves, branches, expansions, contractions, among others. The pressure loss can vary according to the geometry of the pipe, placement of arrangement of pumps, valves or fittings, the material of the pipe, the speed of the fluid, among others (3).

There are several expressions to calculate friction losses of theoretical or experimental origin, but in the case of minor losses there is not an absolute expression that shows a unique

result; the usual is to find a variety of values reported from different researchers, suppliers or manufacturers of fittings finding different values for the same fitting. In addition, the coefficient of minor losses can be taken as a variation of the friction factor with respect to the length and diameter of the pipe or as a constant for turbulent flows (4).

The evaluation of the loss coefficient is important because it allows to decrease the overall losses of the system and to obtain the best operating conditions. These conditions can be known from experimental tests in a network of pipes with different geometries, accessories and valves with load variations; this is how different studies are highlighted where the above is observed. In China, the flow coefficient was evaluated because it was associated with energy losses, although they used simulation, they used pipe networks with fittings for validation (5). In Quito-Ecuador, a test bench was designed and built for leakage testing of pipes and fittings. (6).

For all the above reasons, the need for studies such as the one presented in this article is highlighted, where the effect of flow variation on the pressure drop in pipes with fittings in the unit FF-DF-270/EL of the University of

Cartagena is evaluated, determining the coefficient of minor losses (K_f) caused by

elbows, valves, bifurcations, varying the flow in the values of 24, 20, 16, 12 L/min.

Methodology

Description of the experimental equipment

The equipment used for this research is the Universidad de Cartagena's unit FF-DF-270/EL, whose scheme is shown in Figure 1. It consists of a water storage tank, two centrifugal pumps located in parallel, a rotameter, an electronic pressure sensor, voltage and amperage meter, and smooth piping systems with fittings. As the main interest was to work with a pipe with different fittings, the water was only allowed to pass through pipe 4 of 1" nominal diameter, PVC schedule 80, which is composed of a 90° elbow, slanted seat valve, 45° elbow, a Y joint, a ball valve, and a T joint. The properties of the water, such as density and viscosity, were measured using correction factors considering the temperature and atmospheric pressure in Cartagena.

Experimental of K_f calculation

To take the data in the equipment, initially the water level in the tank was checked, the equipment was turned on and the pumps were activated at full power (1750 rpm). All the valves were opened to debug the system guaranteeing the exit of air in the pipes, then all the valves were closed with the exception of the one that gives way to pipe 4. For the pressure drop data, flows of 24, 20, 16, 12 L/min were used and with pressure sensor hoses they were in each fitting as follows: 90° elbow, Inclined seat valve, 45° elbow, direct Y joint, branch path Y joint, ball valve, a direct T joint and a branch path T joint. Finally, the data were recorded, and this procedure was repeated five times. Figure 2 presents the methodology for starting-up the plant. The flow managed during the experimental runs allowed managing generalized Reynolds numbers from 13075 to 26151 considering the specifications of diameters, speeds and the rheological properties of the water.

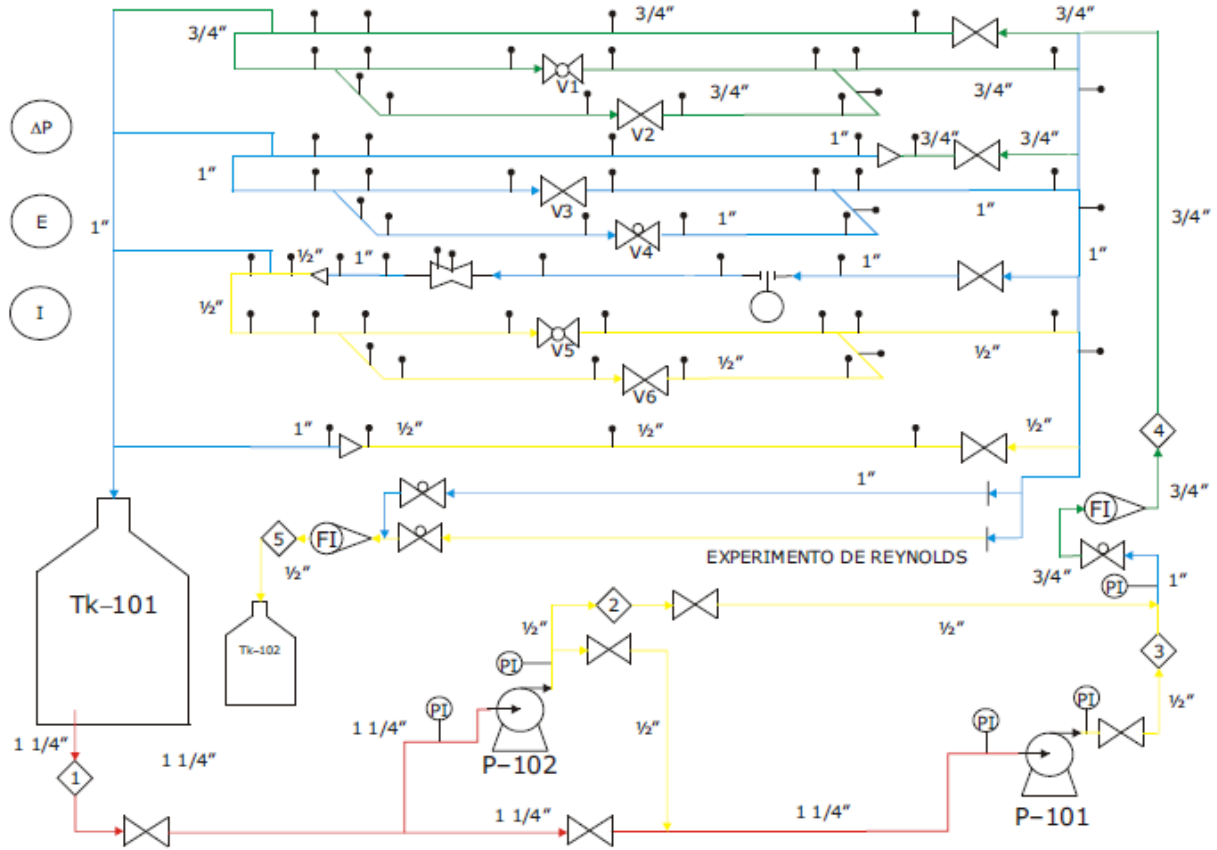


Figure 1. P&ID of the unit FF-DF-270/EL of block G of the University of Cartagena

where differential pressure (ΔP), differential of potential (E) and current (I) are the parameters to be measured. Pipes of different internal diameter sizes (1/2", 3/4", 1" and 1 1/4") are made of PVC and all are schedule 80. The feed tank (Tk-101) and recuperation tank (Tk-102) are fabricated in High-density polyethylene (HDPE), and have capacities of 100 and 20 L, respectively. Centrifugal pumps (P-101 and P-102) have a variable speed motor, with 0.5 HP, $6 < H < 21.5$ and 3450 rpm. All experiments were made by quintupled.

Pressure losses tests

Pressure losses can be determined through a mechanical energy balance, according to Equation 1, which is a derivation of Bernoulli's Theorem applied to a system of constant area with incompressible fluid, disregarding the terms associated with kinetic and potential energies, without changing the height of the

fluid and considering that the velocity was kept constant throughout the section (7).

$$\Delta P = h_f \gamma \quad (1)$$

Where h_f are the losses because of the fittings on the pipe and γ represents the specific weight equal to $\rho * g$.

The minor losses occur at the transition of the fluid within different fittings elbows, valves, pipe measuring elements, can be expressed as a function of the kinetic height corrected by the empirical coefficient (K_f) (8), which is the coefficient of resistance and is determined by Darcy's equation (Eq. 2) (9).

$$h_f = K_f \left(\frac{v_{prom}^2}{2g} \right) \quad (2)$$

Where K_f , loss coefficient; v_{prom} , average flow velocity; g, gravity. The average flow velocity is the ratio of volumetric flow and pipe cross-sectional area (10).

The loss coefficient is defined as the dimensionless value of the pressure drop between two pipe sides when there is a fitting (11). The determination of the K_f coefficient was made from a linear regression of the lower loss data pairs h_f (using equation 1) and the kinetic head data ($V^2/2g$), from the average of

the five experimental pressure drop data (12). After that, a linear equation was adjusted obtaining the value of K_f for each fitting (13), (14). Then, the theoretical pressure drops, and the error were calculated. All experiments were made by quintupled.

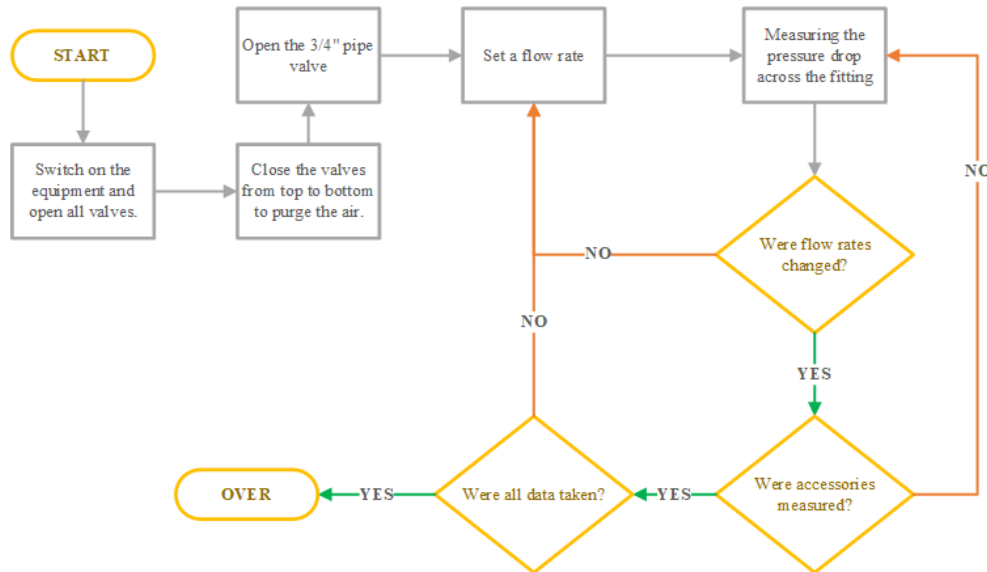


Figure 2. Start-up algorithm of the unit FF-DF-270/EL

Results and discussion

Measurement of experimental pressure drop

Using the unit FF-DF-270/EL of the G block at the University of Cartagena, data was collected of flow rates and experimental pressure drops for each fitting in the selected pipe section.

The data is summarized in Table 1 where the experimental pressure drop data (KPa) represents the average of the data reflected in the pressure meter.

Table 1. Average experimental pressure drops [KPa]

Q (L/min)	T Branch	T Direct	90° Elbow	V. Seat I	Y Branch	Y Direct	45° Elbow	V. Ball
12	0.37	0.27	0.45	0.36	0.22	0.22	0.23	0.21
16	0.52	0.34	0.53	0.47	0.29	0.24	0.30	0.24
20	0.67	0.40	0.69	0.59	0.32	0.25	0.35	0.25
24	0.85	0.43	0.82	0.73	0.37	0.26	0.42	0.27

In previous studies, high pressure drops have been reported for non-Newtonian fluids and handling flows between 227 and 2271 L/min, which was especially influenced by the rheological properties of the fluids, considering that they had a density higher than that of water (15). In a pilot plant, experiments were carried out for flows between 3.25 and 14 L/min, reporting proportionality between the pressure drop and the increase in volumetric flow; Similarly, they pointed out that the smaller the diameter of the pipe, the greater the loss of pressure due to friction, because there is a greater amount of fluid (water) in contact with the walls of the pipe (boundary layer), where the roughness is very important in determining such losses (16).

From the data obtained in the experience it can be noticed the similar behavior in all the fittings, where, as the flow increases the pressure drop also increases and this is due to the velocity factor related in both equations, being the T branch and the valve seat I the element who contribute the most to the pressure drop in the plant. In addition, the velocity is directly proportional to the flow (equation 3) as proportional to the pressure drop (equation 4):

$$Q = v * A \tag{3}$$

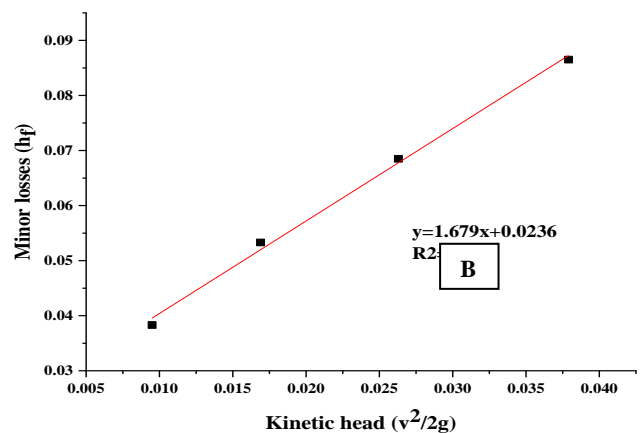
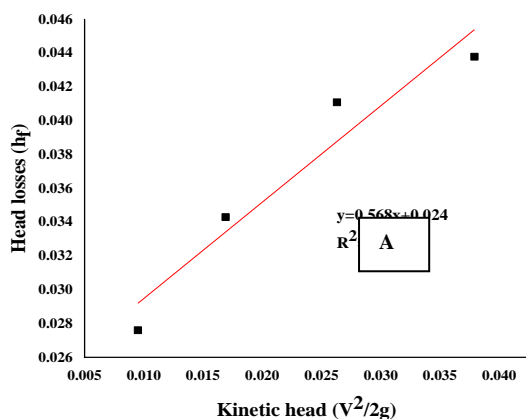
$$P = \frac{1}{2} \rho \Delta v^2 + \rho g \Delta h \tag{4}$$

Where: Q is flow; v is velocity; A is area of flow section; P is pressure; ρ is density; g is gravity.

With the values of Table 1 the minor losses were calculated (h_f) isolating from equation 1. From the area of the pipe (0.000464 m²) and flow rate, the kinetic head values are obtained with values of 0.0095, 0.0169, 0.0263, 0.0379 for the flow rates 12, 16, 20, 24 L/min, respectively.

Calculation of the coefficient of minor losses

Figure 3 represents the linear regression between the minor losses and the kinetic head for the fittings studied, using Excel in order to find the equation of the line and obtaining the value of the coefficient of minor losses K_f that fits to the data of the tests, where the data in blue points represent the experimental values and the black line represents the fit. These values represent the averages of all the determinations and, moreover, they are not restricted to the type of flow developed in the measurement; that is, they correspond to the entire profile obtained with the volumetric flows handled in the experiments for each one of these



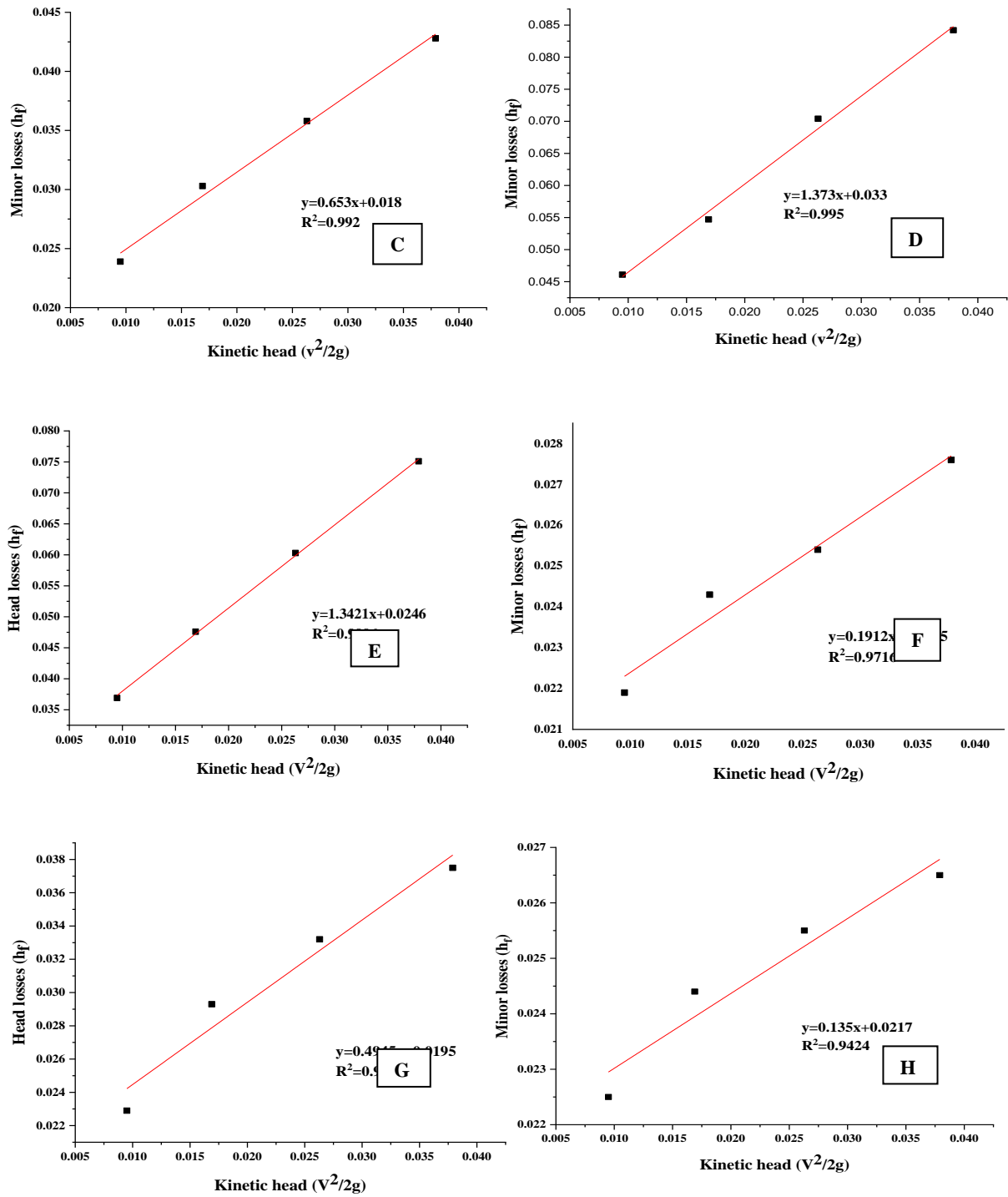


Figure 3. Minor losses [h_f] versus de kinetic head [$V^2/2g$] and K -coefficient.

The K_f values obtained and the R^2 values are shown below in table 2.

Table 2. Adjusted K_f values and R^2

Fittings	K_f obtained	R^2
Branch path T	1.676	0.996
Direct path T	0.568	0.931
90° elbow	1.370	0.994
Slanted Seat Valve	1.342	0.999
Branch path Y	0.491	0.958
Direct path Y	0.135	0.942
45° elbow	0.652	0.992
Ball valve	0.191	0.971

The results obtained in the present study for the K_f (Table 2) present a variation with respect to the literature of approximately 10.5%. These differences are attributed to the so-called mutual influence or resistance interference effect mentioned by Rabinovich for hydraulic systems. Said interference effect basically considers that the presence of nearby accessories causes alterations in the flow lines and consequently the friction factor increases. In addition, it must not be forgotten that most of the studies have been carried out using accessories placed respecting a free distance between them, and/or the losses are attributed to a single accessory. However, in most

material flow situations in the industry, the proximity of accessories is a reality; then, the interference effect should not be ignored. According to Rabinovich, the flow current regime is altered since the fluid approach conditions to each of the accessories are altered (15).

Calculation of the theoretical pressure drop

The adjusted K_f data were used in equation 2 for the calculation of the theoretical minor losses, theoretical h_f , then with equation 1 the theoretical pressure drop values for the four flows are obtained. Finally, the percentage error used in equation 5 is calculated.

$$\%Error = \left| \frac{Theoretical - Experimental}{Theoretical} \right| \times 100 \quad [5]$$

Table 3 summarizes the pressure drop and error data for each fitting, where it is possible to identify that the errors between the pressure drop measurement and the data calculated from the setting are close together. The range of error percentage values is between 0% and 8%, the lowest value being 0.04% for the branch path T-joint fitting and the highest being 8.16% corresponding to the direct path T-joint fitting. In addition, the error average is 2.58%

indicating the error percentage frequency below values of less than 2.41%.

Through Table 3 it is possible to corroborate the theory about the proportionality of the flow with the pressure drop, where the higher the flow the higher the pressure drop (8). This can be seen throughout the table regardless of the fitting and whether the data is experimental or theoretical, observing the same upward behavior as the flow rate rises.

Table 3. Experimental pressure drop, theoretical and percentage of error

Fitting	Pressure drop (KPa)	Flow (L/min)			
		12	16	20	24
Branch path T	Exp	0.37	0.52	0.67	0.85
	Theoretical	0.380	0.501	0.656	0.845
	% error	1.54%	4.09%	2.03%	0.04%
Direct path T	Exp	0.27	0.34	0.40	0.43
	Theoretical	0.277	0.318	0.371	0.435
	% error	2.62%	5.29%	8.16%	1.61%
90° elbow	Exp	0.45	0.53	0.69	0.82
	Theoretical	0.439	0.538	0.665	0.820
	% error	2.41%	0.76%	3.47%	0.25%
45° elbow	Exp	0.23	0.30	0.35	0.42
	Theoretical	0.236	0.283	0.344	0.417
	% error	1.35%	4.54%	1.89%	0.17%
Slanted Seat Valve	Exp	0.36	0.47	0.59	0.73
	Theoretical	0.359	0.455	0.580	0.731
	% error	0.37%	2.12%	1.63%	0.35%
Ball valve	Exp	0.21	0.24	0.25	0.27
	Theoretical	0.213	0.225	0.241	0.261
	% error	0.45%	5.49%	2.85%	3.34%
Branch path Y	Exp	0.22	0.29	0.32	0.37
	Theoretical	0.231	0.266	0.312	0.367
	% error	3.05%	7.35%	3.89%	0.39%
Direct path Y	Exp	0.22	0.24	0.25	0.26
	Theoretical	0.218	0.227	0.240	0.255
	% error	1.09%	4.69%	3.82%	1.52%

Also in Table 3 it is possible to identify the pressure drop of each fitting, indicating that the fittings with the highest pressure drop are the branch path T-joints (0.85KPa in flow 24 and 0.37KPa in flow 12) and 90° elbow (0.82KPa in flow 24 and 0.45KPa in flow 12), this is due to the location of both fittings in the equipment where the water flow makes an abrupt

movement of 90° compared to the direction of fluid entrance to the system, being subdued to an angular acceleration (17), and are the fittings with the highest loss ratios 1.67 and 1.37, respectively.

The Ball Valve, branch path Y-joint and direct path fittings have the lowest pressure drops with values for 24 L/min flow rate of 0.27,

0.37, 0.26 KPa respectively and for 12 L/min flow rate of 0.21, 0.22, 0.22 KPa, correspondingly. These fittings have the lowest K-coefficient values, 0.19 for the ball valve, 0.13 for the branch path Y-joint and 0.49 for the Y-direct path.

Comparison of the calculated K_f 's with those in the plant manual

The values of the coefficient of minor losses K_f obtained in this study were compared with the

data referenced in the work manual of the equipment used. Table 4 reflects the K_f values of the manual reported and the percentage of error with those of the study. For the fittings Slanted Seat Valve, Y direct path and Branch path there is no data reported. The highest error obtained is 95.71% for the 90° elbow fitting due to the high coefficient obtained from the adjustment and the lowest error value is for the branch path T-joint fitting 1.41% due to the closeness in the reported values.

Table 4. K_f value comparison with manual

Fittings	K_f obtained	Manual	
		K_f reported	% error
Branch path T	1.676	1.7	1.41%
Direct path T	0.568	0.5	13.60%
90° elbow	1.370	0.7	95.71%
Slanted Seat Valve	1.342	---	---
Branch path Y	0.491	---	---
Direct path Y	0.135	---	---
45° elbow	0.652	0.4	63.00%
Ball valve	0.191	0.18	6.11%

Comparison of K_f with other references

The comparison of the loss coefficients K_f obtained with other authors who report K_f values for the fittings branch path T-joint, T direct path, 90° elbow and 45° elbow was carried out. Table 5 reflects the reported values and the percentages obtained from the comparison of the coefficients. The highest percentage of error was found to be 98.6% for the 90° elbow, which is the highest percentage of error in the entire comparison. The low percentage is 21.4% for the branch path T-joint

because the value obtained is higher than the one reported by the author (9).

With regard to the Rotorpump company (18), of Argentina, the maximum error is 63% for the 45° elbow and the minimum value is 3.7% for the branch path T. And in the case of the Costa Rican legal information system (19), the 45° elbow is the fitting with the highest percentage of error with 91.8% and the 90° elbow the lowest with 4.6%, as reflected in table 5.

Table 5. Comparison of K_f with other authors

Fittings	K_f obtained	Mott		Rotorpump		Scij	
		K reported	% error	K reported	% error	K reported	% error
Branch path T	1.676	1.38	21.4%	1.74	3.7%	2.23	24.8%
Direct path T	0.568	0.46	23.5%	0.52	9.2%	0.91	37.6%
90° elbow	1.370	0.69	98.6%	0.92	48.9%	1.44	4.9%
45° elbow	0.652	0.37	77.2%	0.40	63.0%	0.34	91.8%

The comparisons made can also be reflected in the Figures shown below, which illustrate the ratio of minor losses to the kinetic head for fittings with coefficient reports. Figure 3 shows the graph of the behavior of the minor

losses and the kinetic head for the T-branch path fitting with respect to other authors. The values of minor losses obtained with the K_f coefficient are between the values reported in the Manual and Rotorpump; they are above Mott's result values and below SCIJ.

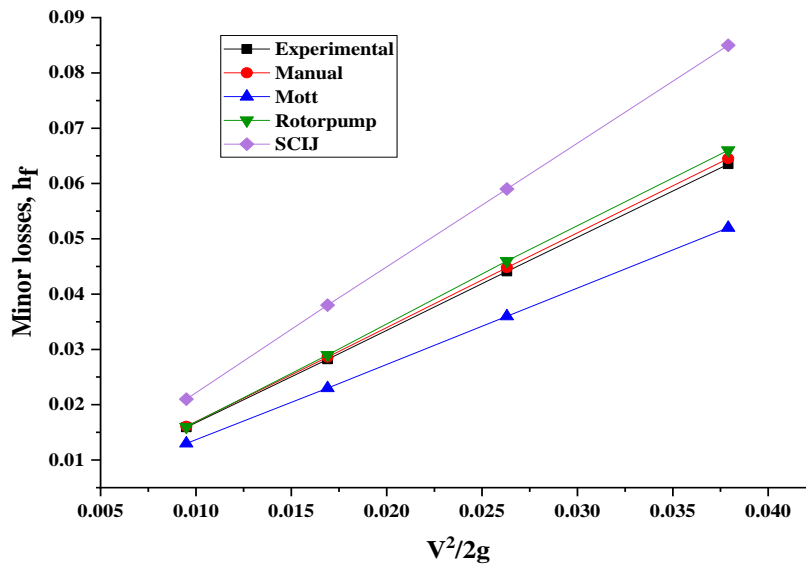


Figure 4. T-branch path

For the case of the direct path T-joint, Figure 4 represents the graph of the behavior of the minor losses with respect to other authors. The line of data obtained is close to the lines of the

Manual and Rotorpump. The Mott line is below and the SCIJ above all the lines obtained, reflecting that the percentage of error is higher for the reported coefficient.

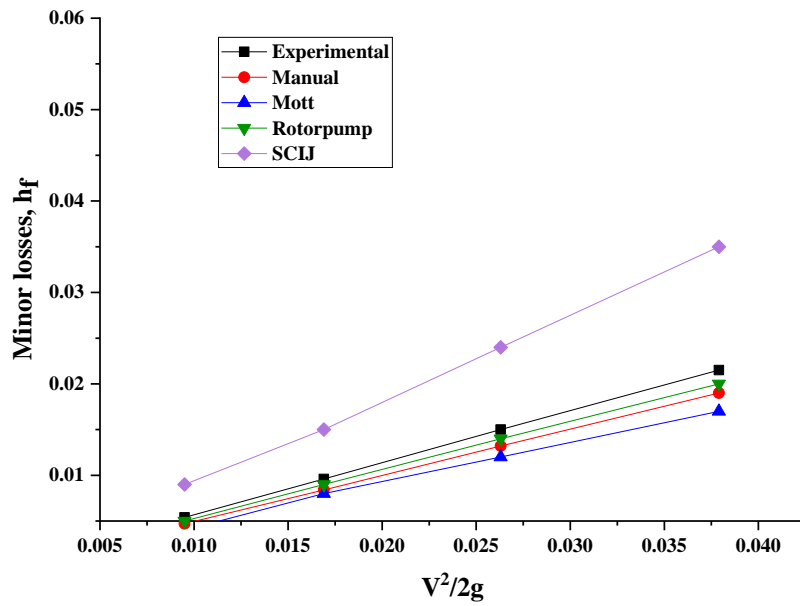


Figure 5. Direct path T

Figure 5 represents the graph for the Elbow 90° fitting with respect to other authors. The values obtained and those reported SGIJ are close to and above the other data. The Manual

and Mott data are close and farther away from others showing the closeness of the data and represent the biggest errors. The Rotorpump data are located at a midpoint.

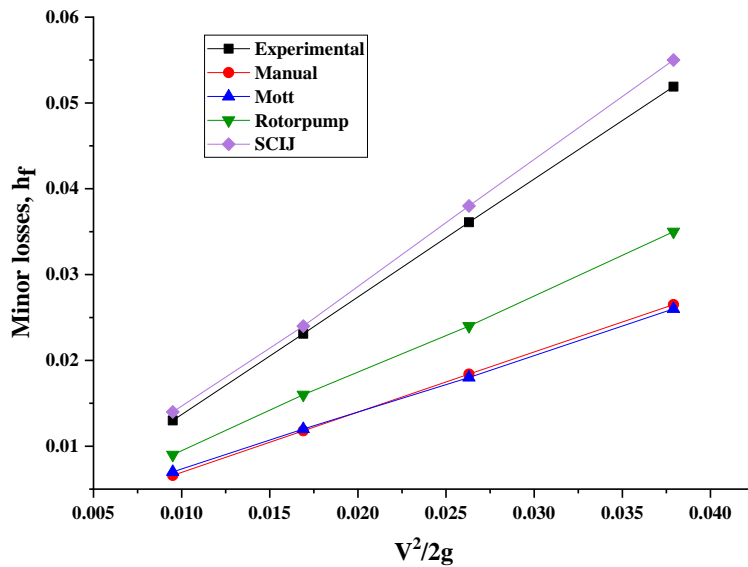


Figure 6. 90° elbow

Figure 7 represents the graph of the 45° Elbow fitting. The data lines from other studies are below the line obtained in this study showing

that the data of the loss coefficient K_f has a high value with respect to the other comparisons.

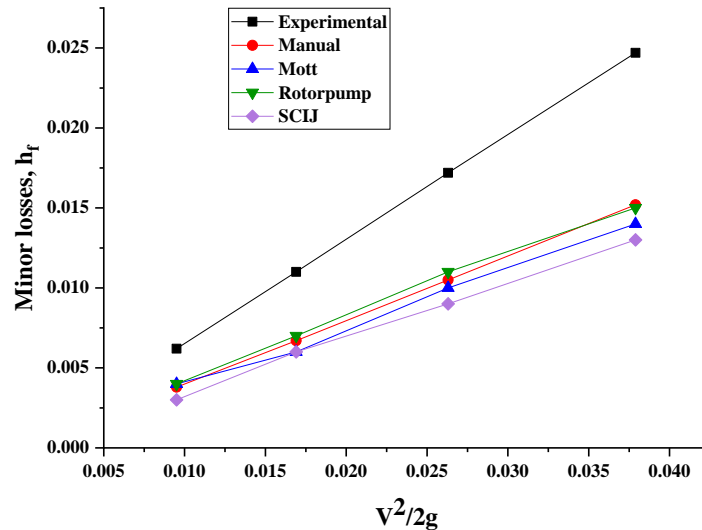


Figure 7. 45° elbow

Conclusions

The pressure drop in the FF-DF-270/EL unit of the G block at the University of Cartagena is directly proportional to the feeding flow supplied, in the same way the loss coefficient depends on each fitting in the pumping system, allowing the calculation of the theoretical pressure drop and comparing it with the real pressure drop obtaining average error

percentages of 2.58%. When comparing the coefficients obtained in this investigation with the design values, an average error percentage of 35.98% can be appreciated, observing a closeness of the data. Contrasting the values obtained with those reported in the literature, differences can be seen with RototPump of 31.2% and with Mott of 52.5%.

Acknowledgements

The authors are grateful to the University of Cartagena for providing the equipment,

materials and software that made it possible to successfully conclude this research.

References

- Anaya-Durand AI, Cauich-Segovia GI, Funabazama-Bárceñas O, Alfonso V. Evaluación de ecuaciones de factor de fricción explícito para tuberías. *Educ Química*. 2014;25(2):128–34.
- Tang M, Zhang S, Wang D, Liu Y, Wang L, Liu C. Experimental study and modeling development of pressure drop in concurrent gas-liquid columns with a tridimensional rotational flow sieve tray. *Chem Eng Sci* [Internet]. 2018;191:383–97. Available from: <https://doi.org/10.1016/j.ces.2018.06.080>
- Meti B, Sitaram N. Determination of Optimum Pressure Loss Coefficient and Flow Distribution at Unsymmetrical Pipe Trifurcation Using Experimental and Numerical Technique. *Appl Eng*. 2017;1(2):41–7.
- Romero-Chapa MA. Pérdidas menores de energía en redes de tuberías de agua potable [Internet]. Universidad Nacional Autónoma de México; 2013. Available from: [http://www.ptolomeo.unam.mx:8080/js-pui/bitstream/132.248.52.100/4135/1/TESIS PROBLEMAS EN LAS REDES DE ABASTECIMIENTO DE AGUA POTABLE.pdf](http://www.ptolomeo.unam.mx:8080/js-pui/bitstream/132.248.52.100/4135/1/TESIS%20PROBLEMAS%20EN%20LAS%20REDES%20DE%20ABASTECIMIENTO%20DE%20AGUA%20POTABLE.pdf)
- Zhou X, Wang Z, Zhang Y. A simple method for high-precision evaluation of valve flow coefficient by computational fluid dynamics simulation. *Adv Mech Eng*. 2017;9(7):1–7.
- Silva M, Yambombo Guanutaxi JG. Diseño y construcción de un banco de pruebas para ensayos de pérdidas de carga en tuberías y accesorios. Universidad Central del Ecuador; 2012.
- López-Cáceres LA, Yapez-Shiguango MP. Diseño e implementación de un laboratorio virtual para medir caída de presión y obtener datos en tiempo real usando LABVIEW y visual BASIC para mecánica de fluidos. Escuela Superior Politécnica de Chimborazo; 2015.
- Cengel Y, Cimbala J. *Mecánica de Fluidos: Fundamentos y aplicaciones*. 2nd Editio. México D.F.: McGraw-Hill; 2012.
- Mott R. *Mecanica de fluidos*. 7a. México D.F.: Addison-Wesley; 2015.
- Slatter PT, Fester VG. Fittings losses in paste flow design. *Proc Thirteen Int Semin Paste Thick Tailings*. 2010;303–10.
- Fester VG, Kabwe AM, Slatter PT. Diaphragm valve head loss coefficients for coarse particles transported in a non-Newtonian carrier fluid. *Proc 14th Int Semin Paste Thick Tailings, Aust Cent Geomech*. 2011;417–26.
- Flores JHN, Rettore Neto O, Faria LC, Timm LC. Estimation of the kinetic head coefficient (k) based on the geometric characteristics of emitter pipes 1. *J Brazilian Assoc Agric Eng*. 2017;4430(6):1091–102.
- Russi Russi DI. Determinación experimental del coeficiente de pérdidas menores y el comportamiento hidráulico de diferentes válvulas tipo cheque usadas en sistemas internos de distribución de agua potable [Internet]. 2015. Available from: <http://dx.doi.org/10.1016/j.irfa.2010.03.001><http://dx.doi.org/10.1016/j.ribaf.2014.06.001><http://www.iiste.org><http://dx.doi.org/10.1016/j.jbankfin.2011.10.012><http://www.econjournals.com><http://www.academicjournals.org/JAT>
- Monterroso López G. Coparación de pérdidas de presión entre válvulas comerciales de distinto material [Internet]. Universidad San Carlos de

- Guatemala; 2012. Available from: http://biblioteca.usac.edu.gt/tesis/08/08_3452_C.pdf
15. Bandala-Rocha MR, Macedo y Ramírez RC, Vélez-Ruiz JF. Evaluación de Coeficientes de Fricción en el Transporte de Fluidos No-Newtonianos. *Inf tecnológica*. 2005;16(2):73–80.
 16. Ganchozo Arévalo PJ, Monserrate Chamba HL. Diseño y construcción de una unidad didáctica de pérdidas de carga en el laboratorio de operaciones unitarias [Internet]. Universidad de Guayaquil. 2018. Available from: <http://link.springer.com/10.1007/978-3-319-76887-8>
<http://link.springer.com/10.1007/978-3-319-93594-2>
<http://dx.doi.org/10.1016/B978-0-12-409517-5.00007-3>
<http://dx.doi.org/10.1016/j.jff.2015.06.018>
<http://dx.doi.org/10.1038/s41559-019-0877-3>
 17. García Gutiérrez L. Teoría De La Medición De Caudales Y Volúmenes De Agua E Instrumental Necesario Disponible En El Mercado [Internet]. Medida y Evaluación De las Extracciones De Agua Subterránea. Madrid, España; 2012. 28–29 p. Available from: http://www.igme.es/igme/publica/libros_2_TH/art2/pdf/teoria.pdf
 18. Rotorpump. Rotorpump: Fricción en cañerías [Internet]. p. 1–2. Available from: <http://www.rotorpump.com/pdf/tabla-perdidas-por-friccion.pdf>
 19. Jurídica-SCIJ SC de I. Sistema de agua fría y caliente [Internet]. Available from: <http://www.pgrweb.go.cr/DOCS/NORMAS/1/VIGENTE/R/2010-2019/2015-2019/2017/14669/1153AA.HTML>