

# SSR-HRM molecular characterization of the Colombian cultivated germplasm of *Capsicum chinense* Jacq. (Solanaceae)

Caracterización molecular por SSR-HRM de germoplasma colombiano cultivado de *Capsicum chinense* Jacq. (Solanaceae)



JOSÉ ENRIQUE LÓPEZ-CANDELO<sup>1, 2</sup>  
RONALD ANDRÉS VIÁFARA-VEGA<sup>1, 2, 3</sup>  
HEIBER CÁRDENAS-HENAO<sup>1, 2</sup>

**Habanero pepper fruits.**

Photo: L.L. Arias

## ABSTRACT

This study was the first evaluation of the genetic diversity of cultivated populations of habanero pepper (*Capsicum chinense*) in Colombia using SSR-HRM. Three habanero pepper lines were characterized with eight microsatellite markers using the High-Resolution Melt (HRM) technique. Twenty-seven individuals from the HL-original line and 30 individuals each from derived lines HL-70 and HL67 were genotyped. Three microsatellites were monomorphic, and five were polymorphic; however, a high allelic diversity was detected in the homozygous state in the 87 individuals. The Ng8 marker differentiated the HL-original and HL-67 lines from the HL-70 line with HRM profiles. The analysis of molecular variance (AMOVA) revealed that 52% of the genetic variation existed within lines. The HL-67 line was more similar to the HL-original line than to the HL-70 line. HL-70 recorded the highest genetic diversity for the derived lines and, therefore, could be used in a new breeding program. In contrast, the HL-67 line, because of its high genetic homogeneity, could potentially be used to evaluate different environmental conditions to find optimal conditions that increase productivity and pungency. Finally, comparing the HRM profiles with the monomorphic markers (Ng 33, Ng 18 and Ng 10) differentiated the *C. chinense* and *C. frutescens* species, which was difficult because of high morphologic similarity between these two species and is usually evaluated at the flowering stage, while HRM profiles can be done at any plant stage.

<sup>1</sup> Universidad del Valle, Departamento de Biología, Grupo de Estudios Ecogenéticos y de Biología Molecular, Santiago de Cali (Colombia). ORCID López-Candelo, J.E.: 0000-0003-4062-4187; ORCID Viáfara-Vega, R.A.: 0000-0001-7213-273X; ORCID Cárdenas-Henao, H.: 0000-0003-2823-8443

<sup>2</sup> Universidad del Valle, Centro de Investigación e Innovación en Bioinformática (CIBioFi), Santiago de Cali (Colombia).

<sup>3</sup> Corresponding author: [ronald.viafara@correounivalle.edu.co](mailto:ronald.viafara@correounivalle.edu.co)

**Additional key words:** artificial selection; crop species identification and discrimination; crop genetic diversity; usefulness of single nucleotide polymorphisms.

## RESUMEN

Este estudio es la primera aproximación al conocimiento de la diversidad genética de poblaciones cultivadas de chile habanero (*Capsicum chinense*) en Colombia utilizando SSR-HRM. Se caracterizaron tres líneas de chile habanero con ocho marcadores microsátélites utilizando la técnica High-Resolution Melting (HRM). Veintisiete individuos de la línea original HL y 30 de cada línea derivada HL-70 y HL67 fueron genotipificados. Tres microsátélites resultaron monomórficos y cinco polimórficos; sin embargo, se detectó una alta diversidad alélica en el estado homocigoto en los 87 individuos evaluados. El marcador Ng8 diferenció las líneas HL-original y HL-67 de la línea HL-70 a través de sus perfiles de HRM. El análisis de varianza molecular (AMOVA) reveló que el 52% de la variación genética existía dentro de las líneas. La línea HL-67 fue más similar a la línea HL-original que a la línea HL-70, HL-70 registró la mayor diversidad genética con respecto a las líneas derivadas y, por lo tanto, podría ser considerada en un nuevo programa de mejoramiento. En contraste, la línea HL-67, debido a su alta homogeneidad genética, podría potencialmente utilizarse para evaluar diferentes condiciones ambientales en busca de condiciones óptimas para aumentar su productividad y picor. Finalmente, la comparación de los perfiles de HRM obtenidos con los marcadores monomórficos (Ng 33, Ng 18 y Ng 10) nos permitió diferenciar entre las especies *C. chinense* y *C. frutescens*, esta diferenciación es difícil debido a la alta similitud morfológica entre estas dos especies y generalmente se evalúa en la etapa de floración, mientras que los perfiles de HRM se pueden realizar en cualquier etapa de la planta.

**Palabras clave adicionales:** diversidad genética de cultivos; identificación y discriminación de especies cultivadas; diversidad genética de cultivos; utilidad de polimorfismos de nucleótido simple.

Received: 25-08-2021 Accepted: 23-02-2022 Published: 19-05-2022

## INTRODUCTION

The genus *Capsicum*, commonly known as chili peppers, is part of the Solanaceae family and comprises more than 40 species of peppers (Barboza *et al.*, 2020). Five of these species are domesticated (*C. annum* L., *C. frutescens* L., *C. chinense* Jacq., *C. baccatum* L. (var. *pendulum*), and *C. pubescens* Ruiz & Pav). Based on phenotypic descriptors, these peppers species have been classified by flower morphology (shape, size, among others) and fruit variability (sizes, colors, shapes, degree of maturity, and pungency). Pepper fruits are consumed worldwide and have global economic importance because of their richness in vitamins (A, C, and B6), antioxidants,  $\beta$ -carotenes, flavonoids, anticancer agents, antimicrobials, pigments, flavorings, carotenoid oils, oleoresins, and alkaloids with insecticidal potential (Wahyuni *et al.*, 2011).

In Colombia, the habanero pepper (*C. chinense*) is traditionally grown by small farmers but also

commercially by big farms. More than 420 ha are distributed in the Valle del Cauca, Santander, and the Caribbean region, producing approximately 6,000 t of fruit for local consumption and export (Estrada and Baena, 2012). To meet domestic demands, crop improvement methods have been applied based on traditional selection (using phenotypic characteristics) to detect individuals with agronomic characteristics such as increased production, resistance to pests, and other environmental factors (Silva, 2011).

Ideally, the starting point for genetic improvement plans is determining the genetic diversity of the studied species, which elucidates the sufficient diversity for carrying out an artificial selection process (Ramírez *et al.*, 2006). Unfortunately, in Colombia, there is a lack of genetic information on the cultivated habanero germplasm that impedes proper genetic improvement and conservation.

In general, the genetic diversity of plant populations can be estimated with morphological characteristics; however, they are strongly influenced by the environment: soil nutrition, parasites, viruses, and climatic adversities, among other factors. Thus, molecular markers have become the main tools for analyzing, assessing, and understanding plant genetic diversity (Tanksley, 1983). Markers characterized by tandem repeats, microsatellites or simple sequence repeats (SSR) are successfully used because of a high degree of polymorphism, high reproducibility, stability, ease of handling, codominant inheritance, and multiallelism (Nicolai *et al.*, 2013).

The detection and identification of microsatellites in genotyping studies can be performed with different approaches, such as capillary electrophoresis, gel electrophoresis, and high-resolution dissociation curves, a technique known as High Resolution Melting (HRM) (Lee *et al.*, 2016). In contrast to the other visualization methods for microsatellites, HRM is an RT-PCR technique that separates DNA molecules based on their composition and length, distinguishing changes in up to one nucleotide, as detected by differences in fluorescence with increasing temperature, allowing the genotyping and identification of individuals and populations (Xanthopoulou *et al.*, 2014).

In Colombia, Hugo Restrepo and Cía and the Universidad Nacional de Colombia, Palmira campus, made an individual selection program from various commercial Habanero peppers available on the market. They were searching for high fruit productivity (kg per plant). As a result, they obtained two derived lines (HL-67 and HL-70). These derived lines and their original counterpart form part of the seedbank used for production (Estrada and Baena, 2012). However, it remains unknown whether there is enough genetic variability in these lines to perform another selection program to find a high level of pungency and molecular markers that accurately discriminate between lines and species.

This research estimated the genetic diversity within three lines in this bank, and the genetic differentiation with microsatellite markers was visualized using the HRM technique. This study provided a foundation for the conservation and future harnessing of these genetic material.

## MATERIALS AND METHODS

### Plant materials

Three Habanero pepper (*C. chinense*) lines in the seedbank of Hugo Restrepo and Cía were studied. One corresponded to an original Habanero pepper line (HL-original). The other two lines (HL-67 and HL-70) were derived by selection. Thirty seeds were chosen at random from each of the lines and were germinated in seedbeds for 35 days until 1 g of fresh foliar tissue was obtained. Subsequently, the tissue was placed in hermetic bags with silica gel as a moisture indicator (hydrous forms pink-colored, and anhydrous forms blue-colored) to dry and preserve it. The germination process was done at the experimental station at the Universidad del Valle, Cali.

### DNA extraction

All molecular biology work (DNA extraction and genotyping) was done in the “Laboratorio de Biología Molecular” at the Universidad del Valle, Cali. DNA was extracted with the CTAB method of Doyle and Doyle (1987) with the modifications described by Stewart (1993). The DNA was dissolved in 500  $\mu\text{L}$  of LowTE and stored at  $-20^{\circ}\text{C}$ . For three individuals in the HL-original group, it was not possible to extract DNA, so the final number of samples was 87.

The total DNA was quantified for the 87 samples using a NanoDrop™ 2000/2000c spectrophotometer to determine the DNA concentration and quality (260/280 and 260/230). Then, it was diluted to a concentration of 10  $\text{ng } \mu\text{L}^{-1}$  for use in the laboratory.

### Genotyping SSR by HRM

Three of the microsatellites reported by Lee *et al.* (2004) were used, which were referred to as Bd, along with the five reported by Nagy *et al.* (2007), which were referred to as Ng, following the nomenclature proposed by Guzmán (2007), for a total of eight markers (Tab. 1).

The reactions were performed using the Bio-Rad CFX96 Real-Time System. For each HRM reaction, 5  $\mu\text{L}$  of 2X Precision Melt Supermix reagent, 0.7  $\mu\text{M}$  of each primer (forward and reverse), 35 ng of DNA,

**Table 1. Microsatellites used for genotyping in *C. chinense* using the HRM technique, with their respective average melting point temperatures.**

Name	Locus	Melting point temperature (°C)
Ng4	CA515275	76.80
Ng8	CA516044	81.80
Ng10	CA516334	84.30
Ng18	CA517699	73.40
Ng33	CA516439	78.00
Bd12	Hpms1-139	78.20
Bd17	Hpms1-165	77.20
Bd22	Hpms1-214	78.29

and 0.1  $\mu$ L of distilled and deionized water were used in a total volume of 10  $\mu$ L. The HRM analysis started with denaturation at 95°C for 5 min, followed by 60°C for 1 min, 65°C for 30 s, and finally a temperature increases of 0.2°C for 10 s up to 95°C, where the change in fluorescence was recorded.

### Data analysis

The different curve profiles obtained with the HRM technique were recorded using Precision Melt Analysis™ software v1.2. Each profile was identified as a genotype. Afterwards, all profiles obtained for the three *C. chinense* lines were compiled, an allelic matrix was constructed for each of the markers, and the parameters of diversity between the lines were calculated, such as the observed heterozygosity (Ho) and expected heterozygosity (He) (Crow and Kimura, 1970), number of alleles present, unique alleles, and number of haplotypes (genetic profiles). The Nei (1972) and Shannon-Wiener's genetic diversity indices (Shannon, 1948) were used. The polymorphic information content (PIC) was also calculated for the three lines according to Botstein *et al.*, (1980). These statistics were performed using GenAlex software version 6.503 (Peakall and Smouse, 2012).

Wright's F-statistics were used to calculate the genetic differentiation of the *C. chinense* lines (HL-original, HL-67 and HL-70). Finally, a dendrogram was constructed using UPGMA with the paired FST's to observe the differentiation between the three lines.

Genetic similarity analysis of the allelic matrix was performed using the Nei (1972) coefficient to perform

all pairs of genotype comparisons. Finally, analysis of molecular variance (AMOVA) was performed to decompose the total genetic variance using Arlequin Version 3.5 (Excoffier and Lischer, 2010) with three levels: between lines, between individuals within lines, and individuals.

## RESULTS AND DISCUSSION

Three microsatellites were monomorphic, and five were polymorphic. PIC values are presented in table 2.

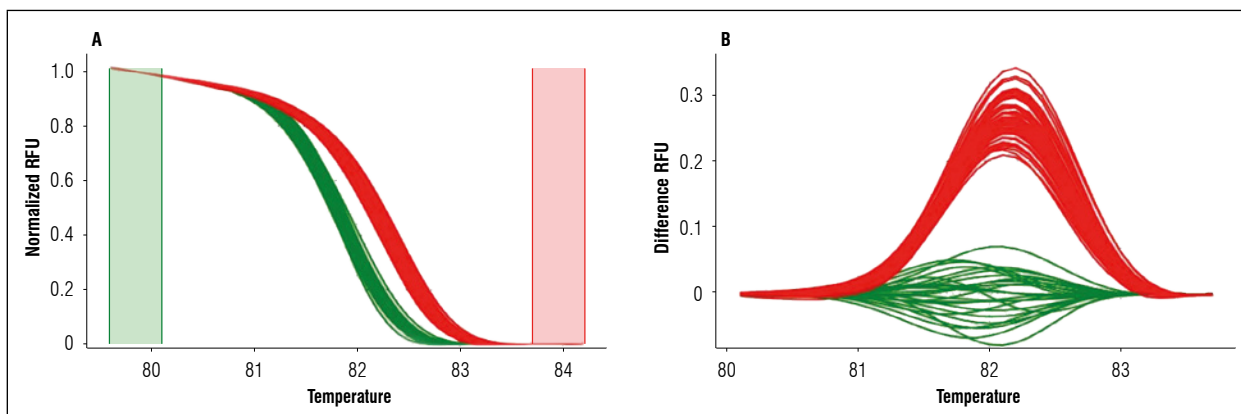
**Table 2. Informativeness parameters for the eight microsatellites utilized in this study with number of alleles (Na), Effective Number of Alleles (ENA) and PIC (Polymorphic Information Content).**

Marker	Number of alleles	Effective number of alleles	PIC
Bd17	9	1.66	0.71
Bd 22	2	1.07	0.18
Ng 4	5	1.93	0.67
Ng 8	3	1.83	0.38
Ng 10	1	1.00	0.00
Ng 18	1	1.00	0.00
Ng 33	1	1.00	0.00
Bd 12	4	1.74	0.43

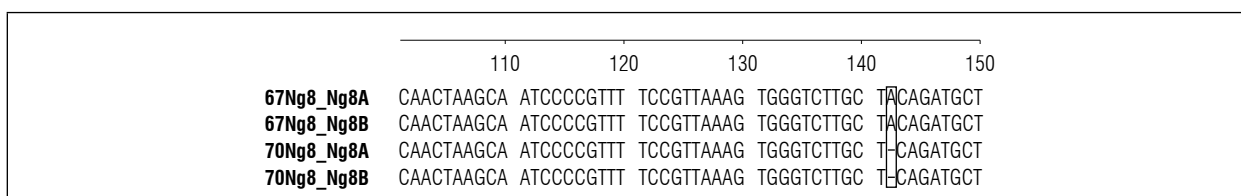
The Ng8 microsatellite differentiated the HL-70 individuals from the HL-67 and HL-original individuals (Fig. 1). Differences were observed in both the shape of the curve and the melting point. The genotype in HL-original and HL-67 (red curves in Fig. 1) had a melting point of 82.20°C, while the genotype found only in HL-70 (green curves in Fig. 1) had a melting point of 81.20°C.

Sanger sequencing was performed for the Ng8 marker for two individuals from HL-70 and HL-67 to specify the differences in the clusters obtained in HRM. The results showed that the HL-70 line carried a deletion of one nucleotide in position 142, while the HL-67 and HL-original lines had one adenine inserted in this position (Fig. 2).

The analysis of the genetic diversity of the five polymorphic loci revealed differences in the number of haplotypes: 20 for HL-original, 10 for HL-70, and 5 for HL-67 (Tab. 2). The Shannon-Wiener index (Shannon, 1949) value showed that the most diverse line was HL-original, followed by HL-67 and HL-70 (Tab. 3).



**Figure 1.** HRM analysis for microsatellite Ng 8 in *C. chinense* lines. **A**, normalized melting curves (normalized RFU vs. temperature (°C)); **B**, differentiation curves (difference RFU vs. temperature (°C)). Red curves represent genotype one present in the HL-original and HL-67 lines, while green represent genotype 2 in the HL-70 line.



**Figure 2.** The sequence of lines (67 and 70) of *C. chinense* (two individuals for lines A and B) with Ng8 marker. -The square shows the indel identified in position 142.

**Table 3.** Genetic parameters generated by the five SSR markers on three *C. chinense* lines. Ho: observed heterozygosity, He: expected heterozygosity.

<i>C. chinense</i> lines	Locus	Number of alleles	Ho	He	Number of haplotypes	Shannon-Wiener index
HL-original	Ng4	5	0.00	0.64	20	0.55
	Ng8	1	0.00	0.00		
	Bd12	3	0.00	0.50		
	Bd22	2	0.00	0.07		
	Bd17	9	0.00	0.78		
HL-67	Ng4	2	0.00	0.07	5	0.22
	Ng8	1	0.00	0.00		
	Bd12	3	0.00	0.53		
	Bd17	1	0.00	0.00		
	Bd22	2	0.00	0.07		
HL-70	Ng4	2	0.00	0.14	10	0.18
	Ng8	2	0.00	0.18		
	Bd12	3	0.00	0.13		
	Bd17	5	0.00	0.25		
	Bd22	2	0.00	0.13		

Since the Ng8 marker detected differences among the evaluated lines, the objective was to observe its effect on the variation between and within lines through two analyses of variance, one including it and another excluding it. Upon inclusion of Ng8, the most significant variation was found within lines, followed by between lines and, finally, null variation within individuals. Upon excluding Ng8, the variation within lines increased to 0.71, while between lines, it decreased to 0.29 (Tab. 4). In contrast, Wright's F-statistics determined the level of inbreeding within lines (FIS) and total inbreeding (FIT), both of which had a value of 1. In FST, the degree of differentiation between lines had a value of 0.48.

The dendrograms constructed with UPGMA based on FST pairs, including Ng8, revealed less differentiation between lines HL-67 and HL-original than line HL-70 (Fig. 3A). In contrast, exclusion of the Ng8 marker from the analysis showed the opposite effect, in which there was less differentiation between lines HL-67 and HL-70 than the HL-original (Fig. 3B).

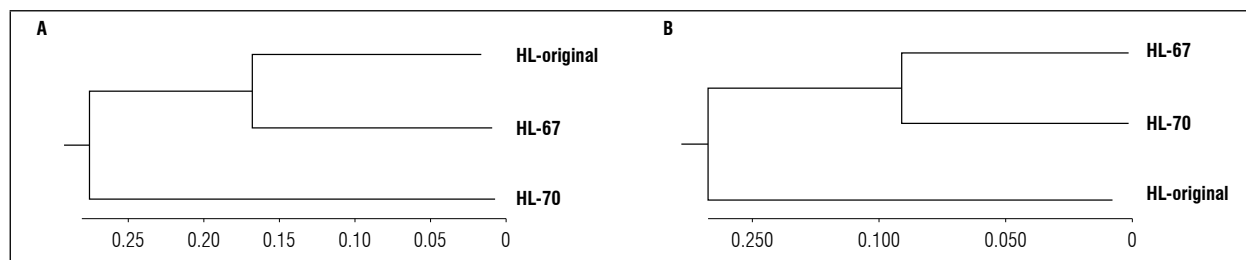
Similarity analysis was performed based on the genetic distances calculated using Nei's (1972) similarity coefficient, including and excluding the Ng8 marker, as shown in figure 4A and 4B. The genetic diversity estimated in the original line was more significantly similar to HL-67 than to HL-70.

**Table 4. Analysis of molecular variance in three lines of *C. chinense*.**

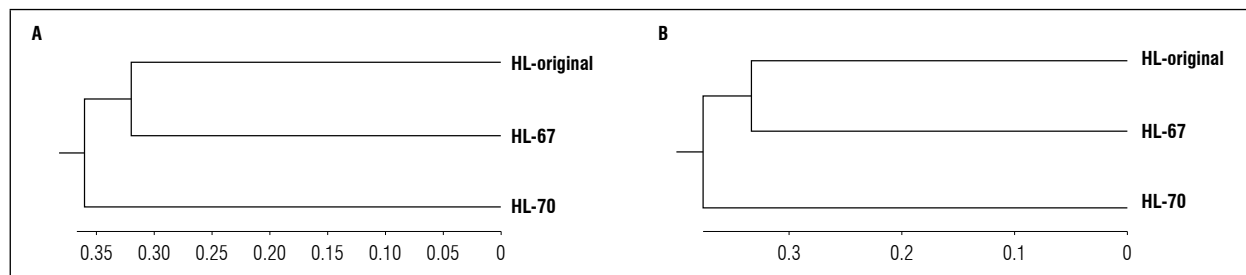
Source of variation	Sum of squares	Variance components	Percentage of variation	Including Ng 8		Excluding Ng 8	
				Sum of squares	Variance components	Sum of squares	Variance components
Between lines	62117	0.520	48.0*	26405	0.21	29.0*	
Within lines between individuals	93935	0.570	52.0*	86400	0.51	71.0*	
Within individuals	0	0.000	0.0*	0	0.00	0.0	
Total	156053	109.102		112805	0.72		

The Ng8 marker was included in the first analysis and excluded in the second one.

\*The percentages of variation were significant,  $P < 0.05$ .



**Figure 3. UPGMA dendrogram based on paired  $F_{ST}$  of lines HL-original, HL-67, and HL-70. A) Including of the Ng8 marker. B) Excluding of the Ng8 marker.**



**Figure 4. UPGMA dendrogram based on Nei's (1972) similarity coefficient between lines HL-original, HL-67, and HL-70. A) Inclusion of the Ng8 marker demonstrated a higher similarity between HL-original and HL-67 and a lower similarity between HL-70 and the two lines evaluated. B) Exclusion of the Ng8 marker revealed no differences in the position and order of the lines.**

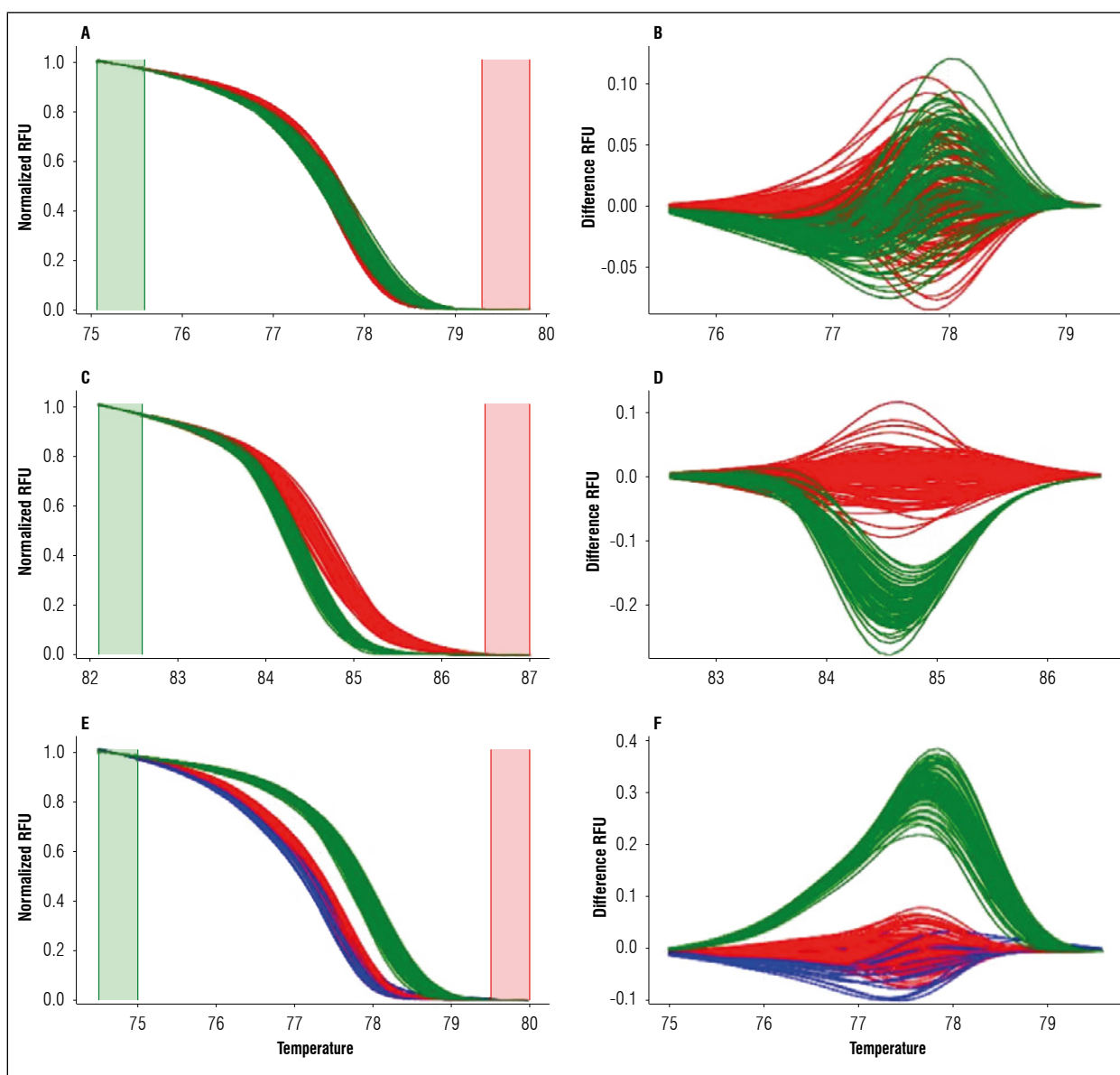
Finally, the *C. chinense* genotypes detected with the Ng10, Ng18, and Ng33 markers were compared with some from *C. frutescens* individuals. The comparison differentiated these two *Capsicum* species (Fig. 5).

## DISCUSSION

### Genetic diversity and population structure

This study was the first to address the genetic diversity estimated with microsatellites using the HRM

technique in the cultivated germplasm of *C. chinense* in the Valle del Cauca Department. The microsatellites Ng10, Ng18, and Ng33 were monomorphic, while the marker Bd22, according to the classification of Botstein *et al.* (1980), was slightly polymorphic, with a PIC = 0.18 (Tab. 2). Guzmán *et al.* (2020) worked with the same markers in a germplasm bank of *Capsicum* spp. and found high PIC values in wild populations of *C. chinense*. The low PIC values obtained for the evaluated lines can be explained by the genetic diversity reduction caused by the selection



**Figure 5.** Discrimination between *C. chinense* (red curves) and *C. frutescens* (green and blue curves) species by SSR-HRM analysis. Left images (A, C and E): normalized curve. Right images (B, D and F): difference curve. A-B: Ng 33 marker, C-D: Ng 10 marker and E-F: Ng 18 marker.

process used in this plant material, as evidenced by the allelic reduction of the derived lines HL-70 and HL-67 (Tab. 3). Similar results were found by Marcos-Pérez *et al.* (2013) and Rivera *et al.* (2016) in *C. annuum* Spanish populations.

The Ng4, Ng8, Bd12, and Bd17 markers were polymorphic (Tab. 2); nonetheless, they reduced allelic richness because of selection and genetic drift. According to Botstein *et al.*, (1980), Bd17 (PIC=0.70) and Ng4 (PIC=0.62) were highly informative, and Bd12 (PIC=0.43) and Ng8 (PIC=0.38) were moderately informative. Remarkably, the polymorphism obtained for Ng8 differentiated HL-70 from HL-original and HL-67 because of two unique genotypes present in HL-70 (Fig. 1). Thus, this marker is proposed for identifying the HL-70 line. The Bd17 and Ng8 markers are proposed for identifying the HL-67 line. Despite having the highest PIC index, Bd17 was monomorphic in this line. Consequently, by combining these results with those obtained for the Ng8 marker, individuals belonging to this line can be successfully identified.

According to Wright's classification, the average differentiation between lines ( $F_{ST} = 0.48$ ) was high, compared to the  $F_{ST}$  obtained in natural populations of *C. chinense*. A study conducted by Contreras-Toledo *et al.*, (2011) obtained  $F_{ST}$  values between 0.10 and 0.17, as explained by the effect of gene flow between the five evaluated populations. The opposite occurred for the three lines in the present research, where the gene flow was very restricted. Therefore, the effect of genetic diversity homogenization between lines was diminished, and their differentiation was promoted, conserving the genetic integrity as proposed by Wright's Island model (Wright, 1931; Estrada and Baena, 2012).

In the dendrogram based on paired  $F_{ST}$ , including Ng8, the genetic distance between lines HL-original and HL-67 was 0.17 and 0.26 between HL-original and HL-70 pair (Fig. 2A), which is congruent with the Nei (1972) similarity coefficients (Fig. 4A). This result can be explained by the number of polymorphic loci of the HL-67 line (Tab. 3).

When excluding Ng8 (Fig. 3B), the differentiation between lines decreased from 48% ( $P < 0.01$ ) to 29% ( $P < 0.01$ ) (Tab. 3), which enhanced the estimation of its effect on variation between and within lines. The Ng8 marker was monomorphic for the HL-original and HL-67 lines; nonetheless, it differentiated them

from the HL-70 line (Fig. 1). In addition, Ng 8 caused little differentiation between the HL-original and HL-67 lines, which share the same genotype. Therefore, there was less differentiation between them following its exclusion from the derivative lines HL-67 and HL-70 (Fig. 3B). This result can be explained by the selection for increased productivity.

In contrast, the variation within lines increased from 52 to 71% (Tab. 4) because of the effect of the Ng8 marker, which defined the similarity between monomorphic haplotypes with only one allele in the lines HL-original and HL-67 lines. In the HL-70 line, Ng8 was slightly polymorphic (Botstein *et al.*, 1980), as evidenced in the Nei (1972) dendrogram (Fig. 4A). When excluding this marker from the Nei (1972) similarity dendrogram (Fig. 4B), there were no changes in the position of the evaluated lines because the Nei (1972) similarity analysis algorithms are based on absence presence scores, ignoring the characteristic's state. Therefore, the effect of Ng8 on differentiating the HL-original, HL-67 and HL70 lines was inconspicuous.

The lines had excess homozygotes (Tab. 3), as found in studies and analyses carried out by Lee *et al.* (2016) using 48 single nucleotide polymorphisms (SNPs) and the HRM technique. These authors found a heterozygosity of 0.11 in 105 *C. chinense* individuals. These results are also similar to those obtained by González-Pérez *et al.* (2014), who evaluated the population structure of several *Capsicum* species, including *C. chinense* in the germplasm bank of Zaragoza, Spain, using 39 microsatellites and capillary electrophoresis and obtained a  $H_o = 0.12$ . Another study conducted by Zhang *et al.* (2016) on 388 *Capsicum* spp. individuals from a germplasm bank in China using microsatellites with capillary electrophoresis found  $H_o$  values between 0.13 and 0.15 for *C. annuum*. These values are very similar to the  $H_o = 0.12$  found by Lee *et al.* (2016) using HRM in 3383 *C. annuum* individuals.

These studies confirmed that  $H_o$  levels do not depend on the technique and may be due to the autogamous reproduction of the *Capsicum* species. Some authors have claimed that autogamy levels range from 0.90 to 0.95 (Odland and Porter, 1941, Justino *et al.*, 2018), which explains the few heterozygotes detected in these studies. The heterozygosity of 0% for all loci evaluated in the three lines was also found by Yumnam *et al.* (2012) using 56 *Capsicum* individuals from eight Indian wild populations and 24 SSR loci. Half



of the loci presented a  $H_o = 0$ , which was justified by the high degree of autogamy in the evaluated lines.

In the three lines studied here, cross-fertilization among individuals was avoided to preserve the genetic integrity of the selected lines (Estrada and Baena, 2012), clarifying the absence of heterozygotes or their low detection frequency with a sample size of 30 individuals. Therefore, autogamy could explain the AMOVA results, showing the most significant genetic variation component within the lines (52%) (Tab. 4). Similarly, Oyama *et al.* (2006) estimated the genetic diversity of *C. annuum* domesticated lines in 3 Mexican localities using microsatellites, and their results revealed that the most significant components of variation were within populations (51%). Consequently, these results could explain the high genetic diversity and variability of homozygotes despite autogamy. Hence, the three lines studied here were formed by different genetic profiles (haplotypes), which explained the distinct haplotypes in the HL-original, HL-67, and HL-70 lines, 20, 5, and 10, respectively (Tab. 3).

### Conservation and plant breeding aspects

These results showed that it is possible to develop a selection program within the lines to take advantage of the genetic variation in the three evaluated lines. Because of its high diversity, the HL-original line might be still helpful to build new lines for increased production and pathogen resistance; hence, it should be conserved in the company's germplasm bank. HL-70 presented half of the haplotypic diversity of HL-original and high allelic variability; thus, it could increase pungency. In contrast, HL-67 had lower allelic and haplotype diversity than the other lines (Tab. 3). Thus, it was not feasible to continue increasing production or another interest variable because this line only presented three of the five polymorphic loci, representing the line with the most outstanding genetic homogeneity. As the most genetically homogeneous line, it could be used evaluate different environmental conditions to determine the optimum environment for achieving optimal productivity.

Usually, observed heterozygosity is used to estimate the genetic diversity of a population/line when co-dominant markers are used since  $H_o$  may represent the maximum genetic variability available in a population, which is helpful in breeding or conservation programs. However, if the studied species presents

high levels of autogamy, the use of  $H_o$  can underestimate the genetic diversity of a population since self-pollination lowers heterozygosity levels and then genetic diversity tends to remain in different kinds of homozygotes instead of the heterozygote individuals (Falconer and Mackay, 2006). Therefore, the use of other estimators such as expected heterozygosity or number of haplotypes is recommended to accurately estimate the genetic diversity of crops with high autogamy levels, as done with the *Capsicum* lines.

### Discrimination between habanero lines

The absence of the one allelic variant in the HL-original might have two explanations. First, a founder effect was due to selection process, where the allelic variant found in HL70 was less frequent in HL-original because of the small sample size, which indicated that allelic variant 1 (Fig. 1) was the most frequent. Similarly, the selection process caused a bottleneck that reduced allelic diversity through a founder effect and led to the increased allelic frequency observed in HL-70.

The second explanation might be that the HL-70 line developed a *de novo* mutation at this allelic difference. Based on the sequencing results, the differentiation was caused by the presence and absence of one nucleotide in the HL-original, HL-67 and HL-70 lines; however, it is unlikely that it occurred simultaneously in several individuals during the selection of the derived lines.

In any case, this result is valuable because discrimination between lines is helpful in a breeding program that aims to easily identify an improved line, is fast and is relatively low-cost.

### Discrimination between *C. frutescens* and *C. chinense* species

Alleles detected with markers Ng10, Ng18, and Ng33 in the three lines were compared with the *C. frutescens* studied by Viafara-Vega and Cárdenas-Henao (2018), demonstrating that they differentiated *C. chinense* from *C. frutescens* (Fig. 5). These findings have not been previously reported. In the case of Ng10 and Ng18, they had several repetitions that detected differences based on discrepancies between the curve shape, the melting temperature, and polyacrylamide gels. For Ng 33, the differences between the two

Capsicum species may have been due to few nucleotide bases because the polyacrylamide profiles were similar. The variability of these three markers and the resolution of the HRM technique could facilitate molecular discrimination of the two species, complementing the morphological attributes used by the private company Hugo Restrepo y Cía and discriminating at any plant stage, even in sprouts, because DNA extraction for the SSR-HRM analysis requires a small amount of leaf tissue.

## CONCLUSION

The genetic diversity analysis presented relevant results using microsatellite markers with the HRM technique. Markers Ng4, Bd12, and Bd17 are ideal for studying and estimating the genetic diversity of *C. chinense* populations because of their high PIC values. Bd17 and Ng8 were used to recognize the HL-67 line; additionally, Ng8 was used to identify the HL-70 line because it detected two unique alleles in the evaluated individuals. The *C. chinense* lines had high levels of autogamy, conserving genetic diversity based on homozygotes. The AMOVA results for the within-line variation showed that the HL-70 line could continue to be pressured by selection to increase productivity because of the genetic variation estimated between the individuals. However, based on the allelic diversity observed for HL-original, its use is proposed to develop selection methods and achieve new improved lines. For the high genetic homogeneity of line HL-67, evaluations of different environmental conditions are proposed to determine optimum conditions that maximize production. Finally, the three markers (Ng10, Ng18, and Ng33) could facilitate routine molecular identification of the species *C. chinense* and *C. frutescens* for Hugo Restrepo and Cía.

**Conflict of interests:** The manuscript was prepared and reviewed with the participation of the authors, who declare that there exists no conflict of interest that puts at risk the validity of the presented results.

## Acknowledgments

This work was supported by Fondo CTeI-Sistema General de Regalías ((Colombian Science, Technology and Innovation Fund-General Royalties System, contract BPIN 2013000100007) and Centre for Bioinformatics and Photonics, CIBioFi. We thank the private company Hugo Restrepo and Cía. for their

management in the delivering of the individuals evaluated for each line. We are grateful to Nelson Toro Perea for allowing the performing of the entire experiment and analysis in the Molecular Biological Laboratory. We express our gratitude to Mauricio Peñuela for his advice in writing the manuscript, and to Alexander Ramírez for his support and advice concerning the experimental phase. Finally, we thank the anonymous reviewers for their valuable comments and suggestions to this paper.

## BIBLIOGRAPHIC REFERENCES

- Barboza, G.E., C. Carrizo García, M. Scaldaferrro, and L. Bohs. 2020. An amazing new *Capsicum* (Solanaceae) species from the Andean-Amazonian Piedmont. *PhytoKeys* 167, 13-29. Doi: <https://doi.org/10.3897/phytokeys.167.57751>
- Botstein, D., R.L. White, M. Skolnick, and R.W. Davis. 1980. Construction of a genetic linkage map in man using restriction fragment length polymorphisms. *Am. J. Hum. Genet.* 32(3), 314-331.
- Contreras-Toledo, A.R., H. López-Sánchez, A. Santacruz-Varela, E. Valadez-Moctezuma, V.H. Aguilar-Rincón, T. Corona-Torres, and P.A. López. 2011. Diversidad genética en México de variedades nativas de Chile 'poblano' mediante microsatélites. *Rev. Fitotec. Mex.* 34(4), 225-232. Doi: <https://doi.org/10.35196/rfm.2011.4.225>
- Crow, J. F. and M. Kimura. 2009. An introduction to population genetics theory. Blackburn Press, Caldwell, NJ.
- Doyle, J.J. and J.L. Doyle. 1987. A rapid DNA isolation procedure for small quantities of fresh leaf tissue. *Phytochem. Bull.* 19(1), 11-15. Doi: [https://doi.org/10.1007/978-3-642-60441-6\\_4](https://doi.org/10.1007/978-3-642-60441-6_4)
- Estrada, S. and R. Baena. 2012. Mejoramiento de la productividad del ají, cultivares Cayena, Tabasco y Habanero, mediante la estabilización genética y fenotípica de un núcleo de semillas fundamental. Universidad Nacional de Colombia, Palmira, Bogota.
- Excoffier, L. and H.E.L. Lischer. 2010. Arlequin Suite ver 3.5: a new series of programs to perform population genetics analyses under Linux and Windows. *Mol. Ecol. Resour.* 10(3), 564-567. Doi: <https://doi.org/10.1111/j.1755-0998.2010.02847.x>
- Falconer, D.S. and T.F.C. Mackay. 2001. Introducción a la genética cuantitativa. Editorial Acribia, Zaragoza, Spain.
- González-Pérez, S., A. Garcés-Claver, C. Mallor, L.E. Sáenz de Miera, O. Fayos, F. Pomar, F. Merino, and C. Silvar. 2014. New insights into *Capsicum* spp relatedness and the diversification process of *Capsicum annuum* in Spain. *PloS ONE* 9(12), e116276. Doi: <https://doi.org/10.1371/journal.pone.0116276>

- Guzmán, F.A., S. Moore, M. Carmen de Vicente, and M.M. Jahn. 2020. Microsatellites to enhance characterization, conservation and breeding value of *Capsicum* germplasm. *Genet. Resour. Crop Evol.* 67(3), 569-585. Doi: <https://doi.org/10.1007/s10722-019-00801-w>
- Justino, E.V., M.E.N. Fonseca, M.E. Ferreira, L.S. Boiteux, P.P. Silva, and W.M. Nascimento. 2018. Estimate of natural cross-pollination rate of *Capsicum annuum* using a codominant molecular marker associated with fruit pungency. *Genet. Mol. Res.* 17(1), gmr16039887. Doi: <https://doi.org/10.4238/gmr16039887>
- Lee, J.M., S.H. Nahm, Y.M. Kim, and B.D. Kim. 2004. Characterization and molecular genetic mapping of microsatellite loci in pepper. *Theor. Appl. Genet.* 108, 619-627. Doi: <https://doi.org/10.1007/s00122-003-1467-x>
- Lee, H.-Y., N.-Y. Ro, H.-J. Jeong, J.-K. Kwon, J. Jo, Y. Ha, A. Jung, J.-W. Han, J. Venkatesh, and B.-C. Kang. 2016. Genetic diversity and population structure analysis to construct a core collection from a large *Capsicum* germplasm. *BMC Genet.* 17, 142. Doi: <https://doi.org/10.1186/s12863-016-0452-8>
- Marcos Pérez, D. 2013. Caracterización molecular y análisis de diversidad genética en variedades de pimiento autóctonas de Galicia. MSc thesis. Facultad de Ciencias, Universidade da Coruña, La Coruña, Spain.
- Nagy, I., A. Stágel, Z. Sasvári, M. Röder, and M. Ganal. 2007. Development, characterization, and transferability to other Solanaceae of microsatellite markers in pepper (*Capsicum annuum* L.). *Genome* 50(7), 668-688. Doi: <https://doi.org/10.1139/g07-047>
- Nei, M. 1972. Genetic distance between populations. *The American Naturalist* 106(949), 283-292. Doi: <https://doi.org/10.1086/282771>
- Nicolai, M., M. Cantet, V. Lefebvre, A.-M. Sage-Palloix, and A. Palloix. 2013. Genotyping a large collection of pepper (*Capsicum* spp.) with SSR loci brings new evidence for the wild origin of cultivated *C. annuum* and the structuring of genetic diversity by human selection of cultivar types. *Genet. Resour. Crop Evol.* 60, 2375-2390. Doi: <https://doi.org/10.1007/s10722-013-0006-0>
- Odland, M.L. and A.W. Porter. 1941. A study of natural crossing in pepper (*Capsicum frutescens* L.). *J. Am. Soc. Hort. Sci.* 38, 585-588.
- Oyama, K., S. Hernández-Verdugo, C. Sánchez, A. González-Rodríguez, P. Sánchez-Peña, J.A. Garzón-Tiznado, and A. Casas. 2006. Genetic structure of wild and domesticated populations of *Capsicum annuum* (Solanaceae) from northwestern Mexico analyzed by RAPDs. *Genet. Resour. Crop Evol.* 53(3), 553-562. Doi: <https://doi.org/10.1007/s10722-004-2363-1>
- Peakall, R. and P.E. Smouse. 2012. GenAlEx 6.5: Genetic analysis in Excel. Population genetic software for teaching and research-an update. *Bioinformatics* 28(19), 2537-2539. Doi: <https://doi.org/10.1093/bioinformatics/bts460>
- Ramírez, J.G., B.W. Avilés, and E.R. Dzib. 2006. Áreas con potencial productivo para Chile Habanero (*Capsicum chinense*, Jacq) en el estado de Yucatán. pp. 66-67. In: Memoria Primera Reunión Nacional de Innovación Agrícola y Forestal (RENIAF). COFUPRO; SAGARPA-INIFAP; UACH, Merida, Mexico.
- Rivera, A., A.B. Monteagudo, E. Igartua, A. Taboada, A. García-Ulloa, F. Pomar, M. Riveiro-Leira, and C. Silvar. 2016. Assessing genetic and phenotypic diversity in pepper (*Capsicum annuum* L.) landraces from North-West Spain. *Sci. Hortic.* 203, 1-11. Doi: <https://doi.org/10.1016/j.scienta.2016.03.006>
- Shannon, C.E. 1948. A mathematical theory of communication. *The Bell Syst. Tech. J.* 27(3), 379-423, 623-656. Doi: <https://doi.org/10.1002/j.1538-7305.1948.tb01338.x>
- Silva Aguilar, F. 2011. Estimación de parámetros genéticos en el contenido de capsaicina y rendimiento en una cruz de pimentón cultivar serrano y ají cayenne (*Capsicum annuum*) por medio del análisis de medias generacionales. MSc thesis. Universidad Nacional de Colombia, Sede Palmira Facultad de Ciencias Agropecuarias, Palmira, Colombia.
- Stewart Jr, C.N. and L.E. Via. 1993. A rapid CTAB DNA isolation technique useful for RAPD fingerprinting and other PCR applications. *Biotechniques* 14(5), 748-751. Doi: [https://doi.org/10.1007/978-3-642-60441-6\\_4](https://doi.org/10.1007/978-3-642-60441-6_4)
- Tanksley, S.D. 1983. Molecular markers in plant breeding. *Plant Mol. Biol. Rep.* 1(1), 3-8. Doi: <https://doi.org/10.1007/BF02680255>
- Viafara-Vega, R.A. and H. Cárdenas-Henao. 2018. Caracterización molecular de líneas de interés comercial de *Capsicum frutescens* (Solanaceae) presentes en un banco de semillas. In: XII Congreso Latinoamericano de Botánica. Asociación Latinoamericana de Botánica; Quito.
- Wahyuni, Y., A.-R. Ballester, E. Sudarmonowati, R.J. Bino, and A.G. Bovy. 2011. Metabolite biodiversity in pepper (*Capsicum*) fruits of thirty-two diverse accessions: Variation in health-related compounds and implications for breeding. *Phytochemistry* 72(11-12), 1358-1370. Doi: <https://doi.org/10.1016/j.phytochem.2011.03.016>
- Wright, S. 1931. Evolution in Mendelian populations. *Genetics* 16(2), 97-159. Doi: <https://doi.org/10.1093/genetics/16.2.97>
- Xanthopoulou, A., I. Ganopoulos, G. Koubouris, A. Tsafaris, C. Sergendani, A. Kalivas, and P. Madesis. 2014. Microsatellite high-resolution melting (SSR-HRM) analysis for genotyping and molecular characterization of an *Olea europaea* germplasm collection.

- Plant Genet. Resour. 12(3), 273-277. Doi: <https://doi.org/10.1017/S147926211400001X>
- Yumnam, J.S., W. Tyagi, A. Pandey, N.T. Meetei, and M. Rai. 2012. Evaluation of genetic diversity of chilli landraces from North Eastern India based on morphology, SSR markers and the Pun1 locus. Plant Mol. Biol. Rep. 30(6), 1470-1479. Doi: <https://doi.org/10.1007/s11105-012-0466-y>
- Zhang, X.-M, Z.H. Zhang, X.-Z. Gu, S.-L. Mao, X.-X. Xiang, J. Chadoeuf, A. Palloix, L.-H. Whang, and B.-X. Zhang. 2016. Genetic diversity of pepper (*Capsicum* spp.) germplasm resources in China reflects selection for cultivar types and spatial distribution. J. Integr. Agric. 15(9), 1991-2001. Doi: [https://doi.org/10.1016/S2095-3119\(16\)61364-3](https://doi.org/10.1016/S2095-3119(16)61364-3)