



Original article

High risk for psychiatric disorders in bipolar offspring. A four years prospective study[☆]



Juan Jose Eraso-Osorio^{a,b}, Juan David Palacio-Ortiz^{a,b,*},
 Claudia Patricia Quintero-Cadavid^{a,b}, Santiago Estrada-Jaramillo^{a,b},
 Rommel Andrade-Carrillo^{a,b}, Sujey Gómez-Cano^{a,b},
 Jenny Garcia-Valencia^c, Daniel Camilo Aguirre-Acevedo^{a,c},
 Paula Andrea Duque-Rios^{a,b}, Johanna Valencia-Echeverry^a,
 Carlos López-Jaramillo^{a,b}

^a Member of the Research Group in Psychiatry (GIPSI), Department of Psychiatry, Faculty of Medicine, University of Antioquia, Medellín, Colombia

^b Mood Disorder Program, Hospital San Vicente Foundation, Medellín, Colombia

^c Institute of Medical Research, University of Antioquia, Medellín, Colombia

ARTICLE INFO

Article history:

Received 21 August 2019

Accepted 30 January 2020

Available online 12 June 2020

Keywords:

Adolescent

Age of Onset

Bipolar Disorder

Child of Impaired Parents

Prospective Studies

Risk Factors

Psychopathology

ABSTRACT

Bipolar disorder (BD) has a large hereditary component. It is a disorder that begins in early adulthood, but about which it has been described a premorbid period preceding the onset of BD. During this herald expression psychiatric disorders and symptoms, such as depressive, manic, psychotic, anxious and others, may appear.

Objective: To determine the psychopathological profile of a Bipolar Offspring (BO) group compared with the Community Control Offspring (CCO) group, and its evolution over time, including subthreshold symptoms and mental disorders.

Methods: We conducted an observational mixed cohort study, with a prospective design. We included subjects from six to 30 years of age, from the region of Antioquia, Colombia. A total of 131 subjects from the risk group BO and 150 subjects from the CCO group were evaluated through validated psychiatric diagnostic interviews (K-SADS-PL and DIGS) at baseline and at 4 years follow up. All interviews were carried out by a staff blind to parent diagnoses. Follow-up assessment were complete in 72% of the offspring. Forty-two subjects were excluded as they surpassed the age of 30 years, and only 46 subjects were not followed (change of address or did not consent to participate).

* Corresponding author.

E-mail address: tdahcartagena@gmail.com (J.D. Palacio-Ortiz).

[☆] This article was written and approved by all its authors and it has not been published in another journal or scientific publication.

<https://doi.org/10.1016/j.rcp.2020.01.008>

0034-7450/© 2020 Asociación Colombiana de Psiquiatría. Published by Elsevier España, S.L.U. All rights reserved.

Results: Compared with the CCO group, the BO group had a higher frequency of affective disorder, psychotic disorder, externalizing disorders and use of the psychoactive substances during both assessments at time 1 and 2. The magnitude of the differences between the groups increased when they reach time 2. The BO group had a greater risk for presenting subthreshold symptoms and definitive psychiatric disorders, such as affective disorders, psychotic disorders and externalizing disorders. In addition, the BO group had a younger age of onset for psychoactive substances consumption.

Conclusion: During the follow-up period, the BO group had a higher risk of presenting mental disorders compared with the CCO group. The most relevant symptoms and disorders that could precede the onset of BD were depressive, bipolar not otherwise specified, psychotic and substance use.

© 2020 Asociación Colombiana de Psiquiatría. Published by Elsevier España, S.L.U. All rights reserved.

Riesgo elevado de trastornos psiquiátricos en hijos de padres con trastorno bipolar. Estudio prospectivo de cuatro años de duración

R E S U M E N

Palabras clave:

Adolescente
Edad de inicio
Trastorno bipolar
Hijo de padre con discapacidad
Estudios prospectivos
Factores de riesgo
Psicopatología

El trastorno bipolar (TB) tiene un gran componente hereditario. Es un trastorno que comienza en la edad adulta temprana, pero acerca del cual se ha descrito un período premórbido que precede al inicio de TB. Durante esta expresión heraldo, pueden aparecer trastornos y síntomas psiquiátricos, como depresivos, maníacos, psicóticos, ansiosos y otros.

Objetivo: Determinar el perfil psicopatológico de un grupo de hijos de padres con TB (BO) en comparación con el grupo de hijos de padres control de la misma comunidad (CCO), y su evolución en el tiempo. Los síntomas subumbrales y los trastornos mentales serán incluidos.

Métodos: Nosotros llevamos a cabo un estudio observacional mixto de cohorte, con diseño prospectivo. Incluimos sujetos de seis a 30 años de edad, de la región de Antioquia, Colombia. Un total de 131 sujetos del grupo de riesgo BO y 150 sujetos del grupo CCO fueron evaluados a través de entrevistas de diagnóstico psiquiátricas validadas (K-SADS-PL y DIGS), al inicio y a los 4 años de seguimiento. Todas las entrevistas se llevaron a cabo por personal ciego a los diagnósticos de los padres. La evaluación de seguimiento se completó en el 72% de la descendencia. Cuarenta y dos sujetos fueron excluidos ya que superaron la edad de 30 años, y solo 46 sujetos no fueron seguidos (cambio de dirección o no dieron su consentimiento para participar).

Resultados: En comparación con el grupo CCO, el grupo BO tuvo una mayor frecuencia de trastorno afectivo, el trastorno psicótico, los trastornos de externalización y el uso de las sustancias psicoactivas durante ambas evaluaciones en los tiempos 1 y 2. La magnitud de las diferencias entre los grupos aumentó cuando alcanzaron el tiempo 2. El grupo BO tuvo un mayor riesgo de presentar síntomas subumbrales y trastornos psiquiátricos definitivos, tales como trastornos afectivos, trastornos psicóticos y trastornos de externalización. Además, el grupo BO tuvo una edad de comienzo más baja para el consumo de sustancias psicoactivas.

Conclusión: Durante el período de seguimiento, el grupo BO tuvo un mayor riesgo de presentar trastornos mentales en comparación con el grupo CCO. Los síntomas y trastornos más importantes que preceden al inicio del TB fueron: depresivo, bipolar no especificado de otra manera, psicóticos y el uso de sustancias.

© 2020 Asociación Colombiana de Psiquiatría. Publicado por Elsevier España, S.L.U. Todos los derechos reservados.

Introduction

Bipolar disorder (BD) is a severe and chronic mental disorder characterized by affective episodes of depression or mania, which significantly affects the patient's functionality.^{1,2} The global prevalence of the bipolar spectrum disorders (BSD) is

2.4%, distributed in BD type I 0.6%, BD type II 0.4% and BD not specified 1.4%.^{2,3} Its prevalence in Colombia is 1.8%.⁴ The disorder mainly affects people of productive age, occupying the fifth place of burden of mental illness globally.⁵ It has a risk of suicide up to 23 times higher than the general population, and up to three times greater than the risk of patients with Major Depressive Disorder (MDD).⁶

Although BD typically begins in early adulthood,⁷ several studies have shown premorbid psychopathology during the first two decades, such as, affective lability, depressive symptoms, subthreshold manic symptoms, symptoms of bipolar spectrum disorders, psychotic symptoms and especially MDD or subthreshold hypomanic episodes.⁸⁻¹⁵

Major affective disorders are 2.7 times more frequent in bipolar offspring (BO), compared to controls; It has been concluded that the most important risk factor for developing the condition is the family history.^{11,16-18} The BD heritability is estimated about 85%.^{1,19}

Genetic studies in Colombia have been carried out in a population with BD and other diseases of hereditary transmission^{20,21}; an initiative that arose from findings in a geographically and culturally isolated population, in which the characteristics of an isolate were confirmed, known as the "paisa genetic isolate".^{22,23} These types of populations offer excellent possibilities for performing low frequency gene analysis. Thus, the group of research in psychiatry (GIPSI) of the University of Antioquia has conducted studies in this high-risk population of BO. Preliminary studies described that BO group presents subthreshold affective episodes, or affective symptoms, and high frequency of psychiatric disorders such as MDD, attention deficit hyperactivity disorder (ADHD) and separation anxiety disorder (SAD); in addition to alterations in cognitive functions such as attention, verbal fluency, working memory and processing speed.²⁴⁻²⁶

In a previous study about life time mental disorders, we found that in comparison with the community control offspring (CCO) group,²⁶ the BO group presented a higher frequency of BD, unspecified BD, MDD, substance use disorder (SUD), alcohol use disorder, ADHD, oppositional defiant disorder (ODD) and post-traumatic stress disorder (PTSD).

Prospective studies in the BO population in the United States,^{11,27-29} Canada,^{14,19} Netherlands,³⁰ and Switzerland,³¹ had documented precursors of BD such as: depressive episodes, sleep disturbances, subthreshold mania episodes, subthreshold psychotic episodes, psychotic symptoms during an affective episode, disruptive disorders and, to a lesser extent, symptoms of anxiety disorders.³²

To our knowledge, there is only one prospective study in a genetically isolated population about a population at risk of presenting BD.²⁹

This is the continuation of a study²⁶ whose main objective was to determine the psychopathological profile of the BO group compared to the CCO group, and to evaluate its evolution in a time 2 assessment, in subjects from the paisa genetic isolate.

Materials and methods

This is an observational study of a mixed cohort, with a prospective design. It is a continuation of the study "Psychiatric disorders through life", which time 1 assessment was completed in 2014.²⁶ The current data were obtained in an evaluation 3-4 years later (time 2 assessment), with a cut-off date of December 2017.

This is part of the "Cambios tempranos en población de alto riesgo para trastorno afectivo bipolar tipo I: comparación de

trastornos psiquiátricos, alteraciones del sueño y neuroimágenes entre hijos de pacientes con trastorno afectivo bipolar versus controles" project, that was approved by the University of Antioquia's Bioethics Committee and the research ethics committee of the Hospital San Vicente Fundación. All ethical principles for medical research in humans of the Declaration of Helsinki were fulfilled.³³ The informed consent was completed before every evaluation of parents, co-parents and offspring's (the minors granted informed assent).

Sample selection

Details of subject selection methodology could be found in a previous paper.²⁶

Parents of exposed subjects

Patients belonging to the genetic isolate "paisa", diagnosed BD type-I by using the Interview Diagnostic Interview for Genetic Studies (DIGS)³⁴ validated in Colombia,³⁵ according to criteria of the Diagnostic and Statistical Manual of Mental Disorders fourth revised edition (DSM IV- TR).³⁶

Parents of subjects not exposed

Community people originally from the same geographical area, who did not have a diagnosis of BD or psychotic disorders according to the DIGS, and who did not have first-degree relatives with BD. The presence of depressive or anxiety disorders was allowed. These parents were matched by age, sex, and housing area (??urban or rural).

Study population

The risk BO group and the CCO group of subjects were already assessed in 2014 (time 1).²⁶ They were recruited aged from 6 to 30 years, and also with a Paisa origin in at least two generations. At time 1, subjects with diagnoses of mental disorders secondary to medical conditions or medication use were excluded. Subjects with moderate/severe cognitive disability, classic autism according to DSM IV-TR criteria were also excluded. The CCO group consisted of children of community parents. Parents of these children, did not have psychotic disorder or bipolar spectrum, and did not have first-degree relatives with BD.

Sample size

The sample size for the study at time 1²⁶ was calculated from a psychiatric disorder prevalence of 16% in BO,³⁷ a power of 80% and a type I error of 5%. With a sample of 90 subjects for the BO group and 90 subjects for the CCO group (with Yates correction, 100 BO and 101 CCO) and with a margin of losses of 20%, the final sample was planned with 126 BO subjects and 128 CCO subjects.²⁶ At time 2, we started with the sample already studied at time 1 of 127 BO subjects, and 150 CCO subjects. Four subjects who had been evaluated in time 1, were added to the BO group, they were not included in the publication since they were in the process of evaluation during the cut-off point.

Instruments

Schedule for Affective Disorders and Schizophrenia for School Aged Children Lifetime (K-SADS-PL) ³⁸validated for Latin America.³⁹⁻⁴¹ It is a semi-structured diagnostic interview designed to evaluate current and past episodes of psychopathology according to the DSM-5 criteria. It identifies the presence of several definitive mental disorders, and can identify subthreshold symptoms of the different disorders. It has good inter-rater performance in the Latin American version. Good to excellent kappa coefficients have been quantified for MDD $\kappa = 0.76$, any anxiety disorder $\kappa = 0.84$, ADHD $\kappa = 0.9$ and conduct disorder (CD) $\kappa = 1$.³⁹⁻⁴¹ It has a PTSD component that assesses the presence of the following stressful events: car accidents, other accidents, fires, witnessing a natural disaster, being a witness or victim of a violent crime, having received traumatic news, witnessing terrorist acts, having witnessed war-like conflicts, witness domestic violence, be a victim of physical abuse or sexual abuse and others.

DIGS Colombian validated version.³⁵ It is a semi-structured diagnostic interview, designed to evaluate psychiatric disorders, in genetic studies. This instrument evaluates mood and psychotic disorders, substance use disorders, anxiety disorders, eating behavior disorders and others.

Children's Global Assessment Scale (CGAS) is an instrument to provide a global measure of the functioning level in children and adolescents.⁴² The measure provides a global rating, on a scale of 0-100 in a hypothetical health-disease continuum.⁴³

Global Assessment of Functioning scale (GAF) is widely used in the DSM-IV,³⁶ which provides a subjective appreciation on a scale of 0 to 100, in a hypothetical health-disease continuum, about the individual's general functioning.

Procedures

Subjects from BO or CCO groups under 18 years old were assessed with K-SADS-PL-5 Latin American version,^{36,37} to determine the presence of subthreshold symptoms, and episodes of psychiatric diagnoses. Additionally, the CGAS was carried out.⁴² Subjects older than 18 years old were assessed with the DIGS. In addition, sections of the K-SADS-PL-5 were carried out, including simple anxiety disorder (SAD), specific phobia, generalized anxiety disorder (GAD), ADHD, ODD, CD, disruptive mood dysregulation disorder (DMDD), non-suicidal self-injury (NSSI) and PTSD. The GAF for each subject was also carried out.

The interviews were applied by a psychiatry resident or a psychiatrist previously trained in the use of DIGS and K-SADS-PL-5, who were blind to the parents' diagnosis. For the Best Estimated procedure; two expert psychiatrists, who did not conduct the diagnostic interviews, corroborated the psychiatric diagnosis of each individual. When they did not agree, a third expert evaluator was consulted. When a diagnosis was found during the evaluation, the evaluated subject was immediately referred to the national health system service.

Variables

The following demographic variables were considered: sex, age, schooling (in years), number of schooling failing years, housing area (rural or urban), and socio-economic status (SES). Colombian SES is divided into 6 levels: lowest status from 1 to 3, and highest status from 4 to 6. The clinical variables were obtained from the DIGS and K-SADS-PL-5 interviews: Depressive episode, subthreshold depressive symptoms, MDD, BD, unspecified BD symptoms, BSD and episodes, psychosis, subthreshold psychotic symptoms, psychotic symptoms associated with BSD, panic disorder, SAD, social anxiety disorder, agoraphobia, simple phobia, GAD, obsessive-compulsive disorder, anorexia or bulimia, ADHD, ODD, CD, PTSD, experimental use of tobacco, regular use of tobacco, experimental use of liquor, abuse or dependence on alcohol, experimental use of psychoactive substances (PS) and SUD. The age of onset of psychiatric disorder or subthreshold psychiatric symptoms were included.

Statistical analysis

The qualitative variables were evaluated using frequencies and percentages, and the quantitative variables were evaluated using measures of central tendency and dispersion. The t-test was used for quantitative variables of normal distribution (i.e.: schooling) and the *U of Mann-Whitney* and *W of Wilcoxon* for non-normal distribution quantitative variables (i.e.: schooling failing years, functionality scales and age of onset of any psychiatric disorder). For the analysis of clinical variables differences, *Pearson Chi-square test* for independence and *Fisher's exact test* were used (when there were no cases in a given group). The *odds ratio (OR)* prevalence was calculated with 95% confidence intervals. A *logistic regression analysis* was performed with the variables of: age, sex, housing area, schooling and socioeconomic level. Same procedure was used for the analysis of psychiatric disorders groups: internalizing (anxiety and depression) externalizing (ADHD, ODD, or CD) and SUD. *McNemar and McNemar-Bowker test* were used to evaluate evolution of this cohort over time, and the statistical significance of the diagnostic changes for every single subject.

The *Kaplan-Meier procedures*, *Log-Rank* and *Cox regression* were used to assess the accumulated frequencies of psychiatric disorders of the two groups by the age, in addition to evaluate the influence of the sociodemographic factors: age, sex, housing area, schooling, socioeconomic level and stressful events. Subjects with subthreshold symptoms of each psychiatric disorder were included to assess premorbid trajectories. A level of significance of 0.05 was established for all statistical tests. Data analysis was carried out in an *IBM SPSS Statistics* version 23 software.

Results

The characteristics of the parents with BD, their spouses (co-parents) and control parents from whom the initial cohort was obtained in 2014, were described in the preliminary study.²⁶

Table 1 – Sample demographic features and functionality scales.

Demographic variables	CCO	BO	Statistic	p
Total Subjects	150	131		
Sex	F: 71 M: 79	F: 59 M: 72	0.14 a	0.700
Median age in years (SD)	20.4 ± 6.9	20.5 ± 6.01	z = 0.17	0.865
6 to 11 years of age (%)	12	1		
12 to 17 years of age (%)	38	32	19.407 a	< 0.01
18 to 30 years of age (%)	59	56		
Lower socioeconomic status	120	103	0.081 a	0.776
Upper socioeconomic status	30	28	0.081 a	0.776
Housing area (urban)	74 49.3%	72 55%	0.89 a	0.46
Schooling years (median)	11 ± 4.2	11 ± 3.7	t = 0.46	0.64
Schooling failed years (median)	0.4	0.6	z = 1.6	0.11
Functionality scales (weighted mean)	CCO	BO	z	p
CGAS score during evaluation at time 2	90 ± 20	80 ± 20	-2.742	0.01
CGAS lower score during a lifetime	80 ± 30	65 ± 19	-3.395	< 0.01
CGAS higher score during a lifetime	90 ± 20	85 ± 21	-2.867	< 0.01
Any functionality scale: lower score	85 ± 30	70 ± 25	-6.160	< 0.01
GAF score during evaluation at time 2	100 ± 5	90 ± 14	-6.763	< 0.01
GAF lower score during a lifetime	95 ± 20	75 ± 39	-5.895	< 0.01

F: female, M: male, CCO: community controls offspring, BO: bipolar offspring, Low socioeconomic status: levels 1,2 or 3, High socioeconomic status: levels 4, 5 or 6, CGAS: Children's Global Assessment Scale, GAF: Global Assessment Functioning Scale, a: Pearson Chi-square test, t: t-test, z: proximity to the normal, U: U of Mann-Whitney

Follow-up

We started with a cohort obtained from the preliminary studies: 150 subjects from CCO group and 131 subjects from BO group.²⁴⁻²⁶ The retention was 72% and 66% respectively. We excluded 42 subjects who exceeded the age of 30 at time 2 (26 CCO and 16 BO). We were not able to follow-up 46 subjects (they did not attend to the appointment, did not wish to participate, or contact information was not updated). Three subjects from the BO cohort died after time 1 (two suicide cases and one homicide case), they were not considered for the statistical analysis, as it was not part of the analysis protocol.

Demographics

The BO group was similar to the CCO group at time 2, in terms of sex, age, socioeconomic status, housing area, schooling, and repeated school years.

Functionality Scales

The BO group had a higher risk of having a functionality score lower than 70 points OR 3.4 (95% CI 2.0 - 5.8, $p < 0.01$). The CCO group had a median functionality score higher than the BO, and was statistically significant (see Table 1).

Psychiatric disorders and subthreshold symptoms

The associations observed in time 1 are maintained. Assessment at time 2 showed that there is an increased in the association magnitude. Significant OR were found mainly in MDD, BD, subthreshold psychotic symptoms, ADHD, ODD, SUD, and cigarette or alcohol use disorder. There was no statistically significant change after the adjusted analysis (see Table 2).

The new DSM-5 diagnostic proposals such as DMDD, NSSI, selective mutism, intermittent explosive disorder, limited prosocial emotions and avoidant food restrictive ingestion disorder were evaluated only at time 2. There were no significant differences between the groups. Only three cases of NSSI were found in the BO group versus zero in the CCO group (Fisher's exact test: 0.008). Table 3 shows the differences between the groups (see Table 3).

Diagnosis' evolution over time

The BO group members had a statistically significant tendency to change their diagnosis from negative to positive. This was especially true for MDD, SAD, social anxiety disorder, simple phobias, ADHD, SUD and subthreshold psychotic symptoms. In addition, most of those who had a positive diagnosis condition at time 1 did not change at the time 2 assessment (see Table 4).

At the time 2 assessment, we found out 11 subjects with a new diagnosis of unspecified BD. These subjects presented other diagnosis during the time 1 assessment: two had subthreshold depressive symptoms, two had SAD, two had ADHD, four had ODD, six had CD, and two had cases presented SUD.

When analyzing the cases of psychiatric disorders over time, we founded out that the probability of having MDD, bipolar spectrum, ADHD, ODD, CD and starting consumption of PS was significantly higher in the BO group. (See Table 5 and Figure 1).

The BO group had a higher risk of subthreshold symptoms of affective disorders, psychosis, panic, GAD, CD and DMDD (see Table 6), although some of them lost statistical significance after adjusting for demographic variables, like subthreshold psychotic symptoms and DMDD.

Table 2 – Mental disorders in CCO and BO during evaluation at time 1 and follow-up at time 2.

Mental Disorder	Time 1 (cohort 2014)					Time 2 (cohort 2017)						
	CCO (n = 150)	BO (n = 131)	OR	(CI 95%)	OR*	f	CCO (n = 108)	BO (n = 84)	OR	(CI 95%)	OR*	f
Depressive episode	11	23	2.7	(1.3 - 5.8)	2.7		7	24	5.8	(2.4 - 14.3)	5.7	
Subthreshold depressive symptoms	5	29	8.2	(3.1 - 22.0)	11.7		12	19	2.4	(1.1 - 5.2)	2.7	
Major depressive disorder	10	15	1.8	(0.8 - 4.2)	1.8		5	13	3.8	(1.3 - 11.2)	3.8	
Bipolar Disorder	0	7	NA	NA	NA	<0.01	0	9	NA	NA	NA	<0.01
Bipolar Disorder unspecified	2	17	11	(2.5 - 48.7)	11.1		3	13	6.5	(1.8 - 23.5)	7.9	
Bipolar spectrum disorder	2	24	16.6	(3.8 - 71.7)	16.4		3	22	12.5	(3.6 - 43.6)	13.8	
Psychosis	0	2	NA	NA	NA	0.2164	0	2	NA	NA	NA	0.188
Subthreshold Psychotic symptoms	0	10	NA	NA	NA	<0.01	4	19	7.7	(2.5 - 23.6)	9.2	
Psychotic symptoms associated to BSD	0	5	NA	NA	NA	0.0211	0	15	NA	NA	NA	<0.01
Panic disorder	1	3	3.5	(0.4 - 34.5)	NA	NA	0	4	NA	NA	NA	0.034
Separation anxiety disorder	14	15	1.3	(0.6 - 2.9)	1.3		15	15	1.4	(0.6 - 3)	1.8	
Social anxiety disorder	16	14	1.0	(0.4 - 2.1)	1		15	21	2.1	(1.00 - 4.4)	2.1	
Agoraphobia	1	2	2.3	(0.2 - 26.2)	2.3		1	3	4	(0.4 - 39.2)	3.6	
Simple Phobia	25	14	0.6	(0.3 - 1.2)	0.6		23	22	1.3	(0.7 - 2.6)	1.3	
Generalized anxiety disorder	5	8	1.9	(0.6 - 6.1)	1.8		5	6	1.6	(0.5 - 5.4)	1.4	
Obsessive - Compulsive disorder	4	1	0.3	(0.03 - 2.6)	0.2		3	1	0.4	(0.04 - 4.2)	0.4	
Anorexia or Bulimia	0	1	NA	NA	NA	0.4662	0	1	NA	NA	NA	0.435
Attention deficit-hyperactivity disorder	19	35	2.7	(1.4 - 4.9)	3.1		19	27	2.2	(1.1 - 4.4)	2.8	
Oppositional Defiant Disorder	6	20	4.5	(1.8 - 11.7)	4.7		7	13	2.7	(1.01 - 7.0)	2.8	
Conduct disorder	5	11	2.8	(0.95 - 8.3)	3.1		4	9	3.2	(0.9 - 10.6)	3.9	
Cigarette experimental use	33	41	1.7	(0.96 - 2.8)	2.1		20	41	4.2	(2.2 - 8.1)	4.4	
Cigarette continuous use	12	13	1.3	(0.6 - 2.9)	1.8		6	19	5	(1.9 - 13.2)	5.1	
Alcohol experimental use	82	80	1.3	(0.8 - 2.1)	1.2		68	71	3.3	(1.6 - 6.7)	2.5	
Alcohol use disorder	4	13	4.0	(1.3 - 12.7)	5.4		2	14	10.7	(2.4 - 48.5)	10.9	
Psychoactive substance experimental use	24	30	1.6	(0.9 - 2.8)	2.2		13	34	5	(2.4 - 10.4)	5.6	
Substance use disorder	3	20	8.9	(2.6 - 30.7)	15.7		3	15	7.7	(2.1 - 27.5)	10.1	
Posttraumatic stress disorder	4	13	4.1	(1.3 - 12.9)	4.2		6	9	2.1	(0.7 - 6.0)	1.9	
* Suicide	0	2	NA	NA	NA	NA	0	0	NA	NA	NA	

CCO: community controls offspring, BO: bipolar offspring, BSD: Bipolar spectrum disorder, n: number, OR: Odds ratio, OR*: adjusted Odds Ratio, NA: Not applicable, CI95%: confidence interval 95%, f: exact Fishers test, * suicide cases (not included for analysis).

Table 3 – Global Analysis of mental disorders.

Mental Disorders	CCO		BO		OR	(CI 95%)	OR*	(CI 95%)
	n	(%)	n	(%)				
No mental disorder	87	65.4	46	34.6	0.4	(0.2 - 0.6)	0.4	(0.2 - 0.6)
Any mental disorder	73	42	101	58	3.6	(2.1 - 6.0)	3.6	(2.1 - 6.1)
Any affective disorder	23	26.1	65	73.9	5.4	(3.1 - 9.5)	5.4	(3.1 - 9.9)
Any internalizing disorders	54	40.3	80	59.7	2.8	(1.7 - 4.5)	2.8	(1.7 - 4.6)
Any externalizing disorders	26	37.1	44	62.9	2.4	(1.4 - 4.2)	2.6	(1.4 - 4.9)
Any psychoactive substance use	13	26.5	36	73.5	4	(2.0 - 7.9)	6.1	(2.7 - 13.6)
Co-occurrence of Internalizing and Externalizing disorders	13	28.9	32	71.1	3.4	(1.7 - 6.8)	3.8	(1.8 - 8.2)
Sub - threshold symptoms	18	40	27	60	1.9	(0.99 - 3.6)	2.1	(1.1 - 4.1)
Cigarette use before 14 years old	16	32.7	33	67.3	2.8	(1.4 - 5.3)	3	(1.5 - 5.9)
Smoker of 5 or more cigarettes a day	5	38.5	8	61.5	1.9	(0.6 - 5.9)	2.7	(0.8 - 9.9)
Alcohol use before 14 years old	36	37.5	60	62.5	2.7	(1.6 - 4.4)	2.8	(1.7 - 4.8)
Psychoactive substance use before 18 years old	19	28.4	48	71.6	3.8	(2.1 - 7.0)	5.5	(2.7 - 11.4)
Victim or witness of a traumatic event	79	47	89	53	2.1	(1.3 - 3.5)	2.1	(1.2 - 3.5)

CCO: community controls offspring, BO: bipolar offspring, n: number, %: percentage, OR: Odds ratio, OR*: adjusted Odds Ratio, NA: Not applicable, CI95%: confidence interval 95%, Internalizing disorders: major depression disorder or any anxiety disorders, Externalizing disorders: attention deficit-hyperactivity disorder, oppositional defiant disorder or conduct disorder.

Table 4 – New positive cases in time 2 from negative cases in time 1, and cases that persisted positive.

Mental Disorder	CCO				BO			
	NPosT2	Post T2	Total	E	NPosT2	Post T2	Total	E
Depressive episode	1	6	7	1.000a	9	15	24	0.004a
Subthreshold depressive symptoms	11	1	12	0.001a	6	13	19	0.508a
Major depressive disorder	0	5	5	1.000a	5	8	13	0.063a
Bipolar Disorder	0	0	0	NA	2	7	9	0.500b
Bipolar Disorder unspecified	1	2	3	1.000a	4	9	13	0.375a
Bipolar spectrum disorder	1	2	3	1.000a	5	17	22	0.063a
Psychosis	0	0	0	NA	1	1	2	1.000b
Subthreshold psychotic symptoms	4	0	4	NA	12	7	19	0.000b
Psychotic symptoms associated to BSD	0	0	0	NA	10	5	15	0.002b
Panic disorder	0	0	0	NA	3	1	4	0.250b
Separation anxiety disorder	2	13	15	0.500a	7	8	15	0.016a
Social anxiety disorder	2	13	15	0.500a	12	9	21	0.000a
Agoraphobia	0	1	1	1.000a	2	1	3	0.500a
Simple Phobia	4	19	23	0.125a	15	7	22	0.000a
Generalized anxiety disorder	1	4	5	1.000a	3	3	6	0.250a
Obsessive - Compulsive disorder	0	3	3	1.000a	0	1	1	1.000a
Anorexia or Bulimia	0	0	0	NA	0	1	1	1.000b
Attention deficit-hyperactivity disorder	4	15	19	0.125a	6	21	27	0.031a
Oppositional Defiant Disorder	1	6	7	1.000a	4	9	13	0.125a
Conduct disorder	0	4	4	1.000a	1	8	9	1.000a
Cigarette experimental use	3	17	20	0.250a	18	23	41	0.000a
Cigarette continuous use	0	6	6	1.000a	12	7	19	0.000a
Alcohol experimental use	18	50	68	0.000a	23	48	71	0.000a
Alcohol use disorder	0	2	2	1.000a	9	5	14	0.004a
Psychoactive substance experimental use	0	13	13	1.000a	19	15	34	0.000a
Substance use disorder	0	3	3	1.000a	7	8	15	0.016a
Posttraumatic stress disorder	3	3	6	0.250a	2	7	9	0.500a

CCO: community controls offspring, BO: bipolar offspring, BSD: Bipolar spectrum disorder, NPos T2: New positive cases in time 2 from negative cases in time 1, PosT2: cases that persisted positive from time 1, E: statistical significance according to the McNemar test $p < 0.05$, a: binominal distribution McNemar test, b: Binominal distribution McNemar-Bowker test.

The BO group had a significantly a younger age of onset for tobacco use (14 vs 15 years, $p 0.046$), alcohol use (14 vs 15 years, $p < 0.001$) and use of any PS (16 vs 18 years, $p < 0.001$).

Discussion

This longitudinal follow-up study found out that the BO compared to CCO had a higher risk of presenting depressive,

bipolar, psychotic, substances use or externalizing disorders. During follow-up the BO group had a greater risk of presenting either new cases of psychiatric disorders or subthreshold disorders. The age of onset of psychiatric disorders, subthreshold disorder symptoms, and for PS consumption was younger in the BO group. Similarly, it was clearly observed that the high-risk group had a lower functionality compared to the control group.

Table 5 – Survival analysis, mental disorders onset.

First Episode of Mental Disorders	CCO		BO		HR (CI 95%)	p	HR* (CI 95%)	p
	n	(%)	n	(%)				
Depressive episode	12	8	32	24.4	3.3 (1.7 - 6.5)	<0.001	3.2 (1.6 - 6.2)	0.001
Bipolar Disorder	0	0	9	6.9				
Bipolar Spectrum Disorder	3	2	29	22.1	11.2 (3.4 - 36.7)	<0.001	11.0 (3.3 - 37.0)	<0.001
Psychosis	0	0	3	2.3				
Psychotic symptoms associated to BSD	0	0	15	11.5				
Panic disorder	1	0.7	6	4.6	6.9 (0.8 - 57.8)	0.073	8.8 (0.99 - 77.1)	0.510
Separation anxiety disorder	16	11	21	16	1.6 (0.8 - 3.0)	0.176	1.8 (0.9 - 3.6)	0.083
Social anxiety disorder	18	12	27	20.6	1.8 (0.96 - 3.2)	0.065	1.9 (1.02 - 3.5)	0.42
Agoraphobia	1	0.7	4	3.1	4.4 (0.5 - 39.7)	0.183	4.8 (0.5 - 44.4)	0.167
Simple Phobia	29	19	29	22.1	1.2 (0.7 - 2.0)	0.513	1.0 (0.6 - 1.7)	0.962
Generalized anxiety disorder	6	4	11	8.4	2.2 (0.8 - 6.1)	0.113	2.4 (0.8 - 6.7)	0.104
Obsessive - Compulsive disorder	4	2.7	1	1.8	0.3 (0.03 - 2.4)	0.243	0.7 (0.1 - 7.8)	0.737
Anorexia or Bulimia	0	0	1	0.8				
Attention deficit-hyperactivity disorder	22	15	42	32.1	2.5 (1.5 - 4.2)	0.001	2.7 (1.6 - 4.6)	<0.001
Oppositional Defiant Disorder	7	4.7	26	19.8	4.6 (2.0 - 10.5)	<0.001	4.4 (1.9 - 10.5)	0.001
Conduct disorder	5	3.3	13	9.9	3.1 (1.1 - 8.6)	0.034	3.5 (1.2 - 10.3)	0.025
Cigarette experimental use	36	24	59	45	2.1 (1.4 - 3.2)	0.001	2.3 (1.5 - 3.6)	<0.001
Alcohol experimental use	100	68	103	78.6	1.5 (1.2 - 2.0)	0.003	1.5 (1.1 - 2.0)	0.008
Psychoactive substance experimental use	24	16	49	37.4	2.6 (1.6 - 4.3)	<0.001	3.0 (1.8 - 5.1)	<0.001
Posttraumatic stress disorder	7	4.7	13	9.9	2.2 (0.9 - 5.4)	0.102	1.5 (0.6 - 3.8)	0.439
Disruptive Mood Dysregulation Disorder	1	0.7	0	0				

CCO: community controls offspring, BO: bipolar offspring, n: number, %: percentage, HR: hazard ratio, CI95%: confidence interval 95%*,*: adjusted by demographic variables (sex, age, socioeconomic status, schooling, housing area, traumatic events), BSD: Bipolar Spectrum Disorder

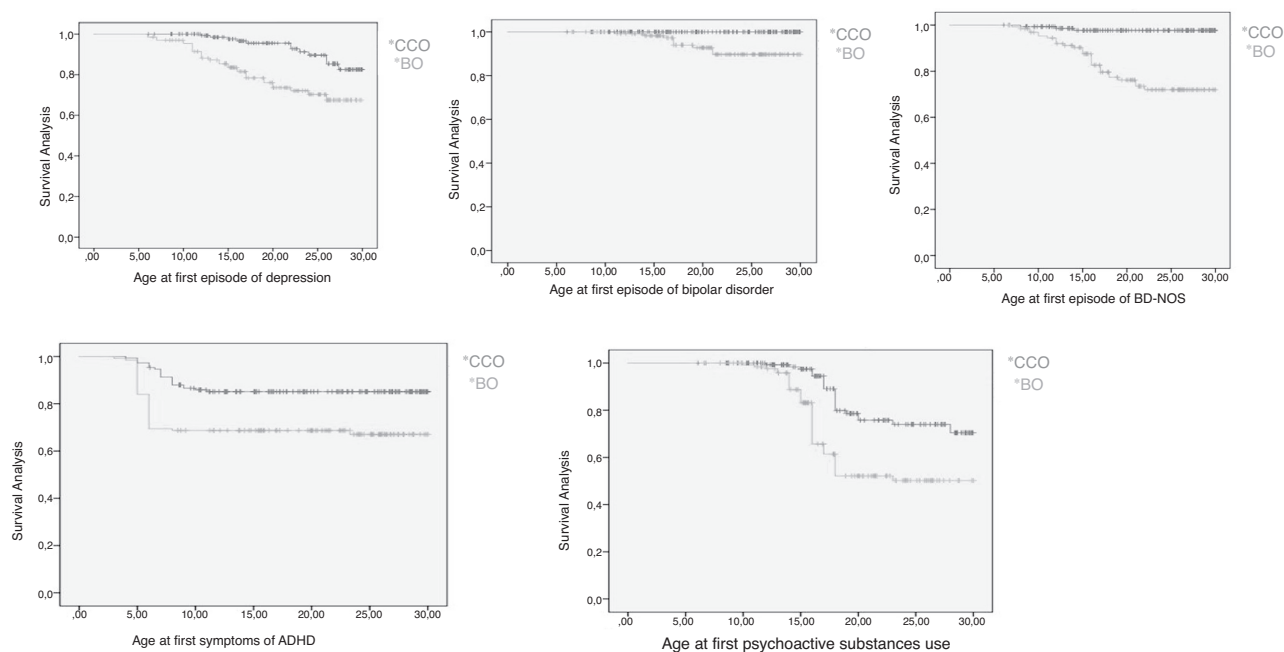


Figure 1 – Survival analysis.

The difference in BSD prevalence between the groups was clearly significant. Most of the cases of BSD in the BO group were BD unspecified type, which indicates that BD presentation starts with a non-specific affective symptomatology and progresses to a clearer manic episode. The mean age of onset for BSD is approximately 16 years, and that for the first manic episode was close to 20 years. This is consistent with the concept that considers, the BD unspecified as a clin-

ical precursor for BD.^{12,44} A reasonable approach would be to evaluate early interventions in this high-risk population, especially in those that reach the mentioned age and also present an early manifestation of BD. Two reasonable proposals can arise from this information, the first is to carry out early evaluations in this children, specifically in those who reach the age of 15 years old and who present suggestive elements of the BSD in order to calculate the risk of BD development.⁴⁵ The

Table 6 – Survival analysis, subthreshold symptoms onset.

First Episode of Mental Disorders including subthreshold symptoms	CCO		BO		HR (CI 95%)	p	HR* (CI 95%)	p
	n	(%)	n	(%)				
Depressive episode	7	4.7	25	19.1	4.2 (1.8 - 9.8)	0.00	4.0 (1.7 - 9.3)	0.00
Bipolar Disorder	3	2	17	13	6.4 (1.9 - 21.9)	0.003	5.9 (1.7 - 20.6)	0.006
Psychosis	5	3.3	14	10.7	3.1 (1.1 - 8.7)	0.029	2.7 (0.96 - 7.8)	0.059
Psychotic symptoms associated to BSD	0	0	10	7.6				
Panic attack	1	0.7	10	7.6	11.2 (1.4 - 87.9)	0.021	10 (1.2 - 81.7)	0.032
Separation anxiety disorder	41	27.3	35	26.7	1.001 (0.6 - 1.6)	0.994	0.95 (0.6 - 1.5)	0.83
Social anxiety disorder	34	22.7	35	26.7	1.2 (0.7 - 1.9)	0.495	1.05 (0.64 - 1.7)	0.86
Agoraphobia	1	0.7	4	3.1	4.3 (0.5 - 38.2)	0.194	3.2 (0.3 - 33.1)	0.322
Simple Phobia	30	20	32	24.4	1.3 (0.8 - 2.1)	0.326	1.1 (0.6 - 1.8)	0.832
Generalized anxiety disorder	9	6	25	19.1	3.3 (1.5 - 7.0)	0.002	2.8 (1.3 - 6.2)	0.011
Obsessive - Compulsive disorder	3	2	4	2.5	1.5 (0.3 - 6.6)	0.612	2.5 (0.4 - 15.5)	0.324
Anorexia or Bulimia	0	0	1	0.4				
Attention deficit-hyperactivity disorder	37	24.7	38	29	1.3 (0.8 - 2.0)	0.258	1.2 (0.8 - 1.9)	0.432
Oppositional Defiant Disorder	27	28	31	23.7	1.4 (0.8 - 2.3)	0.243	1.3 (0.7 - 2.2)	0.39
Conduct disorder	8	5.3	23	27.6	3.5 (1.6 - 7.9)	0.002	3.5 (1.5 - 8.0)	0.003
Cigarette experimental use	37	24.7	59	45	2.0 (1.3 - 3.0)	0.001	2.2 (1.5 - 3.5)	<0.001
Alcohol experimental use	100	69	102	77.9	1.4 (1.1 - 1.9)	0.015	1.4 (1.04 - 1.9)	0.026
Psychoactive substance experimental use	24	16	50	38.2	2.7 (1.7 - 4.5)	<0.001	3.1 (1.9 - 5.2)	<0.001
Posttraumatic stress disorder	4	2.7	8	6.1	2.2 (0.7 - 7.4)	0.19	1.2 (0.3 - 4.3)	0.788
Disruptive Mood Dysregulation Disorder	1	0.7	8	6.1	9.2 (1.1 - 73.5)	0.036	7.8 (0.95 - 63.7)	0.055

CCO: community controls offspring, BO: bipolar offspring, n: number, %: percentage, HR: hazard ratio, CI95%: confidence interval 95%, *: adjusted by demographic variables (sex, age, socioeconomic status, schooling, housing area, traumatic events), BSD: Bipolar Spectrum Disorder

second, is to use screening measures such as the Parent version General Behavior Inventory in this population, in order to actively identify affective symptoms in these subjects at risk.⁴⁶

This sample of parents with BD were recruited in a medical center for complex cases and also come from a high social vulnerability population. That could be a reason for this group to showed severe forms of BD, which in part could be reflected in the high prevalence of psychiatric disorders found in their offspring. Nevertheless, our findings are similar to other studies with parents with BD collected through advertisements²⁶ or in mood disorders clinics.^{14,19,30,31}

As mentioned above, three deaths were found in the BO group during the follow-up. One subject who committed suicide, had BD and was already in treatment during the time 1 assessment. Another subject, who had only social phobia in the first assessment (time 1), and who during the evolution presented an episode of MDD, followed by several suicide attempts, and the final outcome of suicide. One subject who presented ODD and CD at time 1, and who during the evolution presented mania induced by PS consumption, who died two weeks after his first psychiatric hospitalization by homicide. Although it is beyond the study objective, these deaths were described here, because they correspond to a serious consequence of mental disorder in the risk group. In other similarly at-risk populations, it has been documented that suicidal ideation prevalence is higher than controls, and that the presence of mood disorders, hostility, sexual abuse and family discord are strongly associated with the emergence of suicidal ideation.⁴⁷

As a secondary finding, it was found that compared to the CCO group, the BO group have twice the risk of being exposed to the traumatic events listed in the K-SADS-PL: PTSD section. Other studies have found a risk up to three

times higher for offspring of parents with BD, when exposed to any stressful event⁴⁸; these events predispose to the onset of mood disorders in this high-risk population.⁴⁹ Although we evaluated the influence of this stressful events on the age of onset of symptoms over time, and we did not observed differences when demographic variables are included in the adjusted analysis. Our findings suggest that traumatic events should be consider, however they are not a component that determines which psychopathology presents the BO group.

Our follow-up study showed that the BO group had more cases of mood disorders, subthreshold psychotic symptoms and SUD, which otherwise suggests a complex relationship among these mental disorders. Affective symptoms could be associated with PS use, and at the same time early substance use could be associated with the onset of affective and psychotic symptoms. As other authors, we propose that primary prevention of PS consumption is a fundamental part of the early strategy in this high-risk population, in conjunction with psychotherapy, family therapy, self-help programs.^{17,32,50,51}

The subjects with new diagnosis of BSD had previous diagnosis at time 1 such as: subthreshold depressive symptoms, ADHD, ODD, and CD, and consumption of PS. Our data is according to other authors' conceptualization on premorbid trajectories, highlighting anxiety disorders, mood disorders and substance use as a marker of the BD onset.¹⁵

Our analysis included subthreshold symptoms and the age of onset for different psychiatric disorders. This follow-up study showed that BO group presented an increased risk of subthreshold symptoms, mainly: depressive, bipolar and psychotic, which all seem to be precursors of the BD episodes. In addition, there is a greater risk for PS consumption and also at a younger age, which is a well-recognized trigger agent of BD episodes. All this information raises the question: what is the role of an early treatment in subthreshold symptoms or

an experimental consumption of PS, in the prognosis of this population?

Similar to other studies around the world, this study gathers evidence that bipolar spectrum symptoms indicate an increased risk of BD conversion.^{12,15,27,32,50-59} Contrary to other reports, our findings do not indicate a significant presence of anxiety disorders associated with the BD prodrome. However, it should be mentioned that in this follow-up there was a significant difference in the incidence of SAD, social anxiety and phobias in the risk group, which could indicate a certain tendency for BD development.

Limitations

This proband sample collection in a specialized center, could represent a selection bias of the risk cases. Besides that, the percentage of losses was greater than expected, in this way a limited sample size made our findings less accurate, which could have affected our results. On the other hand, we excluded subjects over 30 years-old who could provide information on psychopathology during middle adulthood. Finally, the possible influence of the treatment of some psychiatric disorders during follow-up was not accounted.

It should be considered that the losses during this follow-up study may influence our results. In the first place, half of the losses were due to exceeded the age limit of 30 years, but this was proportional for each group. Second, there is a trend that indicates that parents with greater psychopathology tend to report more symptoms in their children⁶⁰ and participate more in this kind of studies. In this sense, subjects who did not continue the follow-up could be part of the healthiest fraction of the risk cohort, and thus made have increased the differences found.

A strength of this study was our analysis of the age of onset for the psychiatric disorders, as well as the assessment of subthreshold symptoms which showed a similar tendency to the “full-syndrome” psychiatric disorders. Therefore, for future studies, we propose to determine the onset subthreshold symptoms to evaluated the risk of presenting BD during the follow-up.

This study was conducted in a genetically isolated population, and this implies the possibility of finding cases of great morbidity and less genetic variability. Although this is relevant for future genetic studies, the data obtained from a genetically isolated population should be taken with caution, since it is not entirely extrapolated to other populations.

Conclusion

We found out that the BO group compared with the CCO group in the genetic isolate “paisa” have higher frequency of affective, psychotic, externalizing and substances use disorders, and also a lower functionality. The magnitude of the difference in the prevalence of psychiatric disorders tends to increase in our four years follow-up, and it is not influenced by demographic variables. It is worthy to study subthreshold symptoms and their stability over time. For their part, mental health professionals must recognize the risks of the BO group

in order to make an early identification of disorders, timely treatment and prevent the outcomes of an untreated BD.

Authors’ participation

Author JDPO designed the study and wrote the protocol. Authors JJEO, CPQC, SEJ, RAC, SGC and JV conducted psychiatric interviews with participants. Authors PADR, CALJ and JDPO performed the best estimate procedure. Author DCAA conducted statistical analyses. Authors JJEO, JGV and JPDO contributed to the data analysis and wrote the manuscript. All authors contributed to and have approved the final manuscript.

Funding

This work was supported by COLCIENCIAS grant 1115 7114 9700, el Proyecto PRISMA Colciencias grant 99059634, la facultad de Medicina de la Universidad de Antioquia, and the Comité para el Desarrollo de la Investigación de la Universidad de Antioquia (CODI),

Conflict of interests

The authors have no conflicts of interest to disclose.

Acknowledgement

The work was supported in part by COLCIENCIAS grant 1115 7114 9700 (P.I. Juan D. Palacio), Proyecto PRISMA Colciencias grant 99059634 (P.I. Carlos Lopez) and Faculty of Medicine from the Universidad de Antioquia. We thank the families who participated in this research. We thank Maria Cecilia Lopez, Aurora Gallo and all members of de Grupo de Investigación en Psiquiatría (GIPSI) for their help and support contacting participating families. We also thank the Committee for the Development of Research of the U. of A., CODI, and the Sustainability Strategy of the Universidad de Antioquia. Vice-Rector’s Office of Research.

REFERENCES

1. Vieta E, Berk M, Schulze TG, Carvalho AF, Suppes T, Calabrese JR, et al. Bipolar disorders. *Nat Rev Dis Prim.* 2018;4:18008.
2. American Association of Psychiatry. Diagnostic and Statistical Manual of Mental disorders Fifth edition DSM-5. Am Psychiatr Publ. 2013.
3. Merikangas KR, Jin R, He J-P, Kessler RC, Lee S, Sampson NA, et al. Prevalence and Correlates of Bipolar Spectrum Disorder in the World Mental Health Survey Initiative. *Arch Gen Psychiatry.* 2011;68:241.
4. Posada-Villa J, Aguilar-Gaxiola S, Magana C, Gomez L. Prevalencia de trastornos mentales y uso de servicios: resultados preliminares del Estudio Nacional de Salud Mental Colombia, 2003. *Rev Colomb Psiquiatr.* 2004;33:262.
5. Vigo D, Thornicroft G, Atun R. Estimating the true global burden of mental illness. *The Lancet Psychiatry.* 2016;3: 171-8.

6. Tondo L, Baldessarini RJ. Suicidal Behavior in Mood Disorders: Response to Pharmacological Treatment. *Curr Psychiatry Rep.* 2016;18(9).
7. Grande I, Berk M, Birmaher B, Vieta E. Bipolar disorder. *Lancet.* 2016;387(10027):1561-72.
8. Faedda GL, Marangoni C, Serra G, Salvatore P, Sani G, Vázquez GH, et al. Precursors of bipolar disorders: A systematic literature review of prospective studies. *J Clin Psychiatry.* 2015;76:614-24.
9. Birmaher B, Gill MK, Axelson DA, Goldstein BI, Goldstein TR, Yu H, et al. Longitudinal trajectories and associated baseline predictors in youths with bipolar spectrum disorders. *Am J Psychiatry.* 2014;171:990-9.
10. Sala R, Axelson D, Birmaher B. Phenomenology Longitudinal Course, and Outcome of Children and Adolescents with Bipolar Spectrum Disorders. *Child Adolesc Psychiatr Clin N Am.* 2009;18:273-89.
11. Birmaher B, Axelson D, Goldstein B, Monk K, Kalas C, Obreja M, et al. Psychiatric disorders in preschool offspring of parents with bipolar disorder: the Pittsburgh Bipolar Offspring Study (BIOS). *Am J Psychiatry.* 2010;167:321-30.
12. Birmaher B, Axelson D, Goldstein B, Strober M, Gill MK, Hunt J, et al. Four-year longitudinal course of children and adolescents With bipolar spectrum disorders: The course and outcome of bipolar youth (COBY) study. *Am J Psychiatry.* 2009;166:795-804.
13. Duffy A, Horrocks J, Doucette S, Keown-Stoneman C, McCloskey S, Grof P. Childhood anxiety: an early predictor of mood disorders in offspring of bipolar parents. *J Affect Disord.* 2013;150:363-9.
14. Duffy A, Alda M, Hajek T, Grof P. Early course of bipolar disorder in high-risk offspring: prospective study. *Br J Psychiatry.* 2009;195:457-8.
15. Duffy A, Horrocks J, Doucette S, Keown-Stoneman C, McCloskey S, Grof P. The developmental trajectory of bipolar disorder. *Br J Psychiatry.* 2014;204:122-8.
16. Lapalme M, Hodgins S, LaRoche C. Children of parents with bipolar disorder: a metaanalysis of risk for mental disorders. *Can J Psychiatry.* 1997;42:623-31.
17. Duffy A, Alda M, Hajek T, Sherry S, Grof P. Early stages in the development of bipolar disorder. *J Affect Disord.* 2010;121(1-2):127-35.
18. Rasic D, Hajek T, Alda M, Uher R. Risk of mental illness in offspring of parents with schizophrenia, bipolar disorder, and major depressive disorder: A meta-analysis of family high-risk studies. *Schizophr Bull.* 2014.
19. Duffy A, Malhi GS, Grof P. Do the Trajectories of Bipolar Disorder and Schizophrenia Follow a Universal Staging Model? *Can J Psychiatry.* 2017;62:115-22.
20. García-valencia J, Palacio-acosta C, Calle-bernal J, Sánchez-pedraza RDEP, Restrepo-martínez MI, et al. Efectos de la agregación familiar en la caracterización clínica del trastorno afectivo bipolar tipo I en pacientes de población antioqueña. *Rev Colomb Psiquiatr.* 2003;XXXII:145-60.
21. Herzberg I, Jasinska A, García J, Jawaheer D, Service S, Kremeyer B, et al. Convergent linkage evidence from two Latin-American population isolates supports the presence of a susceptibility locus for bipolar disorder in 5q31-34. *Hum Mol Genet.* 2006;15:3146-53.
22. Arcos-Burgos M, Muenke M. Genetics of population isolates. *Clin Genet.* 2002;61:233-47.
23. Carvajal-Carmona LG, Ophoff R, Service S, Hartiala J, Molina J, Leon P, et al. Genetic demography of Antioquia (Colombia) and the Central Valley of Costa Rica. *Hum Genet.* 2003;112(5-6):534-41.
24. Palacio JD, Zapata-barco AM, Aguirre-acevedo DC, Tamayo AL, Lopera-vásquez JP, López MC, et al. Hijos de pacientes con trastorno afectivo bipolar tipo I de una población paisa: perfil psicopatológico y neuropsicológico. *Rev Colomb Psiquiatr.* 2011;40:90-107.
25. Palacio-Ortiz J, Uribe-Villa E, Duque-Ríos P, Gutierrez-Briceño P, Zapata-Henao V, Peña-Quintero CCE, et al. Descripción de perfiles psicopatológicos y neurocognitivos de hijos de pacientes con trastorno bipolar tipo I dentro un programa de intervención multimodal: PRISMA. *Rev Colomb Psiquiatr [Internet].* 2015;44. Vol. 44. Núm. 02. Abril 2015-Junio 2015. Available from: <http://linkinghub.elsevier.com/retrieve/pii/S0034745015000384>.
26. Palacio-Ortiz J, Peña-Quintero C, Gomez-Valero M, Bustamante-Gomez P, Arroyave-Sierra P, Vargas-Upegui C, et al. Lifetime psychiatric disorders: A comparison study between offspring of parents with bipolar disorder type-I versus the offspring of community controls parents. *Rev Colomb Psiquiatr.* 2017;46:129-39.
27. Birmaher B, Axelson D, Monk K, Kalas C, Goldstein B, Hickey M, et al. Lifetime psychiatric disorders in school-aged offspring of parents with bipolar disorder: the Pittsburgh Bipolar Offspring study. *Arch Gen Psychiatry.* 2009;66:287-96. Epub 2009/03/04.
28. Nurnberger J, McClinnis M, Reich W, Kastelic E, Wilcox H, Glowinski A, et al. A high-risk study of bipolar disorder Childhood clinical phenotypes as precursors of major mood disorders. *Arch Gen Psychiatry.* 2011;68:1012.
29. Egeland J, Endicott J, Hostetter A, Allen C, Pauls D, Shaw J. A 16-year prospective study of prodromal features prior to BPI onset in well Amish children. *J Affect Disord.* 2012;142:186.
30. Mesman E, Nolen WA, Reichart CG, Wals M, Hillegers MHJ. The Dutch bipolar offspring study: 12 year follow-up. *Am J Psychiatry.* 2013;170:542-9.
31. Vandeleur C, Strippoli M, Castelao E, Gholam-Rezaee M, Ferrero F, Marquet P, et al. The Lausanne-Genève cohort study of offspring of parents with mood disorders: methodology, findings, current sample characteristics, and perspectives. *Soc Psychiatry Psychiatr Epidemiol.* 2017;52:1041.
32. Vieta E, Salagre E, Grande I, Carvalho AF, Fernandes BS, Berk M, et al. Early Intervention in Bipolar Disorder. *Am J Psychiatry.* 2018. [appi.ajp.2017.1](https://doi.org/10.1176/appi.ajp.2017.1).
33. Humanidades De D, Apartado B, España P. Universidad de Navarra Centro de Documentación de Bioética Declaración de Helsinki de la AMM - Principios éticos para las investigaciones médicas en seres humanos. 2013:1-8.
34. Nurnberger JI, Blehar MC, Kaufmann Ca, York-cooler C, Simpson SG, Harkavy-friedman J, et al. Diagnostic Interview for Genetic Studies Rationale Unique Features, and Training. *Arch Gen Psychiatry.* 1994:51.
35. Palacio CA, García J, Arbeláez MP, Sánchez R, Aguirre B, Garcés IC, et al. Validación de la entrevista diagnóstica para estudios genéticos (DIGS) en Colombia. *Biomedica.* 2004;24:56-62.
36. American Psychiatric Association. Diagnostic Statistical Manual of Mental Disorders, Fourth Edition, Text Revision (DSM-IV-TR). 4th ed. American Psychiatry Association., editor. Arlington: American Psychiatry Association Press; 2000.
37. Chang K, Steiner H, Ketter T. Studies of offspring of parents with bipolar disorder. *Am J Med Genet C Semin Med Genet.* 2003;123C:26-35.
38. Kaufman J, Birmaher B, Brent D, Rao U, Flynn C, Moreci P, et al. Schedule for Affective Disorders and Schizophrenia for School-Age Children-Present and Lifetime Version (K-SADS-PL): initial reliability and validity data. *J Am Acad Child Adolesc Psychiatry.* 1997;36(7):980-8. Epub 1997/07/01.
39. Ulloa RE, Ortiz S, Higuera F, Nogales I, Fresán A, Apiquian R, et al. Estudio de fiabilidad interevaluador de la versión en español de la entrevista Schedule for Affective Disorders and Present and Lifetime version (K-SADS-PL). *Salud Ment.* 2006;34:36-40.

40. de la Peña FR, Rossetti MF, Rodriguez-Delgado A, Villavicencio LR, Palacio-Ortiz JD, Montiel-Navas C, et al. Construct validity and parent-child agreement of the six new or modified disorders included in the Spanish version of the Kiddie Schedule for Affective Disorders and Schizophrenia Present and Lifetime Version DSM-5 (K-SADS-PL-5). *J Psychiatr Res.* 2018;101:28-33, <http://dx.doi.org/10.1016/j.jpsychires.2018.02.029>. Epub.
41. de la Peña FR, Ulloa RE, Villavicencio L, Palacio-Ortiz JD, Felix FJ, Larraguibel M, et al. Validity and Reliability of the Kiddie Schedule for Affective Disorders and Schizophrenia Present and Lifetime version DSM-5 (K-SADS-PL-5) Spanish version. *BMC Psychiatry.* 2018;18:193.
42. Shaffer D, Gould M, Brasic J, Ambrosini P, Fisher P, Bird H, et al. A Children's Global Assessment Scale (CGAS). *Arch Gen Psychiatry.* 1983;40:1228-31.
43. NSW Department of Health. Childrens Global Assessment Scale (CGAS). *Arch Gen Psychiatry.* 2002:1228-31.
44. Muneer A. Staging Models in Bipolar Disorder: A Systematic Review of the Literature. *Clin Psychopharmacol Neurosci.* 2016;14:117-30.
45. Birmaher B, Merranko JA, Goldstein TR, Gill MK, Goldstein BI, Hower H, et al. A Risk Calculator to Predict the Individual Risk of Conversion From Subthreshold Bipolar Symptoms to Bipolar Disorder I or II in Youth. *J Am Acad Child Adolesc Psychiatry.* 2018;57:755-63, e4.
46. Freeman AJ, Youngstrom EA, Frazier TW, Youngstrom JK, Demeter C, Findling RL. Portability of a screener for pediatric bipolar disorder to a diverse setting. *Psychol Assess.* 2012;24:341-51.
47. Goldstein, Tina PhD, Obreja MA, Shamseddeen MD, Boris Birmaher MD. Risk for Suicidal Ideation Among the Offspring of Bipolar Parents: Results from the Bipolar Offspring Study (BIOS). *Arch Suicide Res.* 2012;15:207-22.
48. Ostiguy CS, Ellenbogen MA, Linnen AM, Walker EF, Hammen C, Hodgins S. Chronic stress and stressful life events in the offspring of parents with bipolar disorder. *J Affect Disord.* 2009;114(1-3):74-84.
49. Wals M, Hillegers MHJ, Reichart CG, Verhulst FC, Nolen WA, Ormel J. Stressful life events and onset of mood disorders in children of bipolar parents during 14-month follow-up. *J Affect Disord.* 2005;87(2-3):253-63.
50. Benarous X, Consoli A, Milhiet V, Cohen D. Early interventions for youths at high risk for bipolar disorder: a developmental approach. *Eur Child Adolesc Psychiatry.* 2016;25:217-33.
51. Correll C, Cornblatt B. Summary - Review 2007 Early identification and high-risk strategies for bipolar disorder. *Bipolar Disord.* 2007:324-38.
52. Hafeman DM, Merranko J, Axelson D, Goldstein BI, Goldstein T, Monk K, et al. Toward the definition of a bipolar prodrome: Dimensional predictors of bipolar spectrum disorders in at-risk youths. *Am J Psychiatry.* 2016;173:695-704.
53. Vandeleur C, Rothen S, Gholam-Rezaee M, Castela E, Vidal S, Favre S, et al. Mental disorders in offspring of parents with bipolar and major depressive disorders. *Bipolar Disord.* 2012;14:641-53.
54. Fergus EL, Miller RB, Luckenbaugh DA, Leverich GS, Findling RL, Speer AM, et al. Is there progression from irritability/dyscontrol to major depressive and manic symptoms? A retrospective community survey of parents of bipolar children. *J Affect Disord.* 2003;77:71-8.
55. Findling RL, Youngstrom EA, McNamara NK, Stansbrey RJ, Demeter CA, Bedoya D, et al. Early symptoms of mania and the role of parental risk. *Bipolar Disord.* 2005;7:623-34.
56. Duffy A, Alda M, Crawford L, Millin R, Grof P. The early manifestations of bipolar disorder: A longitudinal prospective study of the offspring of bipolar parents. *Bipolar Disord.* 2007;9:828-38.
57. Mesman E, Nolen WA, Keijsers L, Hillegers MHJ. Baseline dimensional psychopathology and future mood disorder onset: findings from the Dutch Bipolar Offspring Study. *Acta Psychiatr Scand.* 2017;136:201-9.
58. Luby JL, Navsaria N. Pediatric bipolar disorder: Evidence for prodromal states and early markers. *J Child Psychol Psychiatry Allied Discip.* 2010;51:459-71.
59. Faedda GL, Baldessarini RJ, Glovinsky IP, Austin NB. Pediatric bipolar disorder: phenomenology and course of illness. *Bipolar Disord.* 2004;6:305-13.
60. Kiss E, Gentzler AM, George C, Kapornai K, Tamás Z, Kovacs M, et al. Factors influencing mother-child reports of depressive symptoms and agreement among clinically referred depressed youngsters in Hungary. *J Affect Disord.* 2007.