



# Water supply failure probability under influence of climate change - Balsillas river basin case study

## Probabilidad de fallo en el suministro de agua bajo influencia del cambio climático - Estudio de caso cuenca río Balsillas

Darwin Mena Rentería <sup>1</sup>, Eddy Michell Espinosa <sup>1</sup>, Paula Carolina Soler <sup>1</sup>, Miguel Cañón Ramos <sup>1</sup>, Freddy Santiago Duarte <sup>2</sup>, Jordi Rafael Palacios Gonzalez <sup>2,3\*</sup>

<sup>1</sup>Grupo de Investigaciones INAM-USTA, Programa de Ingeniería Ambiental, Universidad Santo Tomás. Cra. 9 # 51-11. C. P. 110231. Bogotá, Colombia.

<sup>2</sup>Centro de Estudios Hidráulicos, Escuela Colombiana de Ingeniería Julio Garavito, Programa de Ingeniería Civil, Garavito. AK 45 (Autonorte) # 205-59. C. P. 111171. Bogotá, Colombia.

<sup>3</sup>Grupo IDEASA, Escuela de Ciencias Exactas e Ingeniería (ECEI), Programa de Ingeniería Ambiental, Universidad Sergio Arboleda. C. P. 111071. Bogotá, Colombia.

### CITE THIS ARTICLE AS:

D. Mena, E. M. Espinosa, P. C. Soler, M. C. Ramos, F. S. Duarte and J. R. Palacios. "Water supply failure probability under influence of climate change Balsillas river basin case study", *Revista Facultad de Ingeniería Universidad de Antioquia*, no. 103, pp. 9-19, Apr-Jun 2022. [Online]. Available: <https://www.doi.org/10.17533/udea.redin.20201008>

### ARTICLE INFO:

Received: February 28, 2020

Accepted: October 19, 2020

Available online: October 19, 2020

### KEYWORDS:

Agroclimatology; agriculture; climate change adaptation; hydrology; water consumption

Agroclimatología; agricultura; adaptación al cambio climático; hidrología; consumo de agua

**ABSTRACT:** This project assesses the risk of water supply failure for the agricultural sector under climate change conditions by implementing hydrological models that support decision-making for satisfying consumptive demands in times of scarcity. This project was developed using hydrological modeling tools such as the HydroBID software and the SIMGES and SIMRISK water resource management models of AQUATOOL DSS. The flow series for a future scenario were obtained for different climate change scenarios from a Global Climate Model (GCM) and the Coordinated Regional Experiment on Climate Reduction (CORDEX) by downscaling the results from the global scale to basin-scale using a statistical method based on chaos theory. These projections show that under conditions of climate change, the agricultural sector of the Balsillas basin will not suffer significant impacts since they will be able to satisfy most demand points.

**RESUMEN:** Este proyecto evalúa el riesgo de falla del suministro de agua para el sector agrícola en condiciones de cambio climático mediante la implementación de modelos hidrológicos que apoyan la toma de decisiones para satisfacer las demandas de consumo en tiempos de escasez. Este proyecto se desarrolló a través de una metodología que utiliza herramientas de modelado hidrológico como el software HydroBID y los modelos de gestión de recursos hídricos SIMGES y SIMRISK de AQUATOOL DSS. Las series de caudales para un escenario futuro se obtuvieron para diferentes escenarios de cambio climático a partir de un Modelo Climático Global (GCM) y el Experimento Regional Coordinado de Reducción del Clima (CORDEX) reduciendo la escala de los resultados de la escala global a la escala de cuenca utilizando un método estadístico basado en la teoría del caos. Estas proyecciones muestran que, en condiciones de cambio climático, el sector agrícola de la cuenca del Balsillas no sufrirá impactos significativos ya que podrá satisfacer la mayoría de los puntos de demanda.

## 1. Introduction

Climate change is a natural process that has been accelerated by human influence due to the large amount of greenhouse gas emissions into the atmosphere. It is related to human development, population growth, and

\* Corresponding author: Jordi Rafael Palacios Gonzalez

E-mail: [jordi.palacios@usa.edu.co](mailto:jordi.palacios@usa.edu.co)

ISSN 0120-6230

e-ISSN 2422-2844



consumption patterns; this phenomenon, whether natural or anthropogenic, can generate serious consequences for the environment and humanity. Therefore, to prevent and mitigate this phenomenon's negative impacts on the environment, including its effects on the hydrological cycle in a particular region, it is necessary to develop techniques with sufficient technical and scientific quality [1].

Water shortage conditions tend to impact the hydrological services offered by the Andean basins in South America, severely impacting the different sectors of existing populations, making it necessary for decision-makers to create innovative solutions at the basin level. Integrated water resource management (IWRM) is a concept that aims to promote adequate planning and management of the resource to ensure its sustainability and conservation [2] so that decision-making measures and tools can be established reducing water availability risks for current and future scenarios. It is important to highlight that over the years, as the risk of water scarcity increases, the demand for water solutions increases; approximately 55% of the world population will face a water resource crisis by 2050 [3].

This crisis is related to aspects such as high levels of industrialization, population growth, and climate change; therefore, it is essential to take action to conserve water resources [2]. In Colombia, there is a constantly growing trend in agricultural areas. The demand for this sector depends on the climate (climate variability and climate change), which directly impacts the variation in demand and the water deficit of the sector [4]. The quality of life of the populations dependent on the agricultural sector would decrease dramatically in a water crisis, and negatively impact food security. In addition, there would be changes in the economic and productive sectors, with increases in the prices of products and a significant deterioration in crop yield [5].

Agriculture is one of the most vulnerable sectors to change in the future climate [6] and, as such, has been the subject of multiple studies in recent years [7–10]. Several quantitative assessments of vulnerability to climate change have been made through different analyses and comparisons of agricultural vulnerability in different regions of the world, generating composite indices based on sets of indicators [11]. Such indicators generally cover multiple dimensions of the concept of vulnerability, capturing the exposure, sensitivity, and adaptability of a system [12, 13].

In the case of Colombia, according to the Ministry of Agriculture and Rural Development, agricultural production at the national level has been affected by the occurrence of extreme weather events associated with

climate change. The above has generated impacts of great magnitude at the regional level, due to changes in the rainfall regime and the behavior of temperature, causing floods, landslides on cultivated land, proliferation of pests, changes in cultivation cycles and greater seasonality in the productive territory [14]. In this investigation, the risk of a water supply failure in the agricultural sector was evaluated using hydrological modeling tools, to support decision-making about the satisfaction of consumptive demands in times of shortage, taking into account the influence of climate change scenarios [15].

## 1.1 Case study

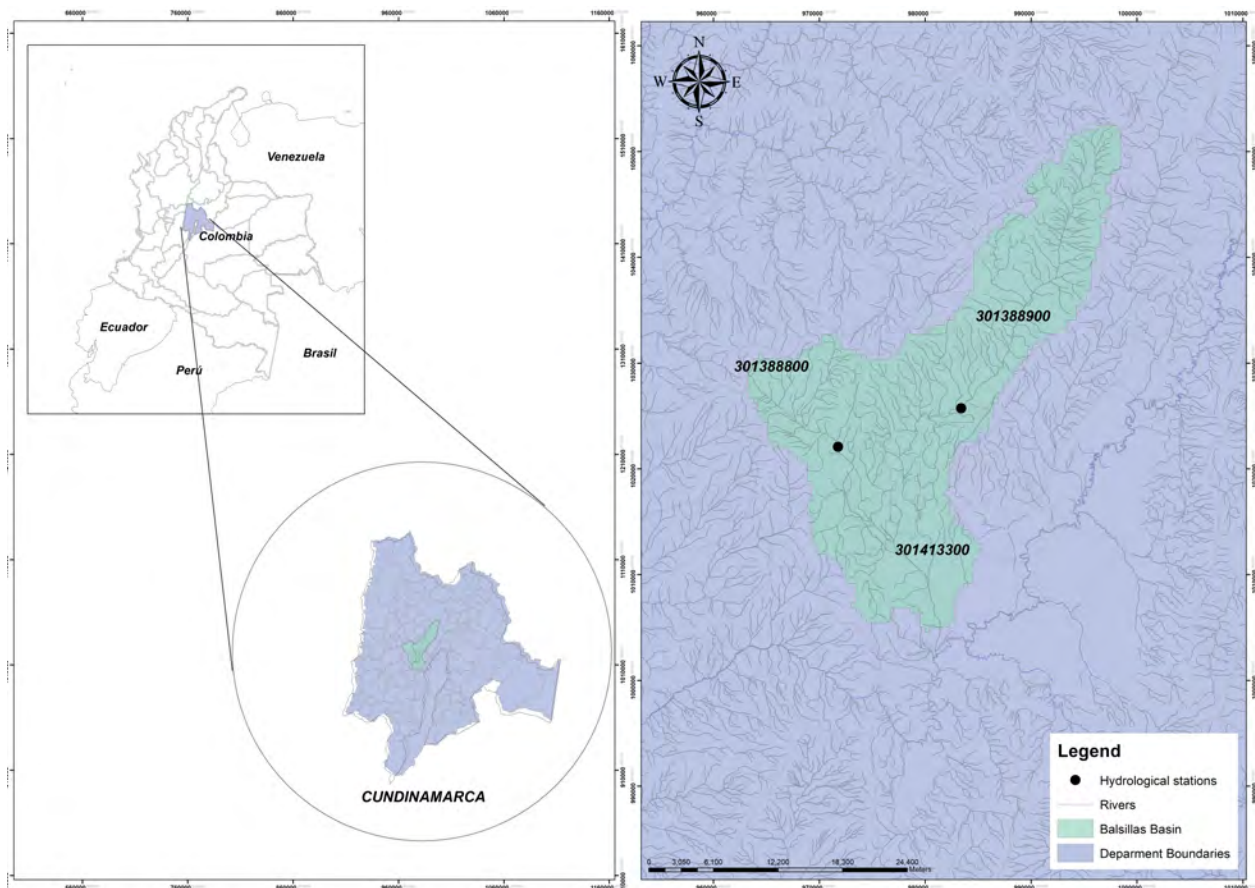
The Balsillas river basin is located in the Cundinamarca department in Colombia, belonging to the Bogotá river basin, as presented in Figure 1. The Balsillas river is mainly formed by the currents of the Bojacá and Subachoque rivers, which are its main tributaries [16].

The basin has a total area of 624 km<sup>2</sup>, and the main channel is 68.1 km long. It begins at an elevation greater than 3,700 m.a.s.l. and ends over 2,500 m.a.s.l.; the average elevation of the basin is 2,730 m.a.s.l.

About the topography, there are mountainous reliefs in the northern and eastern parts that cover 42.5% of the total area, where heavily wavy to heavily broken and steep reliefs predominate; while in the central and southern regions of the basin, floodplains are located, covering 43.2% of the total area. The remaining 14.2% of the basin are areas with wavy to sloping relief [16]. The landscape in this area is flat with cold and mostly dry weather conditions. The main vegetation cover present in the area is primary forests, stubble, thickets, and paramo vegetation. As for the type of soil, those with fine textures susceptible to water erosion predominate when there is no vegetation. In addition, there are sedimentation and wetland filling processes that generate flooding risk due to overflow and flooding when water levels increase significantly [16].

The soils are rich in nutrients, allowing agro-industrial activities with pea crops, cape gooseberries, strawberries, tomatoes, and pastures. These activities are essential for employment generation and economic growth for the community [5].

The primary use of water in the basin is for economic activities related to agriculture, generating an approximate demand of 3.3 m<sup>3</sup>/s, which has caused a decrease in the water resource amount. Other important demands are the ecological flow, with a requirement of 0.15 m<sup>3</sup>/s, domestic consumption, with 0.062 m<sup>3</sup>/s, and finally, the lowest demand is industrial, which requires 0.024 m<sup>3</sup>/s of



**Figure 1** Location of the Balsillas river basin **Source:** Authors

Balsillas river flow [16].

## 2. Materials and methods

The failure probability evaluation was developed by analyzing water resources management for different future scenarios. For this, future water availability was obtained through the water balance method using the Hydro-IDB tool, which is an integrated and quantitative system to simulate hydrology and water resource management in the Latin American and Caribbean regions, whose system applies the standardized Generalized Channel Load Factor (GWLFF) model in conjunction with a new time delay-routing methodology (lag-routing)[17]. This tool integrates an analytical hydrography database (AHD) that contains information on the topology of the basins, stream stretches, land use and cover, soil types, precipitation, temperature, and observed stream flows, which represents an advantage for its application in regions with little information.

The hydrological model requires input data, such as precipitation and temperature. The calibration is done

manually by trial and error, by changing the values of the curve number parameters (NC), the available water content in the soil (AWC), coefficient of recession (R), permeability coefficient (see page), ET factor of the growing season, ET factor for the latency season, and percentage of permeable cover. The general volume error, Pearson's correlation coefficient, modified Pearson's correlation coefficient, and Nash-Sutcliffe efficiency were used as efficiency indicators to evaluate the model's efficiency.

As a future large-scale climate dataset, the CORDEX experiment database was used for different scenarios of greenhouse gas concentrations (CPRs), applying different performance metrics for the selection of the best climate model that would adjust to the weather conditions of the study area. Likewise, a statistical downscaling method based on chaos theory was also applied, which relates the future climatology of the selected large-scale climate model to the local data at basin-scale obtained through climatological stations.

The Chaotic Statistical Downscaling model (CSD), presented in [18] and evaluated in [1], is a new statistical

downscaling method based on phase space reconstruction for different time steps, identification of deterministic chaos, and a general synchronization predictive model. We assessed the presence of deterministic chaos and the identification of the dynamic system movement type for different accumulation intervals by calculating the Lyapunov exponent for both the large-scale model and the local-observed system.

The CSD model has been used with relative success to predict both precipitation and temperature in different basins of Colombia, such as the Bogotá river basin and the Totaré river basin. As presented in [1, 18], the method was also compared with other downscaling techniques under three different error measures in these basins.

The process continues by next using AQUATOOL Decision Support System (DSS) [19], specifically, the module for simulating water resource systems management (SIMGES) [20] and the module for risk management evaluation (SIMRISK). Simulation in SIMGES consists of a conservative flow network optimized monthly by linear programming using the Out-of-Kilter algorithm [21] to maximize an objective function (demand satisfaction and storage of deposits) subject to mass conservation restrictions, the physical limits of flow transport in channels, and reservoir capacities. This simulation process for several scenarios is performed by running the SIMRISK model, which evaluates the short-, medium-, and long-term management risks for a given river basin [22]. The model will generate scenarios of multiple and future natural flows and simulate the management of the system according to the criteria previously defined for each scenario. This modeling is based on Monte Carlo simulation. This model's results are probabilistic information that allows analyzing the number and severity of failures in the system [23].

Although there is a wide variety of models that solve problems related to water management and planning through simulation and optimization models, SIMGES and SIMRIKS were selected because they are user-friendly. Their use does not present excessive computational costs [24].

This methodology is presented in Figure 2, and it consists of the following steps once the series of future flows is obtained through hydrological modeling incorporating the influence of climate change for the study area:

- I. With the series of flows generated, the water exploitation system's current characteristics, and the system management rules, a simulation of future water resource management in the basin is carried out.
- II. The results of the simulation are statistically analyzed

to obtain the failure probabilities for the agricultural sector demands.

- III. The information provided in the previous step determines the state of the system and supports the decision-making process on the failure probability's admissibility.
- IV. When the probability is not accepted, new management alternatives are established that feedback to the management simulation (Step 2). The following steps are repeated until a new decision is made about whether the ruling is acceptable.

## 3. Results and discussions

### 3.1 Hydro-BID calibration and validation

As a result of the calibration, the parameters' final values at the outlet of the basin were obtained. The following performance metrics were calculated daily and monthly: general error volume, correlation coefficient R, modified correlation coefficient, and coefficient of Nash-Sutcliffe efficiency.

From these results, it is evident that the calibration process was satisfactory, as shown in Figure 3. The performance metrics shown in Table 2 proved to be acceptable. Monthly values were found to be the best to determine that the model is functional, as these are within the ranges established by the Inter-American Development Bank (IDB).

It is important to note that changes in the calibration parameters significantly impact the simulated flows; therefore, as the curve number decreases, the flow rates decrease because the infiltration increases. Therefore, there is less runoff. Likewise, the water content in the soil (AWC) and the seepage influence the runoff's magnitude because if they increase, there is a greater impact on the low flow rates, so the infiltration increases. With respect to the recession coefficient (R) when modifying it, the flow curve slope increases, so that the runoff is increased and, therefore the flow rates have higher values.

Regarding the validation, once the calibration has been carried out, the model is run again for a later period, between 01/01/2005 and 12/31/2009, and the results obtained showed a similarity in the behavior of the flow duration curve between simulated and observed data, as shown in Figure 4; however, as in the calibration, the modeled flows were overestimated.

Concerning the validation performance metrics in Table 3, the monthly values are more accurate than the

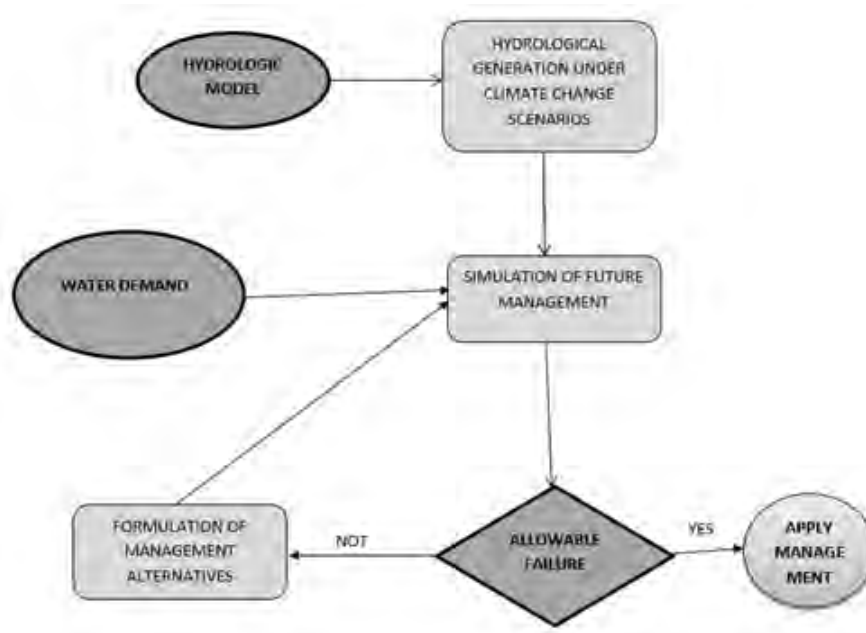


Figure 2 Methodological scheme Source: Authors

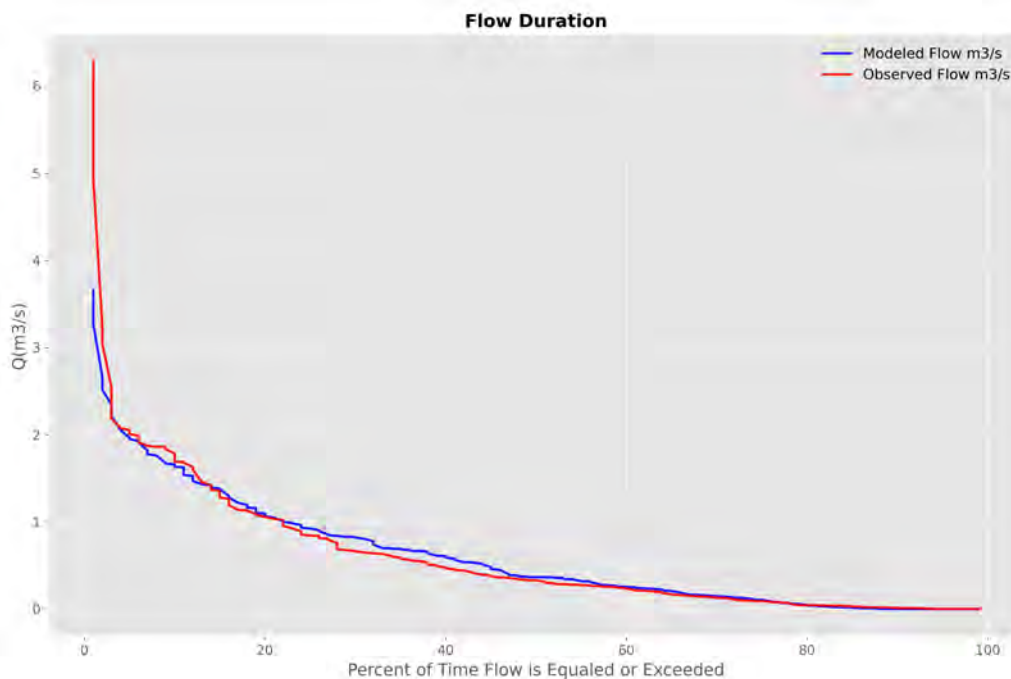


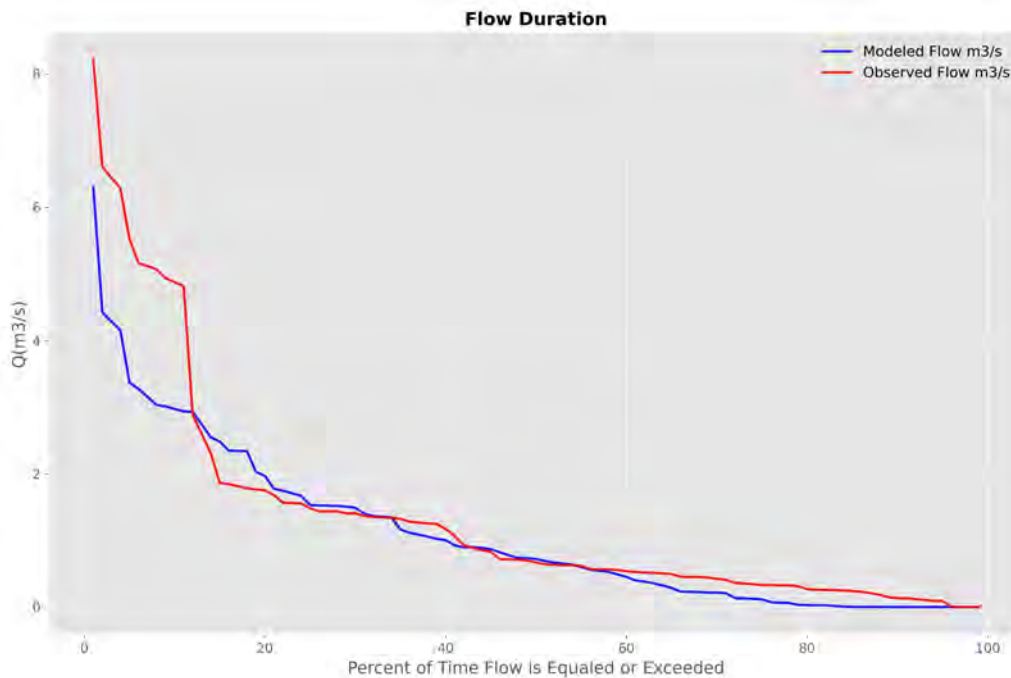
Figure 3 Flow duration curve – Calibration Source: Authors

daily data. They are within the ranges stipulated by the IDB, indicating that the model is functional.

The most sensitive parameters in the model are the curve number and the AWC since they are the ones that mainly control the amount of runoff generated throughout the basin. This is mainly because the curve number represents the level of waterproofing in the study area,

due to natural or anthropogenic conditions, favoring, or not, the infiltration processes by precipitation received in the soil, and the AWC determines the volume of water that can be absorbed before the soil reaches its saturation point; all the water received in the area will become runoff from that moment.





**Figure 4** Flow duration curve – Calibration **Source:** Authors

**Table 1** HydroBID calibration parameters **Source:** Authors

Parameters	Calibration values
Curve Number	0.8
AWC	0.9
R coefficient	0.008
Seepage	0.038
Grow season ET factor	1
Dormant season ET factor	1
Impervious cover percent	1

**Table 2** Performance metrics – Calibration **Source:** Authors

	Daily value	Monthly value	Optimal value
<b>Overall volume error, ove (%)</b>	11.85	4.66	0
<b>Correlation, r(-)</b>	0.56	0.69	1
<b>Modified Correlation, Rmod</b>	0.35	0.42	1
<b>Nash-Sutcliffe Efficiency, R<sup>2</sup></b>	0.31	0.47	Good 0.4–0.6 Very good 0.61–0.8 Excellent > 0.81

**Table 3** Flow duration curve – Validation **Source:** Authors.

	Daily value	Monthly value	Optimal value
<b>Overall volume error, ove (%)</b>	-6.84	-17.55	0
<b>Correlation, r(-)</b>	0.54	0.64	1
<b>Modified Correlation, Rmod</b>	0.46	0.41	1
<b>Nash-Sutcliffe Efficiency, R<sup>2</sup></b>	0.2	0.38	Good 0.4–0.6 Very good 0.61–0.8 Excellent > 0.81

of the mean, maximum, minimum, standard deviation, correlation coefficient, wet/cold days, and warm/dry days for each model and CORDEX scenario. For precipitation, the climate model that best fit was the CORDEX experiment with the MPI-ESM-MR model. The values resulting from the comparison can be found in Table 4.

This model was chosen because there is a similar behavior in the interannual variation in multiannual monthly precipitation graphs (see Figure 5). It also presents the best correlation of all evaluated models. In relation to the criteria of dry and wet days, the percentage of error is minimal, indicating a similarity between the data.

### 3.2 Global Circulation Model (GCM)

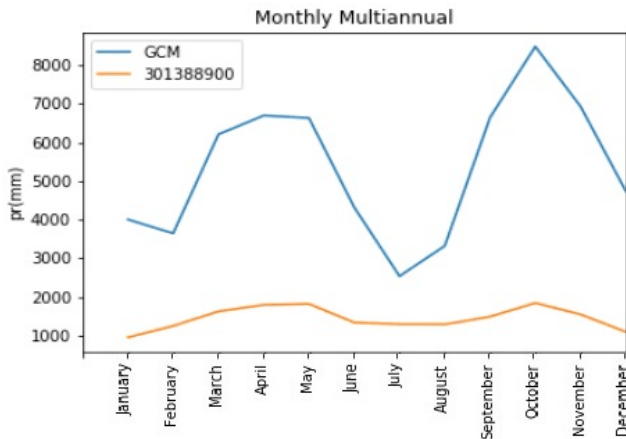
The selection of the climate model that best fits the local conditions is made by comparing the error rates

**Table 4** Results comparison criteria MPI-ESM-MR CORDEX **Source:** Authors

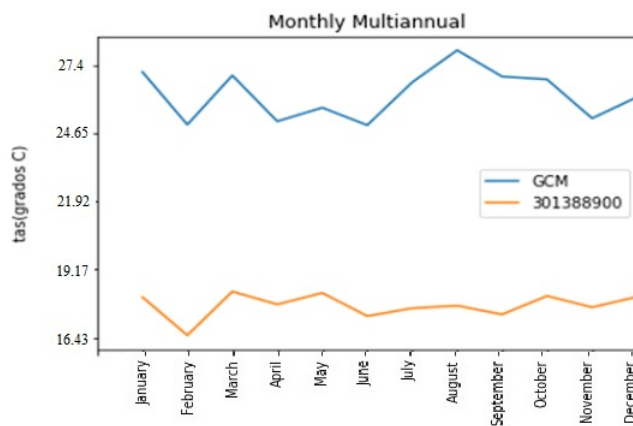
Model	Subbasin	Media	Max	Min	Desv	Corr	wet/cold days	warm/dry days
MPI	301413300	392.15	404.13	Inf	423.76	0.04	0	3.42
	301388900	271.05	275.89	Inf	363.5	0.03	0.48	0.32
	301388800	263.99	258.65	Inf	349.31	0.03	0.16	0.96

**Table 5** Results comparison criteria MPI-ESM-MR

Model	Subbasin	Medium	Max	Min	Desv	Corr	wet/cold days	warm/dry days
MPI	301413300	35.43	40.22	38.71	101.86	0.03	7.17	0
	301388900	48	49.67	55.13	101.52	0.05	3.72	0.16
	301388800	39.49	42.93	42.92	105.19	0.04	1.74	0.64



**Figure 5** Comparison of GCM data vs. historical precipitation data for Sub-basin 301388900 **Source:** Authors



**Figure 6** Comparison of GCM data vs. historical precipitation data for Sub-basin 301388900 **Source:** Authors

For temperature, the climate model that best fits was the GCM experiment with the MPI-ESM-MR model [25]. The values resulting from the comparison can be found in Table 5. At the graphic level, an adjustment of the model data is observed with the data of the series

observed in the basin (Figure 5, Figure 6).

### 3.3 Downscaling Results

In the case of precipitation, an increase is shown with respect to the average value for mid-century, around 2050-2075 (MOC), and by the end of it, 2075-2100 (EOC). In the case of RCP 2.6, an average increase of 1.83% is presented for the MOC and 4% for the EOC. For RCP 4.5, an increase of 6.53% is shown for MOC and 6.9% for EOC. Finally, for the RCP 8.5 scenario, there are 7.43% increases for MOC and 7.97% for EOC. In relation to the temperature for the RCP 2.6 and RCP 4.5 scenarios, there are increases both for the mid-century (MOC) and for the end of the century (EOC), on average 0.17% and 0.23%, respectively. Compared to RCP 8.5 the temperature shows a decrease of -0.43% for the MOC and -0.60% for the EOC. By applying the climatological data obtained through the scale reduction method and then integrating them into the HydroBID model, the flows were obtained for the periods from 2014 to 2040, 2040 to 2070, and 2070 to 2100. When carrying out this modeling, different variations were obtained that directly affect the basin's hydrological regime. As can be seen in Figure 7, the flows gradually increase for each RCP over the period between 2014 and 2100. In the case of RCP 8.5, the largest flows are present since the registered peaks reach approximately 7 m<sup>3</sup>/s, so it is inferred that the runoff processes are higher. However, the flows for RCP 4.5 fluctuate between 1 at 3 m<sup>3</sup>/s, and there are certain peaks close to 5 m<sup>3</sup>/s towards the period from 2030 to 2034. For RCP 2.6, the basin's flow levels have the smallest values where the most significant minimum flows are presented; the results reach approximately 2 m<sup>3</sup>/s (Figure 7).

As presented in Table 6 for RCP 2.6, the average of the flow data is close to 1.28 m<sup>3</sup>/s, which corresponds to an increase of 5.2% compared to current conditions. However, in reference to RCP 4.5% of the simulated flows correspond to 1.24 m<sup>3</sup>/s, which represents an increase of 2.1%. Finally, for the scenario corresponding to RCP 8.5,

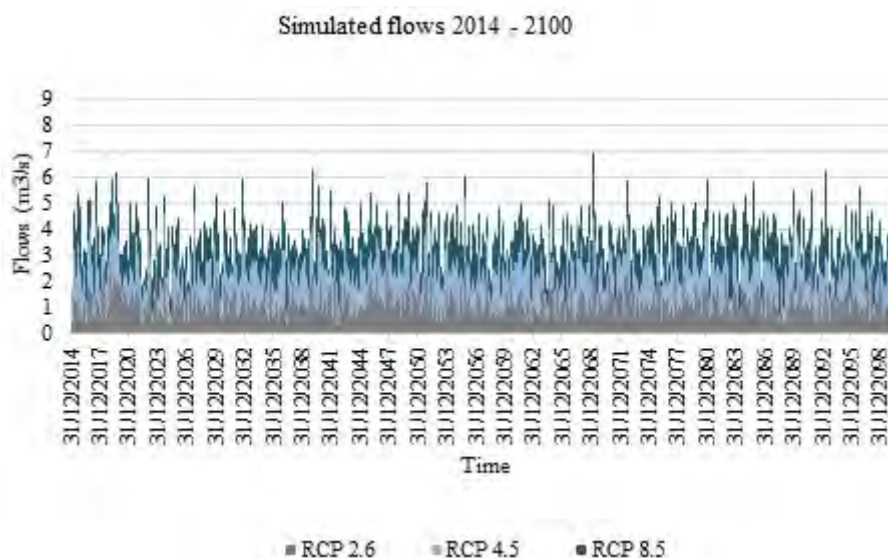


Figure 7 Simulated Flows 2014-2100 - HydroBID Source: Authors.

the flow data presents an average of 1.29 m<sup>3</sup>/s, indicating an increase of approximately 6% compared to the basin's historical flow data.

Table 6 Percentage of variation and average flow under climate change scenarios Source: Authors

SCENARIO	AVERAGE (m <sup>3</sup> /día)	PERCENTAGE CHANGE
Current	1.22	-
RCP 2.6	1.28	5.28%
RCP 4.5	1.24	2.12%
RCP 8.5	1.29	6.02%

### 3.4 Modeling in SIMGES and SIMRISK

Figure 8 shows the topology of the Balsillas river basin in terms of demand points for agricultural use identified in the area. The structure begins with the main contribution in the upper part of the basin, followed by identifying 20 points of consumption along the river sections. The results for modeling in SIMGES are presented in the graphic and through tables in which the deficit reached by each demand point can be seen. 20 results were obtained by identifying that under the established assumptions of flow and demand for the study, deficits were presented in 9 of all consumption points. The average deficit value is 0.0004 Hm<sup>3</sup>, which corresponds to 30% of the total demand at each point. Table 7 shows the maximum deficit reached in each of the climate change scenarios.

The probability of failure to guarantee the total demand is below 40% on average. Considering the 20 consumption points, as shown in Figure 9, the percentages of failure

Table 7 Maximum deficit reached under each climate change scenario Source: Authors

SCENARIO	MAXIMUM DEFICIT (HM <sup>3</sup> )
RCP 2.6	0.0025
RCP 4.5	0.004
RCP 8.5	0.004

probability range from 20 to 40% in climate change scenario, indicating that the highest percentage of failure occurs in November and December and the lowest between April and May. It should be noted that the points with a higher probability of failure are present in the middle part of the basin. However, some points do not present any probability of supply failure; in addition, these failures are generally presented on a 30–60% supply

## 4. Conclusion

For the Balsillas river basin, agricultural production changes are estimated due to variations in temperature and precipitation, which directly impact crop yields. Under the conditions of scenarios RCP 2.6, RCP 4.5 RCP 8.5, the climatic variables will increase between the years 2035 to 2065, so that these conditions are expected to influence the production of representative crops in the area.

The climate change conditions of each RCP scenario influence the availability of the basin to supply water to the different demand points. For the years between 2035 and 2065, an increase in the water supply is estimated. For RCP 2.6, the flow data is expected to present a 5.2% growth, corresponding to an average of 1.28 m<sup>3</sup>/s. For the



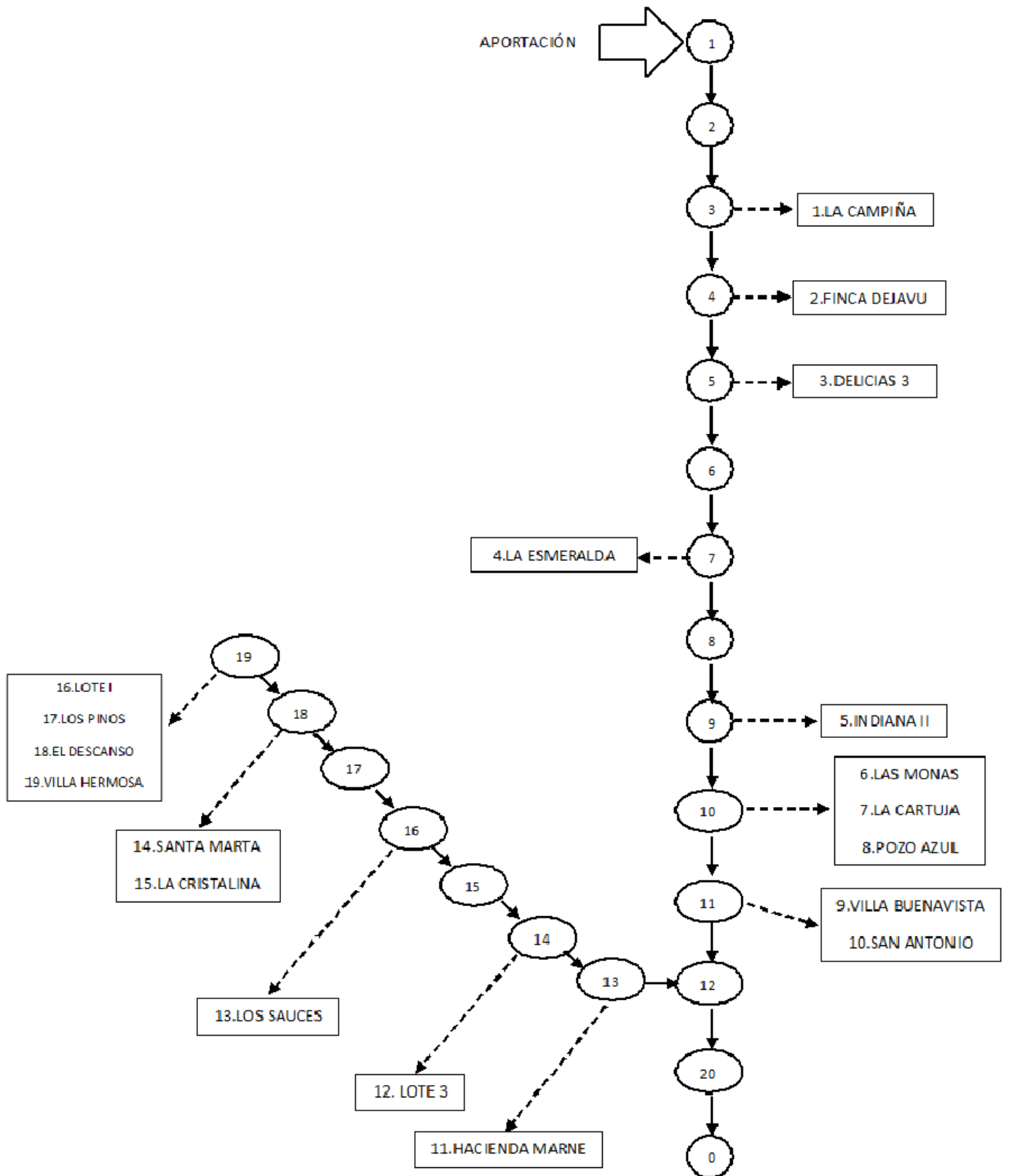


Figure 8 Structure of agricultural demands of the Balsillas river Source: Authors

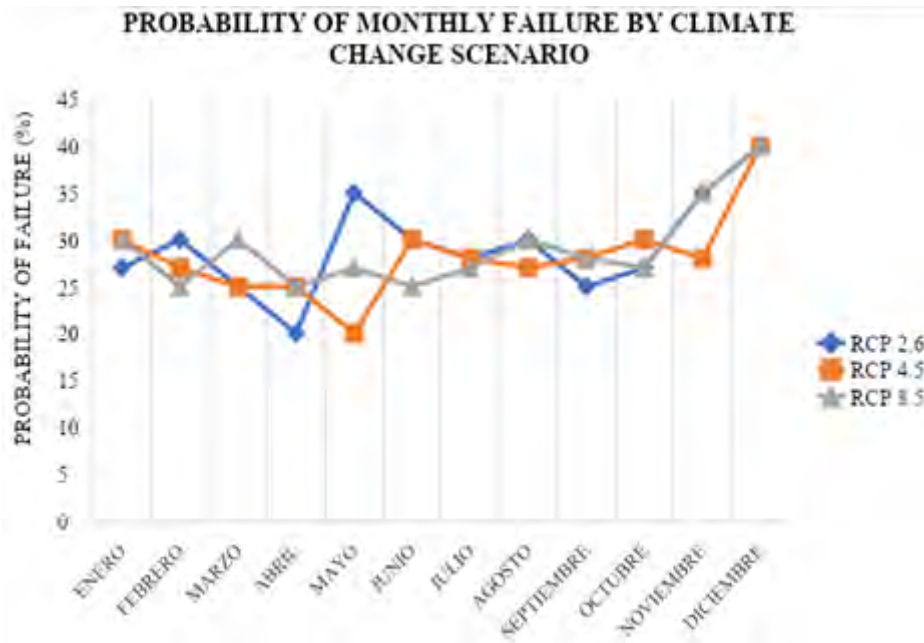


Figure 9 Probability of monthly failure under climate change scenarios Source: Authors

RCP 4.5, a 2.1% rise is expected, which corresponds to an average of 1.24 m<sup>3</sup>/s, and finally, in RCP 8.5, the flow data presents an average of 1.29 m<sup>3</sup>/s, indicating a build-up of approximately 6%. However, it also predicts an increase in agricultural use consumption due to the increase in the Gross Domestic Product (GDP) for future periods, so the supply will not be sufficient for the projected demand.

The deficit corresponds to about 30% of the total demand at each point, which corresponds to 0.0004 Hm<sup>3</sup>, so it is estimated that for 2035–2065 the basin will not fully meet the demands for agricultural use in the area, since there is a risk of failure at certain points; however, the probability of this happening is below 40%. Only 9 of the 20 points of agricultural demand presents a risk of failure.

The presented methodology provides the possibility of generating an adequate analysis of the water supply and demand relationship, which is essential for water planning and management in water deficit basins since it allows inferring rules and policies for the use of the resource. In addition, the introduction of water resources management rules that incorporate the risk associated with the decision and provides decision-makers with the security and confidence to contemplate the system globally or each of its components.

## 5. Declaration of competing interest

We declare that we have no significant competing interests including financial or non-financial, professional, or

personal interests interfering with the full and objective presentation of the work described in this manuscript.

## 6. Acknowledgments

The author(s) wish to thank the Research Fund (FODEIN) of the University of Santo Tomás, the CAR, the IDEAM, all entities that provided information, and the people who contributed in some way to this work.

## References

- [1] F. Duarte, J. R. Palacios, and G. R. Santos, "Evaluation of threats to agriculture in the totaré river basin due to changes in rainfall patterns under climate change scenarios," in *Advances in Information and Communication Technologies for Adapting Agriculture to Climate Change II*, J. C. Corrales, P. Angelov, and J. A. Iglesias, Eds. Springer International Publishing, 2018, pp. 234–248.
- [2] Ministerio de Ambiente, Vivienda y Desarrollo Territorial, *Política Nacional para la Gestión Integral del Recurso Hídrico*. Bogotá, Colombia: Ministerio de Ambiente, Vivienda y Desarrollo Territorial, 2010.
- [3] M. A. Mariño and S. P. Simonovic, "Integrated Water Resources Management," in *International Symposium on Integrated Water Resources Management*, Davis, California, USA, 2000.
- [4] Instituto de Hidrología, Meteorología y Estudios Ambientales, *Estudio Nacional del Agua 2018*. Bogotá, Colombia: Instituto de Hidrología, Meteorología y Estudios Ambientales, 2019.
- [5] G. C. Nelson and *et al*, *Cambio Climático. El impacto en la agricultura y los costos de adaptación*. Washington, D.C.: Instituto Internacional de Investigación sobre Políticas Alimentarias IFPRI, 2009.
- [6] O. Ocampo, "El cambio climático y su impacto en el agro," *Revista de Ingeniería*, no. 33, pp. 115–123, 2011.
- [7] P. Smith and *et al*, "Agriculture, Forestry and Other Land Use (AFOLU)," in *Climate Change 2014: Mitigation of Climate Change*.

- Contribution of Working Group III to the Fifth Assessment Report of the Intergovernmental Panel on Climate Change*, O. Edenhofer and *et al.*, Eds. Cambridge, UK and New York, USA: Cambridge University Press, 2014, pp. 811-922.
- [8] C. Bryant, N. Carvajal, K. Delusca, O. Daouda, and A. Sarr, "Metropolitan vulnerability and strategic roles for periurban agricultural territories in the context of climate change and variability," *Cuadernos de Geografía: Revista Colombiana de Geografía*, vol. 22, no. 2, pp. 55-687, Jul. 2013.
- [9] R. Macías and *et al.*, "Vulnerability to climate change of smallholder cocoa producers in the province of Manabí, Ecuador," *Revista Facultad Nacional de Agronomía Medellín*, vol. 72, no. 1, January 2019. [Online]. Available: <http://dx.doi.org/10.15446/rfnam.v72n1.72564>
- [10] J. P. Serna and J. E. Cañón, "Projecting the future of Ayapel Ciénaga: A hydroecologic analysis under climate change scenarios," *Revista Facultad de Ingeniería Universidad de Antioquia*, no. 95, April 2020. [Online]. Available: <http://dx.doi.org/10.17533/udea.redin.20190940>
- [11] Z. Dong and *et al.*, "A novel method for quantitatively evaluating agricultural vulnerability to climate change," *Ecol. Indic.*, vol. 48, January 2015. [Online]. Available: <https://doi.org/10.1016/j.ecolind.2014.07.032>
- [12] L. Wiréhn, T. Opach, and T. S. Neset, "Assessing Agricultural Vulnerability to Climate Change in the Nordic Countries—An Interactive Geovisualization Approach," *J. Environ. Plan. Manag.*, vol. 60, no. 1, 2017. [Online]. Available: <https://doi.org/10.1080/09640568.2016.1143351>
- [13] T. S. Neset, L. Wiréhn, T. Opach, E. Glaas, and B. O. Linnér, "Evaluation of indicators for agricultural vulnerability to climate change: The case of Swedish agriculture," *Ecol. Indic.*, vol. 105, October 2019. [Online]. Available: <https://doi.org/10.1016/j.ecolind.2018.05.042>
- [14] T. Blonch. (2011, Sep) *NegociosInclusivos.org*. [Online]. Available: <https://n9.cl/rok9i>
- [15] M. E. Fernández, "Efectos del cambio climático en la producción y rendimiento de cultivos por sectores. Evaluación del riesgo agroclimático por sectores," Fondo financiero de Proyectos de Desarrollo-FONADE, Instituto de Hidrología, Meteorología y Estudios Ambientales-IDEAM, Tech. Rep. CO-T1150, Mar. 2013.
- [16] W. N. Adger and *et al.*, "Assessment of adaptation practices, options, constraints and capacity," in *Climate Change 2007: Impacts, Adaptation and Vulnerability. Contribution of Working Group II to the Fourth Assessment Report of the Intergovernmental Panel on Climate Change*, M. L. Parry and *et al.*, Eds. Cambridge, UK: Cambridge University Press, 2007, pp. 717-743.
- [17] F. Moreda, W. Miralles, and R. Muñoz, "Hydro-BID: An integrated system for modeling impacts of climate change on water resources. Part 2," Inter-American Development Bank, Tech. Rep. IDB-TN-529, Dec. 2014.
- [18] F. Duarte, G. Corzo, G. Santos, and O. Hernández, "Chaotic statistical downscaling (CSD): Application and comparison in the Bogotá river basin," in *HIC 2018. 13<sup>th</sup> International Conference on Hydroinformatics*, 2018, pp. 626-634.
- [19] J. Andreu, J. Capilla, and E. Sanchís, "AQUATOOL, a generalized decision-support system for water-resources planning and operational management," *Journal of Hydrology*, vol. 177, no. 3-4, April 1 1996. [Online]. Available: [https://doi.org/10.1016/0022-1694\(95\)02963-X](https://doi.org/10.1016/0022-1694(95)02963-X)
- [20] *Modelo SIMRISK de Simulación múltiple de la Gestión de Recursos Hídricos con estimación del riesgo, incluyendo Utilización Conjunta*, Versión 2.4 ed., Universidad Politécnica de Valencia, 2007.
- [21] S. H. Bazaraa, J. J. Jarvis, and H. D. Sherali, *Linear Programming and Network Flows*, 4th ed. New Jersey: John Wiley & Sons, 2011.
- [22] S. Suárez, M. Pedro, J. Paredes, J. Andreu, and A. Solera, "Linking pan-european data to the local scale for decision making for global change and water scarcity within water resources planning and management," *Sci. Total Environ.*, vol. 603-604, December 15 2017. [Online]. Available: <https://doi.org/10.1016/j.scitotenv.2017.05.259>
- [23] A. Avilés, A. Solera, J. Paredes, and M. Pedro, "Integrated methodological framework for assessing the risk of failure in water supply incorporating drought forecasts. Case study: Andean regulated river basin," *Water Resour. Manag.*, vol. 32, November 2017. [Online]. Available: <https://doi.org/10.1007/s11269-017-1863-7>
- [24] A. Avilés and A. Solera, "Estimación del riesgo de fallo en el suministro de agua como ayuda a la planificación y gestión de recursos hídricos," *MASKANA*, vol. 3, no. 2, December 2012. [Online]. Available: <https://doi.org/10.18537/mskn.03.02.06>
- [25] *Metodología para incluir variabilidad climática y escenarios de cambio climático en el modelo weap de la macro cuenca del Magdalena y resultados de las simulaciones*, The Nature Conservancy (TNC), United States Agency for International Development (USAID), Bogotá, Col, 2014.