

Determination of Environmental Flows for the Barbuda Stream in the Municipality of Olaya, Antioquia, Colombia

Estimación de caudales ecológicos, quebrada La Barbuda, Municipio de Olaya, Antioquia, Colombia

Juan Pablo García-Montoya ^{1*}, T Vanwalleghem ², Juan V. Giráldez ², J Morató ³, Jorge Ignacio Montoya-Restrepo¹

¹Facultad de Ingeniería, Institución Universitaria Tecnológico de Antioquia. Calle 78 B #72A-220. C. P. 050034. Antioquia, Colombia.

²Departamento de Agronomía, Universidad de Córdoba. Campus Universitario de Rabanales, Ctra. Madrid km 396. C. P. 14071. Córdoba, España.

³ESEIAAT, Universitat Politècnica de Catalunya-BarcelonaTech. Colom, 1. C. P. 08222. Terrassa, Espanya.

ARTICLE INFO:

Received: June 06, 2018

Accepted: February 19, 2019

AVAILABLE ONLINE:

February 20, 2019

KEYWORDS:

Drought, liquid Flow, evapotranspiration, run-off, watersheds

Sequía, caudal, evapotranspiración, escurrimiento, cuencas

ABSTRACT: Environmental flow determination is important for the management of rivers and reservoirs. This parameter allows us to calculate the water supply of basins and minimize environmental impacts associated with water harvesting. In the past, research has been performed to determine environmental flows in rivers of Antioquia. However, the results did not include annual weather variation. Mean environmental flows, evapotranspiration and infiltration in the area have been calculated with the rainfall data registered in the Olaya station during 20 years and the basin morphometric parameters. The collected data were used to build a mathematical model in MATLAB and determine the environmental flows with the Range of Variability Approach (RVA) method for each month of the year and ENSO periods. The model can be used to determine environmental flows in similar basins using new rainfall data and morphometric parameters.

RESUMEN: La determinación de los caudales ecológicos en fuentes es de gran importancia para el manejo de ríos y embalses, pues se puede determinar la oferta hídrica de las fuentes y ver si son aptas para los diferentes aprovechamientos antrópicos que se quieran realizar. Aunque se han adelantado algunos estudios para determinar los caudales ecológicos en cuencas de la región, los resultados obtenidos no tienen en cuenta la variabilidad hidrológica que se presenta durante el año. A partir de series de lluvia medidas por la estación Olaya durante un periodo de 20 años y parámetros geomorfológicos de la cuenca, se estimó la evapotranspiración, infiltración y escorrentías. Luego se realizó un balance hidrológico para establecer series de caudales medios. Con las series estimadas se construyó un modelo, con el fin de determinar los caudales ecológicos, mediante el método de Rango de Variabilidad Aproximado (RVA), para años de regímenes climáticos normales y con fenómenos del Niño y La Niña. El modelo puede ser replicado para otras cuencas que presenten condiciones similares, al introducir nuevos datos de precipitación y caudal.

1. Introduction

Performing studies for determining environmental flows is part of a comprehensive management of basins and operation of rivers, reservoirs and aqueducts [1]. Environmental flows define the quantity, timing and quality of river flows needed to preserve freshwater ecosystems while assuring the continuity of human use.

Insofar as they reduce water availability, and agricultural and industrial uses, Environmental Flow represents a constraint, but they also hold out new opportunities for development [2].

Environmental flows allow us to maintain the functionality and structure of aquatic systems and associated terrestrial systems in a sustainable way [3]. This contributes to keep rivers or transitional waters in good condition, and to achieve their ecological potential [4].

There are various methodologies for calculating environmental flows, such as hydrological methods,

* Corresponding author: Juan Pablo García Montoya

E-mail: jpgarcia@tdea.edu.co

ISSN 0120-6230

e-ISSN 2422-2844



historical flow rates, hydraulic flow rates, habitat simulation and holistic methods [5]. These methods are the Natural Flow Regime, the Basic Flow Maintenance (QBM) and the Tessman method [6]. Some of these methods do not take the annual climate variability and effects of ENSO phenomena. For this study, the environmental flows were determined using the Range of Variability Approach RVA. The advantages of using RVA method is that it incorporates the hydrological and flow variability into environmental flow regime [7].

There are currently no estimations on a monthly and seasonal basis of environmental flows in the area. The Regional Autonomous Corporation estimates baseflow rates to determine the supply of water sources and manage resources, which are regularly updated. However, these values do not take seasonal variability into account. One of the existing studies for determining environmental flows in the area was performed by Universidad Nacional de Colombia [8]. Thus, the purpose of this research project is to create a calculation model to determine environmental flows taking into account variations of rainfall regimes from month to month and year to year.

In order to determine environmental flows for the water source, monthly rainfall registers of the most representative stations in the area, which are Olaya, Cotové, Juan García and Belmira [9]. Geomorphological parameters were also used in order to perform a hydrological balance of the basin that takes into account rainfall, aquifers, evaporation and infiltration. With this information, monthly mean flow rates of the water source were determined.

The study aims to establish the environmental flows with the RVA method, using rainfall, infiltration and evaporation as main input data. This framework is especially useful in basins without flow rate registers.

2. Materials and methods

2.1 Collection of secondary information

The basin of the Barbuda Stream is located in the Municipality of Olaya, Antioquia, in the North West of Colombia. It is the source of the water supply system in the municipality, and flows into the Cauca River.

The monthly rainfall data series of the stations Olaya, Juan García (Liborina), Cotové (Santa Fe de Antioquia) and Belmira were analyzed, [10] (IDEAM). The data series ranged from 1990 until 2014.

The area's topography and the cartographic plates from the Institute of Geography Agustín Codazzi [11]

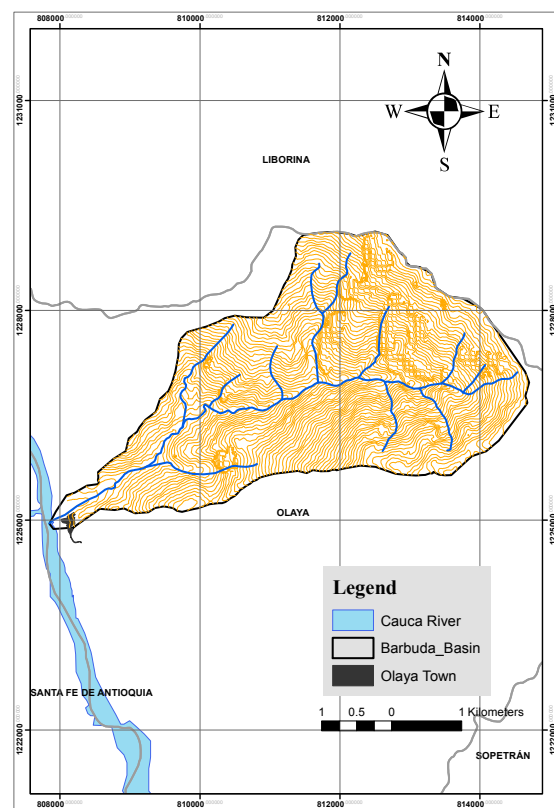


Figure 1 Demarcation of the Barbuda stream's basin

(IGAC) were used to demarcate the basin. Likewise, the drainage network and heights above sea level at which the basin is located were established. Figure 1 shows a panoramic image of the basin. Based on the previous data, we obtained the geomorphological parameters of the water source. These will allow us to determine unknown variables of the site that have not been measured, such as evapotranspiration.

Previous hydrological studies contained in the Master Plan for the Water Supply and Sewage Systems [12], Wastewater Discharge Management and Sanitation Plan [13] and Program for the Efficient Use and Saving of Water of the Water Supply System [14] were checked. These studies have climatic and geomorphological data from the studied region. Apart from information about rainfall, aquifer contribution and soil infiltration rates, these studies include water source gauges. These data were used to describe the research area and to establish basic parameters of the hydrological balance.

2.2 Collection of primary information: Fieldwork

Gauges were performed in conjunction with the company in charge of the water supply system Regional de Occidente



Figure 2 Place chosen for gauge in the Barbuda stream

S.A. E.S.P. Speed-area methods were employed. These methods are based on the assessment of cross sections and flow rates per section through the use of floating devices. In addition, a rain gauge was placed in the water treatment plant operated by Regional de Occidente in order to assess rainfall in the area from January 2014 to October 2014. The activities mentioned were performed for the purpose of assessing the models. These models were calibrated to establish correlations between parameters such as rainfall, evaporation and flow rate.

Selection of sampling sites

The gauges were performed at the water intake of the water supply system, located 1 km from the urban area. The rain gauge system was placed in the Municipality of Olaya's water treatment plant.

Gauging methodology and samples

The research followed the protocols of water monitoring established by [15] the Guidelines for Sanitation in Rural Municipalities and Small Communities [16].

IDEAM's gauging methodologies recommend taking sections through which no more than 10% of the flow rate goes through because of the normal water source flow rate and the transverse length of the stream channel. To measure the total area, it was divided into five sections, facilitating the measurement of depth and width to approximate each section to selected geometric shapes. Then, the floating devices were thrown 2 m away in order to determine their speed by recording the time it took to cover the established distance. Figure 2 shows the place chosen for the activity.

Recording in digital format and data analysis

The information collected in the flow rate and rainfall gauges was recorded in formats established for performing the activity. Regarding the flow rate gauges, the measures obtained with the monthly records (Figure 3) were compared.

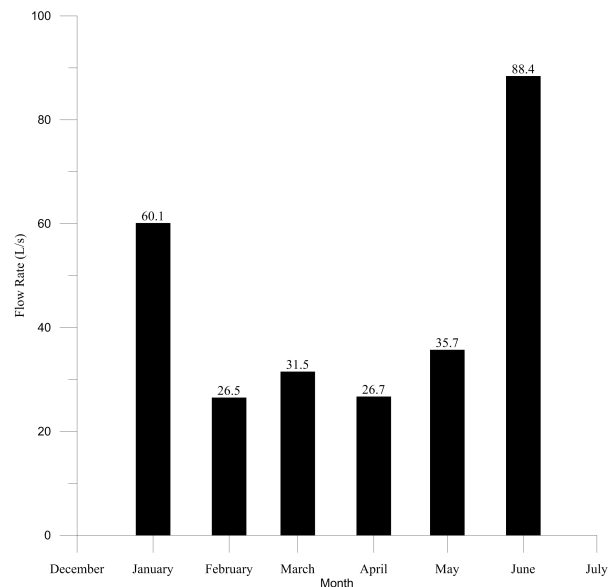


Figure 3 Barbuda Stream Gauges

In the case of rainfall, monthly rainfall accumulated amounts were measured. They were compared with rainfall data recorded by the Olaya station during the same month.

Figure 4 shows the rainfall recorded during the measuring activities in 2014.

Secondary information

As mentioned earlier, we collected rainfall data recorded by the stations nearby the basin between 1990 and 2014 (Figure 5). They were used to determine monthly rainfall maximum and minimum, as well as the mean rainfall. Figure 6 shows the rainfall average recorded by the selected stations.

Figure 7 shows the maximum rainfall recorded by month in the Olaya station. It must be noted that it did not take place consecutively in a single year.

Figure 8 shows the minimum rainfall recorded by month. It must be noted that it did not take place consecutively in a single year.

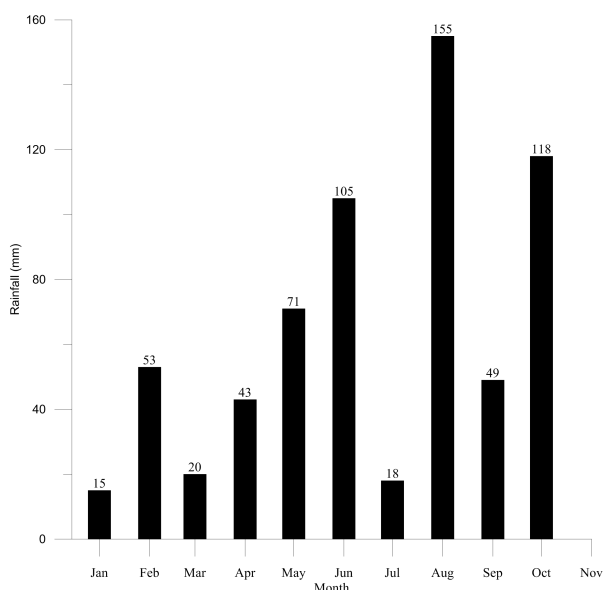


Figure 4 Rainfall Recorded in the Municipality of Olaya in 2014

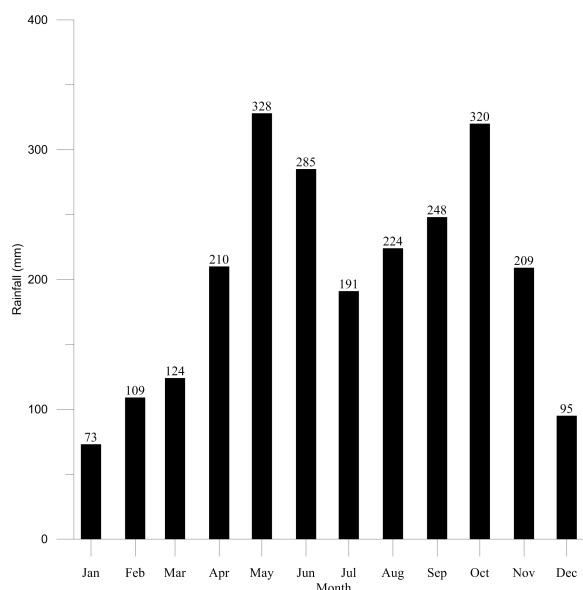


Figure 6 Maximum Rainfall recorded monthly during 20 Years

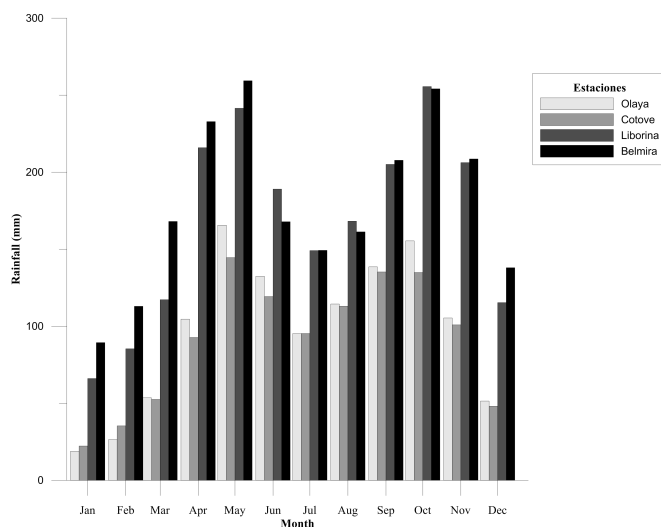


Figure 5 Mean Rainfall Recorded in Weather Stations of the Area

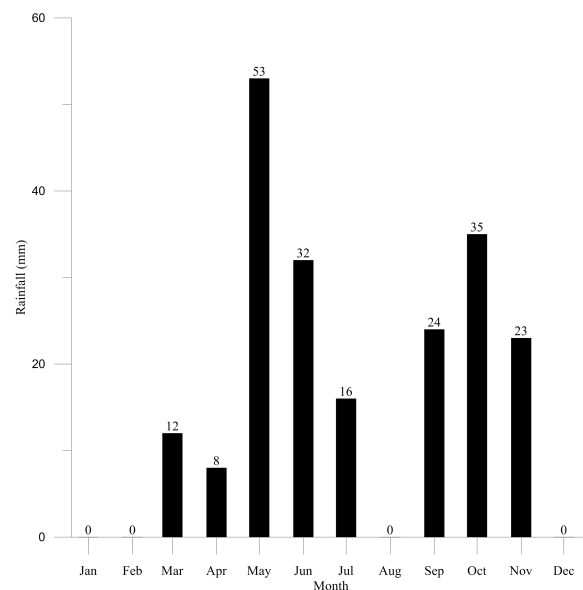


Figure 7 Minimum Rainfall recorded monthly during 20 Years

The basin morphometric parameters were consulted from Master Plan for the Water Supply and Sewage Systems Studies. Table 1 shows the main parameters of the studied basin.

Maximum number of sunshine hours

By using the tables that relate the hours of solar radiation to the latitude where the area studied is located [17], we checked the number of hours of solar radiation for every month of the year, as shown in Figure 8.

Table 1 Basin Morphometric Parameters

Parameters	Data
Area (ha)	1500
Perimeter (km)	17.8
Channel's Average Gradient (m/m)	0.25
Upper Bound (m)	2500
Lower Bound (m)	431
Stream Bed's Upper Bound	2275
Main Stream Channel Length (km)	7.22

2.3 Calculation models

In order to determine water source mean flow rates, and thus determine the environmental flows, a hydrological

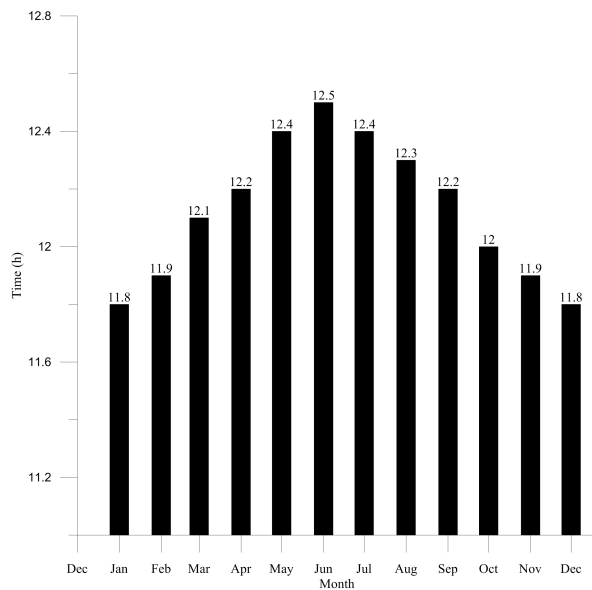


Figure 8 Number of sunshine hours per month

balance was performed. In it, we estimated run-off contributions and losses due to evaporation and infiltration based on rainfall and geomorphological parameters.

2.4 Determining basin shape and drainage parameters

Drainage density calculation

It is calculated by dividing the total length of the basin currents by the total area that contains them (Equation (1)):

$$D = \frac{\sum_{i=1}^n L}{A} \quad (1)$$

Where L is the length of the existing drainages, and A is the basin area in km².

This rate allows us to have a better understanding of the complexity and development of the basin's drainage system. In general, a greater run-off density is a sign of a greater network structure or greater potential for erosion. Drainage density varies inversely with the basin's extension [18]

Mean flow length calculation

It is defined as the mean distance that water must cover in the basin to reach a channel [19]. It is estimated through the relation between the area and four times the length of all the basin's channels, or the inverse of four times the drainage density (Equation (2)).

$$Lm = \frac{A}{4 \sum L_i} \quad (2)$$

Fluvial network hierarchical classification

The Horton method was used for the basin order's hierarchical classification [20]. This method numbers flow rates according to the tributaries that they have. Thus, the one that flows from the source and has no tributary is order 1, while the one that has two tributaries is order 2. If a channel has an order 1 tributary and an order 2 tributary, its order will be 3. The order of the channel increases one number at a time, so that even if a channel receives an order 2 and an order 3, its order would be 4. Each channel has a single order which will correspond with the highest order that it can have at the end of its course.

Mean basin height calculation

The mean height H is the average elevation with regard to the gauging station level at the basin mouth (Equation (3)) [21].

$$H = \frac{V}{A} \quad (3)$$

Where V is the volume between the curve and the axes. A is the basin area.

Height variation in a watershed has a direct impact on its temperature distribution, and therefore, on the existence of micro-climates and habitats typical of the prevailing conditions.

2.5 Use of rainfall data collected by the Olaya station

Rainfall is the variable with the greatest repercussion in hydrology because of its contribution to the total amount of water available in a hydrological system [22]. In mountainous areas, we must add the topographical influence to the stochastic nature of this variable in its spatial distribution [23].

As mentioned earlier, we used monthly rainfall records provided by the stations Olaya, Juan García, Cotové and Belmira because they are closest to the area studied. Based on these data, we calculated the mean rainfall using the Inverse-Square Law (ISL), whose Equation (4) is presented below [24].

$$h(x, y, t) = \frac{\sum_{i=1}^n \left[\frac{h_i(t)}{d_i^2} \right]}{\sum_{i=1}^n \frac{1}{d_i^2}} \quad (4)$$

Where $h_i(t)$ is the height of the rain in the observatory i in the time interval t considered; d_i is the distance between the point considered (x, y) and the observatory i, and n is the number of observatories.

With the data provided by the stations mentioned above, we established the basin mean rainfall. The rainfall isohyets across the territory were also drawn. The Figure 9 shows the spatial mean rainfall distribution in the area studied.

The Figure 9 also shows the variation of rainfall distribution in the basin.

This was recorded in digital format, and the annual accumulated amounts were determined. Thus, it is possible to see the driest years and the periods with the most rainfall.

With these records, the mean rainfall was determined, as well as maxima and minima per month. Thus, it is possible to determine the driest and wettest months.

2.6 Evaporation and transpiration in the basin

Since there are no available data regarding basin evaporation and transpiration, these were determined through established equations. Below is the calculation of each established parameter to determine the variables.

Mean basin temperature calculation

Initially, the basin geomorphological data were used to calculate mean temperatures using the Equation [5] [25], which relates height above sea level to temperature variation. It is widely used in the country's Andes region.

$$T = 29.38 - 0.0061 * H \quad (5)$$

Where T is the mean temperature in °C, and H is the basin mean height in meters above sea level.

It is known that throughout the year, the monthly temperature average varies in the tropics according to the rainfall regime, cloud coverage, and to a lesser degree, solar radiation.

Therefore, monthly change percentages were estimated taking into account mean monthly temperature variation. These percentages were used to obtain monthly average temperatures for the basin studied.

Maximum and minimum temperatures were estimated using the averages established in the previous equation and the data recorded by the station Cotové. The values were assessed with a weighting process.

Basin potential evapotranspiration calculation

On the basis of the previous estimates, potential evapotranspiration was calculated using the [26] Equation [6] [1982].

$$ETP = 0.0135 (T_{med} + 17.78) Rs \quad (6)$$

In this equation, ETP is monthly potential evapotranspiration in mm, T is mean temperature expressed in °C, and Rs is incident solar radiation (mm/d).

Solar radiation plays a very important role in hydrological modeling in semi-arid environments, since it is a key variable for water circulation in the atmosphere.

In order to calculate incident solar radiation, the Equation [7] was used [27] SAMANI (2000).

$$Rs = R_0 * KT * (T_{max} - T_{min})^{0.5} \quad (7)$$

Where R_0 is extraterrestrial radiation in mm/d; KT is an empirical coefficient that can be calculated on the basis of atmospheric pressure, but Hargreaves recommends a value of 0,162 for inland regions; T_{max} is maximum ambient temperature, and T_{min} is minimum ambient temperature.

Tables were used to determine R_0 , showing the monthly radiation mean values according to the geographic location in the area studied.

Monthly mean maximum and minimum temperatures were estimated on the basis of interpolation of data recorded by Cotové, located in Santa Fe de Antioquia.

Real evapotranspiration calculation

The Turc, and Coutagne Equations [8] were applied, and the results were used to determine an average.

The following expression is used to calculate the Turc equation [28] [1961].

$$EVR = \frac{P}{\sqrt{0.9 + \frac{P^2}{L^2}}} \quad (8)$$

Where EVR is real evapotranspiration, P is annual rainfall, and L was calculated using the Equation [9]:

$$L = 300 + 25T + 0.05T^3 \quad (9)$$

The Coutagne equation [29] [1954] is presented below [Equation (10)].

$$EVR = P - XP^2 \quad (10)$$

The equation data yield meters per year. The coefficient X is calculated as follows, (Equation (11)).

$$X = \frac{1}{0.8 + 0.14T} \quad (11)$$

Determining evapotranspiration

The evapotranspiration was obtained for each of the months and years of the assessment taking into account that when the rainfall is greater than the potential evapotranspiration, the latter becomes equal to real evaporation, (Equation (12)) [30].

$$\begin{aligned} \text{If } P < ETP \text{ and } P > ETR, ETP &= ETR \\ \text{Else } P &= ETR \\ \text{If } P > ETP, ETP & \end{aligned} \quad (12)$$

The ET's obtained are the average ET's for all the Barbuda Stream's basin considering weather variation, which is related to height distribution.

2.7 Determining flow rates

In order to determine the flow rate series, conceptual models have been used. The equations used for such models have a physical foundation, and they mean to simulate a basin's hydrological behavior through hydrological balance equations and equations of transfer among the diverse elements of the hydrological cycle [31].

The Stanford IV [32] and the Thornthwaite models are examples of this.

For this research project, the Thornthwaite model was used on the basis of a basin hydrological balance performed with the input flow due to rain, loss due to evaporation, and aquifer storage (considering soil properties). The baseflow was obtained with the surpluses. The model estimates that half of them become basin surface water. The equations used during this procedure are described.

Aquifer storage calculation

It is determined as a relation among rainfall (P), evapotranspiration (e) and storage capacity (W) in the soil as follows, [33] Thornthwaite and Mather (Equation (13)):

$$W = \begin{cases} (P_i - e_0 + W_{i-1}, W_0) \\ \text{if } P_i > e_0 \quad W_{i-1} \exp \left[\frac{P - e_0}{W_0} \right] \\ \text{if } P_i - e_0 + W_{i-1} < 0 \\ \text{else } P_i - e_0 + W_{i-1} \quad \text{if } P_i < e_0 \end{cases} \quad (13)$$

The Thornthwaite-Mather model [34] has had excellent results in Long Island (New York) [35] and Doñana Park in Spain [36] among others.

Calculation of surpluses in the basin

Surpluses relate rainfall to evaporation. There can be water surpluses only if rainfall is greater than evaporation, and if the soil is completely saturated (Equation (14)).

$$Exc = 0 \quad P < e \quad P - e + w_{i-1} - W_0 \quad P > e \quad (14)$$

If the surpluses are lower than 0, the value will be 0.

Run-Off calculation

Aquifer contributions, that is, a month's run-off in particular, is obtained by adding the following month's surpluses according to the series developed by [37] Thornthwaite (1957), adjusted through coefficients, in which the effect of vegetation is included [37] Alley (1984) for several models, (Equation (15)).

$$qi = \left\{ \lambda * Exc_i + \sum_{n=2}^i \lambda^n * Exc_{i-n} \quad \text{if } W_i \geq W_0 \right\} \quad (15)$$

According to soil storage calculations, the model adjusts to the T model proposed by Alley (1984), in which a coefficient λ of 0.75 for small basins is established. Thornthwaite suggested using a λ of 0.5. Therefore, it is selected considering that the Barbuda Stream is classified as such because its area is less than 20 km².

The results are calculated using the basin area and relevant conversion factors in order to obtain the run-off flow rate series to be used in subsequent analyses.

2.8 Environmental flow estimation

The flow rate series determined with the hydrological balance explained previously were used to estimate the environmental flows. The RVA methodology [38], Simplified models [39] and the concepts developed by Aguilar and Polo (2014) [40] were also employed. The procedure is presented below.

The RVA uses 33 hydrologic parameters to evaluate potential hydrologic alterations. Seventeen hydrologic parameters focus on the magnitude, duration, timing, and frequency of extreme events and geomorphology; the other sixteen parameters measure the central tendency of either the magnitude or rate of change of water conditions [41].

The methodology has been used for the determination of ecological flows in different research works, such as those conducted in more than 30 basins located in the United States of America (USA) and Canada [42], as well as in South Africa [43], Australia [44], and Spain [45].

Flow rate distribution function

A relation between each flow rate and the total number of determined flow rates recorded + 1 was calculated using the Equation (16).

$$Fm = \frac{(1, \dots, \text{number of records})}{\text{number of records} + 1} \quad (16)$$

The distribution function was expressed as the relation between the parameter Fm and the determined flow rates, from the lowest to the highest. The Figure shows the distribution function obtained for the flow rate series.

Estimation of percentiles 5 and 10

Percentiles 5 and 10 indicate the flow rate value, below which are 5% and 10% of the records in the group of total observations [46]. As the data group was ordered from lowest to highest, the fraction is for lower flow rates [47].

Each percentile was determined on a monthly basis by performing an interpolation of the relevant curve segments with a programming language developed on MATLAB, which translates as finite differences into the following expression (Equations (17) and (18)):

$$m = \frac{Fm_i - Fm_{i+1}}{Q_i - Q_{i+1}} \quad (17)$$

$$Q_{5 \text{ or } 10} = Q_{i+1} + \frac{\text{Percentile}_{5 \text{ or } 10} - Fm_{i+1}}{m} \quad (18)$$

Determining environmental flows for the Barbuda stream

The percentiles determined were used for environmental flows per month. Percentile 5 is the environmental flow that must be kept in dry periods, that is, the years in which an abnormal rainfall decrease takes place. Percentile 10 refers to wet periods, or years in which rainfall is above average.

In order to have water supply values, these can be compared with monthly flow rate averages in the source.

3. Results and discussion

3.1 Secondary information

In Figure 5, a bimodal trend is observed in the rainfall [48]. It shows two periods of special intensity in April-June and September-November. The greatest rainfall accumulation takes place in May. Dry periods comprise the months December-March and July-August. The least rainfall takes place in January and February.

During the research period, we noted important "El Niño" climate phenomena for 1992-1994, 1997 and 2002 years, and significant "La Niña" climate phenomena for the 1995-1996, 1998-2001 and 2010 [49]. The minimum and maximum rainfalls values were recorded during Boy and Girl phenomena periods [50], respectively (Figures 6 and 7).

3.2 Basin shape and drainage parameters

Table 2 shows the shape and drainage results determined for the Barbuda Stream basin using the equations mentioned in the previous section.

Table 2 Shape and drainage parameters calculated for the Barbuda stream basin

Parameters	Data
Area (ha)	1500
Perimeter (km)	17.8
Gradient (m/m)	0.25
Drainage Density (km/km ²)	1.45
Flow Mean Length (km)	0.13
Concentration Time (min)	102
Total Main Channel Length (km)	7.22
Total Length of Channels (km)	21.79
Order Number	4

According to the parameters determined, we can establish that the basin studied has a very small area: less than 20 km² [51]. It has an elongated shape because of its perimeter.

According to the results obtained, the basin has low drainage density, since it is between 0.5 and 1.5.

Based on the mean flow length parameter, we can determine that the distance covered by a drop of water from any place in the basin is short, which can be associated with high gradients in the area.

The basin mean gradient shows us that it is located in very uneven ground with steep slopes. Therefore, water flow can cause very strong flash floods.

According to the basin order, determined with the

Horton index, it is classified as a meso-scale basin, since the value obtained is between 4 and 6.

3.3 Rainfall as measured by the stations

After using the ISL method to calculate the spatial mean rainfall, rainfall isohyets of the region determined by the stations were created, as shown in Figure 9.

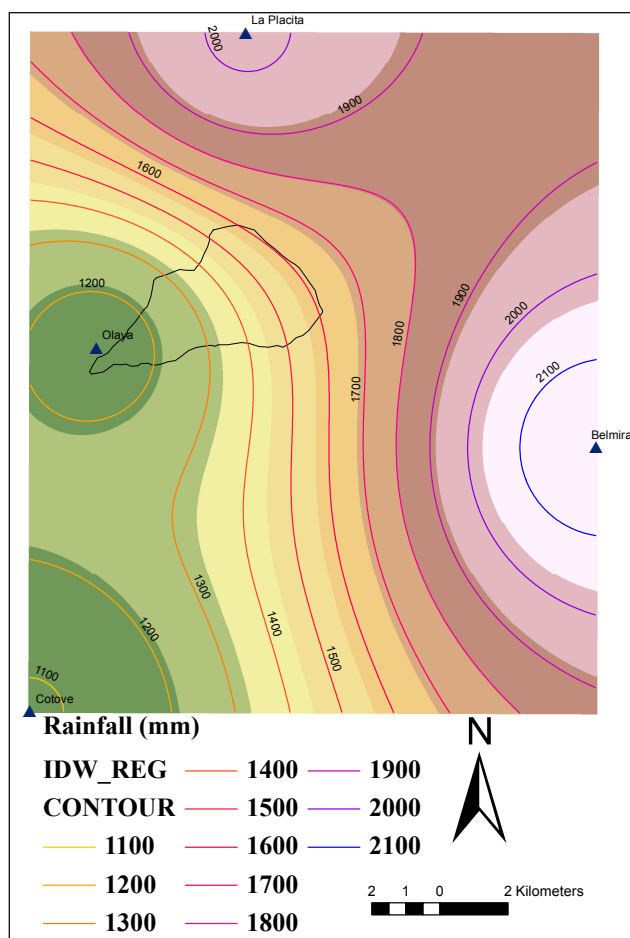


Figure 9 Isohyetal map, region of interest

It was determined that the annual mean rainfall in the basin is 1398.9 mm. The basin is influenced mainly by the areas close to the Cauca River, which are characterized as a tropical dry forest life zone. The rainfall regime in these zones ranges between 1000 mm and 2000 mm per year [52]. Figure 10 shows the drawing of rainfall isohyets within the basin, for which ArcGIS 10 was used.

The mean rainfall results are influenced by much wetter areas located at the top of the basin, close to the stations Belmira and Juan García. Therefore, the rainfall average recorded by the stations is slightly superior to those

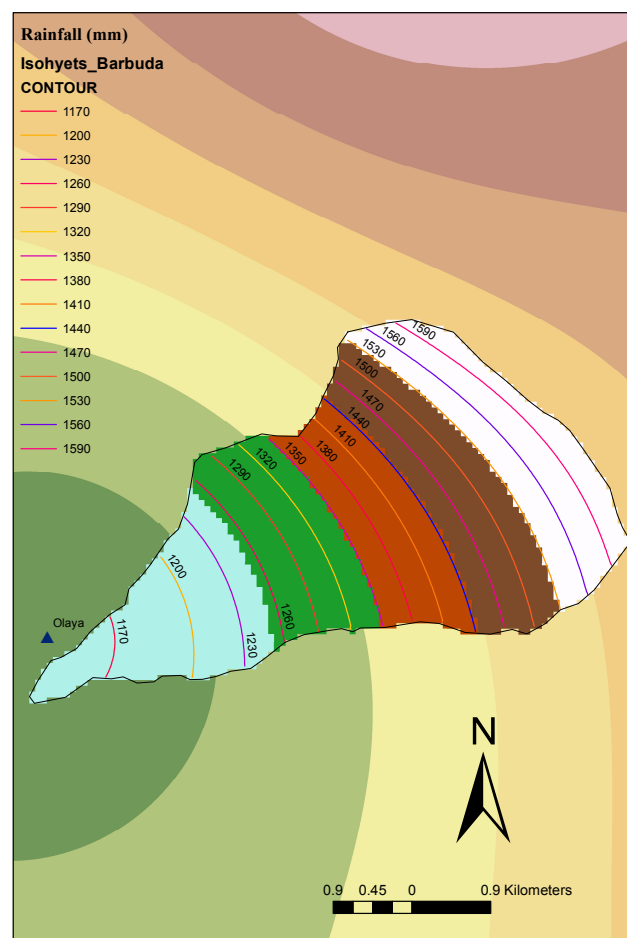


Figure 10 Isohyetal map of the Barbuda stream basin

obtained in the areas alongside the Cauca River. However, the result tends to be similar to the one established for that region [53].

The annual average rainfall distribution, calculated on a monthly basis with ISL is shown in Figure 11.

3.4 Basin evapotranspiration

Extraterrestrial solar radiation

Initially, the data related to the number of hours of solar irradiation and radiation for every month of the year were used to determine the extraterrestrial radiation perceived in the basin area by applying relevant conversion factors to express it in mm/d. Data are shown in Figure 12.

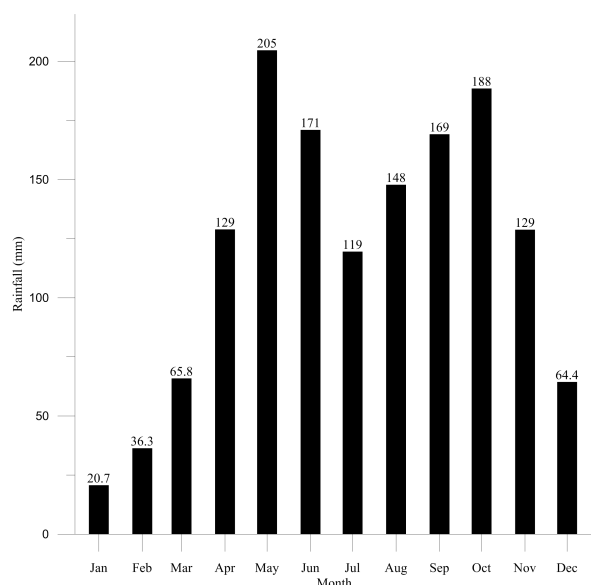


Figure 11 Mean rainfall for the Barbuda stream basin

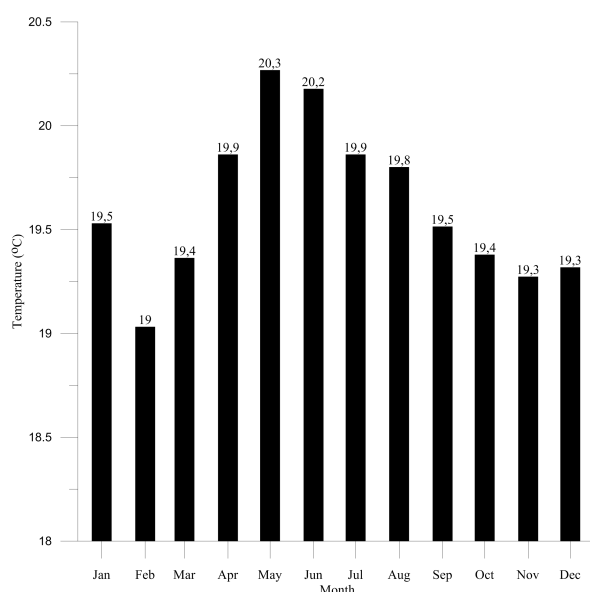


Figure 13 Monthly mean temperature variation in the Barbuda stream basin

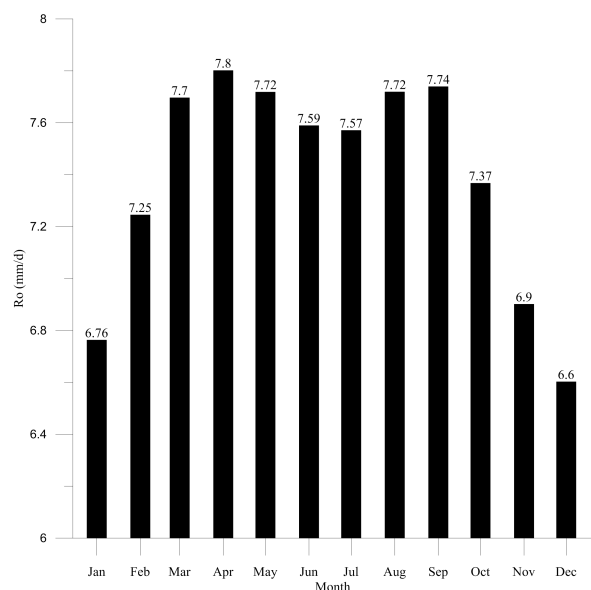


Figure 12 Extraterrestrial Solar radiation in the Barbuda stream basin

Temperature distribution

The determination of basin mean temperature took into account the distribution of areas. According to the altitudinal zone, it is 19.6 °C. The value obtained was used to calculate the temperature distribution month by month, as shown in Figure 13.

Incident solar radiation

By using the expression mentioned above, maximum and minimum temperature values obtained for the basin, incident solar radiation and other coefficients were

incorporated. Thus, the incident radiation results, referenced in Figure 14, were obtained.

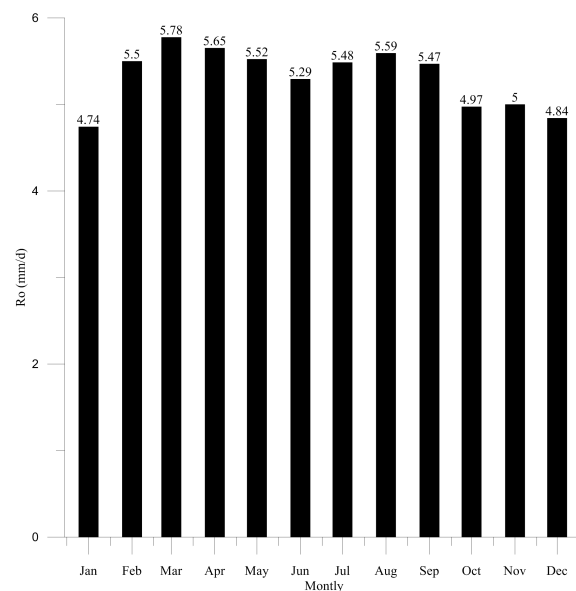


Figure 14 Incident solar radiation in the Barbuda stream basin

Potential evapotranspiration

The Hargreaves equation with the incident solar radiation results and temperature distribution was used to determine the potential evapotranspiration values for each month of the year. The results are shown in Figure 15.

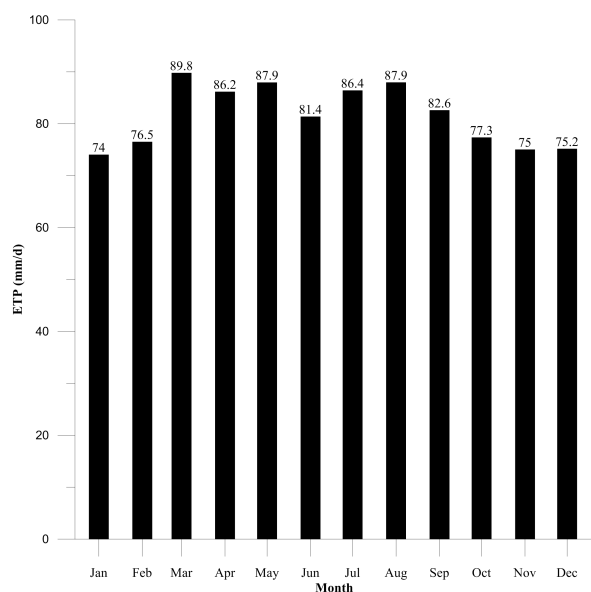


Figure 15 Potential evapotranspiration for every month of the year in the Barbuda stream basin

Real evapotranspiration

Based on the rainfall series obtained with ISL and the temperature distribution in the basin, the real evapotranspiration was determined using the Turc, and Coutagne equations. Temperature data were used to determine parameters associated with the equations.

An annual value of **1167.68** for L was obtained with the Turc equation, and of **0.282** for X with the Coutagne equation.

Annual ETR results are presented in Table 3.

Figure 16 shows the real evapotranspiration results obtained month by month with each equation and their average.

In order to determine ETR results month by month, the averages of the equations applied were used. This was also applied to the ETP results. Thus, the ET results for each month of the years for which there are rainfall records were obtained.

Based on the relations between real and potential evapotranspiration and rainfall, we obtained the final ET results to estimate the hydrological balance. Figure 17 shows the average results estimated on the basis of final ET results, which were used for the hydrological balance.

Table 3 Results of annual real evapotranspiration calculations

Year	Coutagne	Turc	Average
1990	879.55	963.11	921.33
1991	740.22	804.40	772.31
1992	622.21	686.39	654.30
1993	839.43	906.53	872.98
1994	802.43	866.72	834.58
1995	818.58	883.60	851.09
1996	872.60	1020.88	946.74
1997	624.21	688.44	656.33
1998	874.10	952.72	913.41
1999	868.49	1024.51	946.50
2000	873.80	952.22	913.01
2001	820.94	886.11	853.52
2002	661.50	726.20	693.85
2003	789.95	853.97	821.96
2004	867.25	941.86	904.56
2005	829.01	894.86	861.94
2006	886.15	995.75	940.95
2007	884.66	976.94	930.80
2008	886.07	996.36	941.21
2009	778.23	842.16	810.20
2010	880.90	1010.64	945.77
2011	884.88	1001.69	943.28
2012	737.71	801.93	769.82
2013	797.45	861.60	829.53
2014	715.31	779.79	747.55

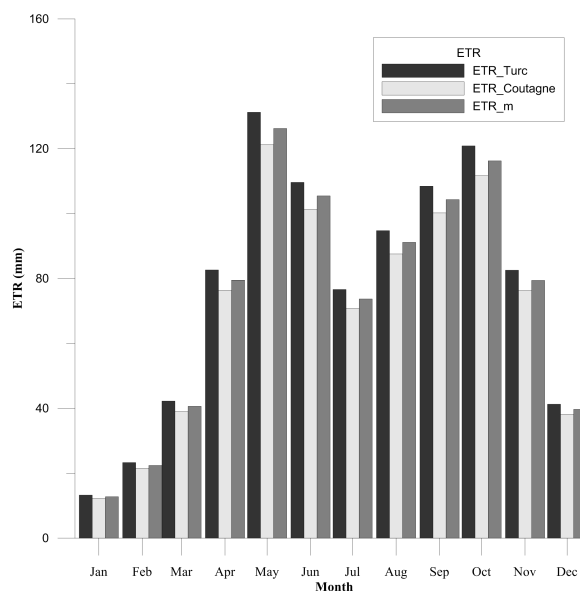


Figure 16 Real evapotranspiration for every month of the year in the Barbuda stream basin

3.5 Aquifer storage

The relations between rainfall and evaporation were used to obtain average results for the years studied (Figure 18).

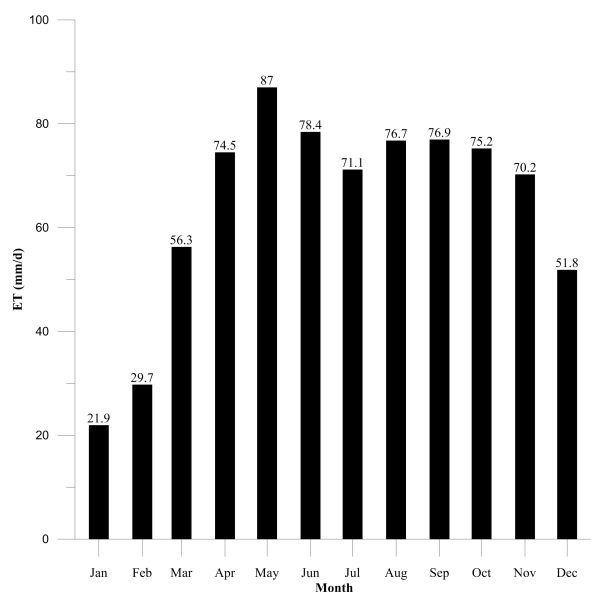


Figure 17 Evapotranspiration for every month of the year in the Barbuda stream basin

During the first months of the year, the amount of water stored in the soil decreases. This is also true in August, which is not surprising, due to the decrease of rain and increase of evapotranspiration during that time.

Surpluses

The surpluses were determined on the basis of the relations rainfall/evaporation/aquifer storage capacity established in the previous sections. Thus, monthly results were obtained for each year analyzed. The averages are presented in Figure 19.

It is observed that minima are reached in January, February and March. Even though rainfall increases during these months, the rain will mostly infiltrate the soil because of the lack of rainfall at the beginning of the year, which reduces moisture storage. Then the soil reaches its saturation level, and surpluses gradually increase.

3.6 Monthly Average Flow Rates

The water source average flow rates were determined using the series established for calculating aquifer run-off, which takes into account surpluses of the previous month, as well as previous accumulated amounts. The results were obtained for every month of every year studied. With these values, a flow rate average of 24 years was determined. Besides, the maxima and minima of the series were established. The above can be seen in Figure 20.

It is generally observed that the flow rates obtained tend

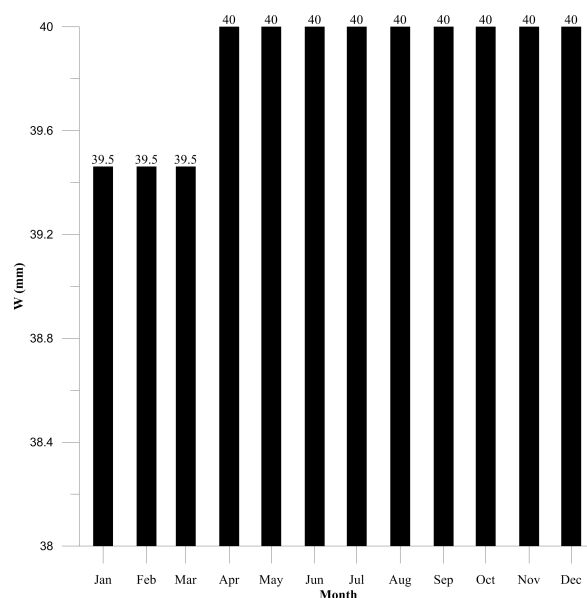


Figure 18 Storage for every month of the year in the Barbuda stream basin

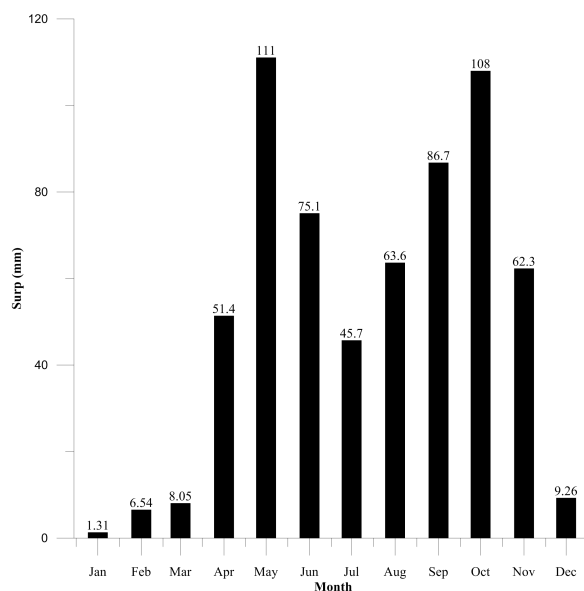


Figure 19 Surpluses for every month of the year in the Barbuda stream basin

to be higher during the months with more surpluses and rainfall, especially in September and October.

3.7 Environmental Flows

With the flow rates obtained, the data distribution function was determined. It is shown in Figure 21.

After applying the methodology described, we obtained the following series of minimum flow rates associated with percentiles 5 and 10, which are for extremely dry or

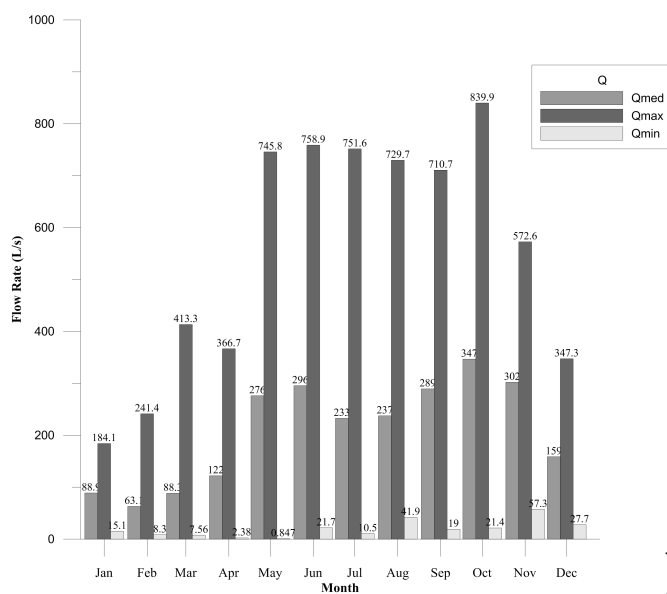


Figure 20 Flow rates estimated for every month of the year in the Barbuda stream basin

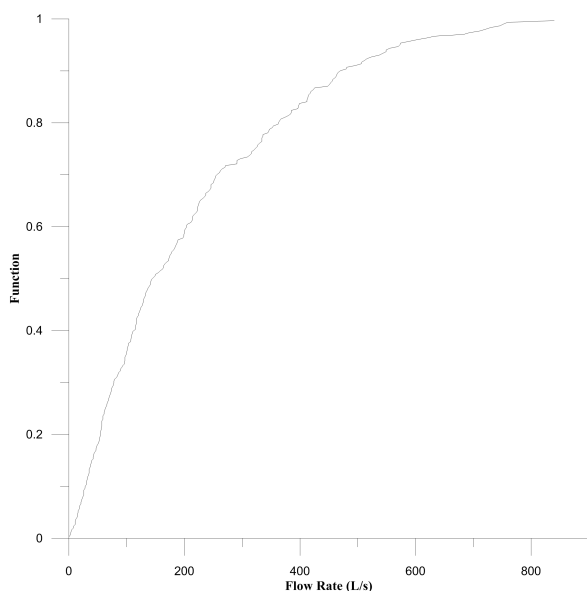


Figure 21 Distribution function for the flow rates series

wet periods. Table 4 shows the results.

Minimum environmental flows occur during the periods of lower aquifer storage rates, that is, in February, March and April. These coincide with the periods mentioned before, since there are droughts during December, January and February, so accumulation of water in the basin decreases. This period lasts until April because, despite the rain, the soil has just begun to recharge [54]. Therefore, most of the water infiltrates the soil, and there is little surplus contribution.

Table 4 Calculation of flow rates for percentiles 5 and 10

Month	Flow Rates 5 (l/s)	Flow Rates 10 (l/s)
January	15.65	31.8
February	8.35	20.7
March	8.3	17.8
April	3.05	5.9
May	18.15	60.9
June	23.3	184.8
July	11.6	138.9
August	42.55	60.6
September	20	69.4
October	24.2	134.4
November	57.35	146.08
December	28.35	69.2

The RVA approach enabled the analysis of the hydrological changes of the River. The results (Table 4) show that hydrologic changes of mean monthly flow in the dry (January, February, March and August) and wet periods (April, May, October and November) are more obvious than other months in the transition periods. The annual climate variability was established. The flow rates in extremely wet periods are two to three times higher than dry periods.

During baseflow periods, the basin can reach values of up to 3.05 l/s. This is a sign that there may be little surface water supply and shortages for the various uses that water is given along the channel, which is an issue because this is the water source of the municipality and many surrounding villages. Therefore, hydrological planning is suggested on the basis of this study's results in order to make the most of the resource during times of drought.

According to CORANTIOQUIA, the Barbuda river had an available flow rate of 102,3 L/s for water supply. According to the findings, the available flow rate value exceeds the environmental flows establish in dry periods. However, it is putting at risk the water supply.

4. Conclusions

- The mean flow rates obtained with the method implemented match those gauged at the source for each of the months and years evaluated. Therefore, it has been proved that the model created is a useful tool to calculate flow rate series when there is little rainfall data.
- Rainfall distribution in the area is mainly affected by the dry regimes that take place near the valley of the Cauca River. However, rainfall increases gradually as height increases in the mountain. Therefore, a mean

rainfall that exceeded that of more representative basin life zones was obtained.

- Flow rates maxima and minima are monthly averages, therefore, the peaks may be higher or lower for shorter time scales.
- According to the geomorphological parameters assessed and the observations that took place, the basin can be classified as a ravine. The criteria for this classification are based on the steep gradients, little storage capacity in the soil and scattered vegetation cover, typical of life zones classified as tropical dry forest.
- The flow rate series obtained show great variations between the flow rates recorded during wet and dry periods. This is in tune with a basin classified as a ravine.
- The environmental flows obtained with this methodology, with regard to years with a drought trend, ranged between 3.05 l/s during drier months and 57.35 l/s during rainy months. With regard to years with more rain, environmental flows between 5.90 l/s during drier months and 184.8 l/s during wetter months were obtained. The results determined match those expected for a basin such as the one evaluated, and they have been verified against previous records.
- The model developed in this study is perfectly applicable to similar basins. The only primary information required will be rainfall data, geomorphological parameters and mean temperatures. In order to obtain more accurate results, detailed rainfall series, such as those recorded on a daily basis, must be used. Thus, maximum and minimum flow rates will be determined within a clearer time scale.
- We used the environmental flows obtained to determine that the basin flow rates may decrease greatly, even to levels of total drought. This will significantly affect the population that benefits from the water source. This might cause a health emergency in the region or prevent agricultural activities that represent the livelihood of many families.

References

- [1] M. L. Izquierdo and S. M. Madroñero, "Régimen de caudal ecológico, herramienta de gestión para conservar la biota acuática," *Ciencia e ingeniería neogranadina*, vol. 23, no. 2, pp. 77-94, 2013.
- [2] M. A. Almazán, J. Chóliz, and C. Sarasa, "Environmental flow management: an analysis applied to the ebro river basin," *Journal of cleaner production*, vol. 182, pp. 838-851, May 2018.
- [3] R. Davis and R. Hirji, "Water resources and environment technical note C. 1," The world bank, Washington, D.C., Tech. Rep. C.1, Mar. 2003.
- [4] *Establecimiento de caudales ecológicos en España como nexo entre la Directiva Marco del Agua y la Directiva Hábitats*, CEDEX (Ministerio de Fomento - Ministerio de Medio Ambiente y Medio Rural y Marino, Madrid, España, 2010).
- [5] J. M. King, R. E. Tharme, and M. S. D. Villiers, "Environmental Flow Assessment for Rivers: Manual for the Block Building Methodology," Water Research Commission, Pretoria, South Africa, Tech. Rep. TT 131/00 de WRC, 2000.
- [6] L. M. Castro, Y. Carvajal, and E. A. Monsalve, "Enfoques teóricos para definir un Caudal Ambiental," *Ingeniería y Universidad*, vol. 10, no. 2, pp. 179-195, Jul. 2006.
- [7] M. J. Stewardson and C. J. Gippel, "Incorporating flow variability into environmental flow regimes using the flow events method," *River Research and Applications*, vol. 19, no. 5-6, pp. 459-472, Sep. 2003.
- [8] E. A. P. Rodríguez, "Modelamiento y manejo de las interacciones entre la hidrología, la ecología y la economía en una cuenca hidrográfica para la estimación de caudales ambientales." Master's thesis, Universidad Nacional de Colombia Sede Medellín, Feb. 2013, magister en Ingeniería - Recursos Hidráulicos.
- [9] IDEAM, Instituto Colombiano de Hidrología, Meteorología y Estudios Ambientales. MINAMBIENTE. Accessed Feb. 25, 2016. [Online]. Available: <http://institucional.ideam.gov.co/jsp/loader.jsf?lServicio=Usuarios&lTipo=usuarios&lFuncion=login&>
- [10] Instituto de Hidrología, Meteorología y Estudios Ambientales. (2014) Trámites y servicios. Minambiente. Colombia. [Online]. Available: <http://www.ideam.gov.co/web/atencion-y-participacion-ciudadana/tramites-servicios>.
- [11] Instituto Geográfico Agustín Codazzi, IGAC. (2010) Mapas de Colombia. Accessed Mar. 14, 2016. [Online]. Available: <http://www.igac.gov.co/wps/portal/igac/raiz/iniciohome/MapasdeColombia/Descargas>
- [12] Regional de Occidente S. A. E. S. P., "Estudios y Diseños del Plan Maestro de Acueducto y Alcantarillado de los Municipios de San Jerónimo, Santa Fe de Antioquia, Sopetrán, Olaya y el corregimiento de Sucre," Saneambiente Ltda, Medellín, Colombia, Tech. Rep., 2011.
- [13] *Plan de Manejo y Saneamiento de Vertimientos*, Secretaría de Planeación y Obras Públicas, Olaya, Antioquia, Colombia, 2008.
- [14] *Programa Quinquenal de Uso Eficiente y Ahorro del Agua Municipio de Olaya*, Regional de Occidente S. A. E. S. P, San Jerónimo, Antioquia, Colombia, 2014.
- [15] Ministerio de Ambiente and Vivienda y Desarrollo Territorial and IDEAM, *Protocolo para el Monitoreo y Seguimiento del Agua*. Bogotá, Colombia: Imprenta Nacional de Colombia, 2007.
- [16] T. C. Lampoglia, R. Agüero, and C. Barrios. (2008) Orientaciones sobre agua y saneamiento para zonas rurales. Asociación Servicios Educativos Rurales. Lima, Perú. [Online]. Available: <https://bit.ly/2J5TUE9>
- [17] Annex 2. *Meteorological tables*, Crop evapotranspiration - Guidelines for computing crop water requirements - FAO Irrigation and drainage paper 56, FAO - Food and Agriculture Organization of the United Nations, Rome, Italy, 1998.
- [18] G. D. la Lanza, C. Cáceres, S. Martínez, and S. Hernández, *Diccionario de hidrología y ciencias afines*, 1st ed. Universidad de Baja California Sur, Plaza y Valdés Editores, 1993.
- [19] D. Campos, *Procesos del ciclo hidrológico*. San Luis Potosí, México: Universidad Autónoma de San Luis Potosí, 1998.
- [20] J. M. Gisbert, "Caracterización hidrológica y de los procesos erosivos en la cabecera del río Monachil (Granada)," Ph.D. dissertation, Departamento de Geodinámica, Universidad de Granada, Granada, España, 2005.
- [21] W. Viessman, *Introduction to Hydrology*, 4th ed. press Harper Collins, 1995.
- [22] A. E. Torres, *Apuntes de clase sobre hidrología urbana*. Bogotá, Colombia: Pontificia Universidad Javeriana, 2004.
- [23] V. T. Chow, D. R. Maidment, and L. W. Mays, *Hidrología Aplicada*. Bogotá, Colombia: McGraw Hill, 1994.
- [24] P. Gomez, R. Navarro, and C. A. Porro, "Comportamiento hidrológico

- y su relación con el estado del pinar de repoblación en la sierra de los Filabres [Almería],” M.S. thesis, Grupo de Dinámica de Flujos Biogeoquímicos, Universidad de Córdoba, Córdoba, España, 2011.
- [25] B. Chávez and A. Jaramillo, “Regionalización de la temperatura del Aire en Colombia,” *Avances en Recursos Hídricos*, no. 6, pp. 37–42, Sep. 1999.
- [26] G. H. Hargreaves, “Estimating potential evapotranspiration,” *Journal of the Irrigation and Drainage Division*, vol. 108, no. 3, pp. 225–230, Sep. 1982.
- [27] Z. Samani, “Estimating Solar Radiation and Evapotranspiration Using Minimum Climatological Data,” *Journal of Irrigation and Drainage Engineering*, vol. 126, no. 4, pp. 265–267, 2000.
- [28] L. Turc, “Estimation of Irrigation Water Requirements, Potential Evapotranspiration: A Simple Climatic Formula Evolved Up to Date,” *Ann. Agronomy*, vol. 12, pp. 13–49, 1961.
- [29] A. Coutagne, “Quelques considérations sur le pouvoir évaporant de l’atmosphère, le déficit d’écoulement effectif et le déficit, d’écoulement maximum,” *La Houille Blanche*, no. 3, pp. 360–374, Jun. 1954.
- [30] S. Martos, “Investigación hidrogeológica orientada a la gestión racional de acuíferos carbonáticos sometidos a un uso intensivo del agua subterránea. el caso de la Sierra de Estepa (Sevilla),” Ph.D. dissertation, Departamento de Geodinámica, Universidad de Granada, Granada, España, 2008.
- [31] A. Valenzuela, “Estudio Hidrogeológico Para La Gestión Integrada De La Cuenca Del río Guadalfeo (Granada),” Ph.D. dissertation, Grupo de Ríos y Embalses; Centro Andaluz de Medio Ambiente; Universidad de Granada, Granada, España, 2006.
- [32] N. A. Crawford and R. K. Linsley, “Digital Simulation in Hydrology/Stanford Watershed Model 4,” Department of Civil Engineering, Stanford University, Stanford, CA, Tech. Rep. NO 39, 210 PP, 41 REF, 1966.
- [33] C. W. Thornthwaite and J. R. Mather, *The water balance*, VIII ed. Centerton, New Jersey: Drexel Institute of Technology, Laboratory of Climatology, 1955.
- [34] C. W. Thornthwaite, J. R. Mather, and D. B. Carter, *Instructions and tables for computing potential evapotranspiration and the water balance*, 10th ed. Centerton, New Jersey: Drexel Institute of Technology, Laboratory of Climatology, 1957.
- [35] T. S. Steenhuis and W. H. V. D. Molen, “The Thornthwaite-Mather procedure as a simple engineering method to predict recharge,” *Journal of Hydrology*, vol. 84, no. 3–4, pp. 221–229, May 1986.
- [36] J. V. Giráldez and et al., “Variación temporal de la recarga al acuífero freático del Parque Natural de Doñana, Huelva,” *Boletín geológico y minero*, vol. 111, no. 1, pp. 77–88, 2000.
- [37] W. M. Alley, “On the treatment of evapotranspiration, Soil Moisture Accounting, and Aquifer Recharge in Monthly Water Balance Models,” *Water Resources Research*, vol. 20, no. 8, pp. 1137–1149, 1984.
- [38] B. D. Richter, J. V. Baumgartner, J. Powell, and D. P. Braun, “A method for Assessing Hydrologic Alteration within Ecosystems,” *Conservation Biology*, vol. 10, no. 4, pp. 1163–1174, 1996.
- [39] J. Hernández and L. Burbano, “Revisión de los Modelos Ecohidráulicos Unidimensionales (1D) y Bidimensionales (2D) en Corrientes Fluviales,” *Avances en recursos hídricos*, no. 15, 2007.
- [40] C. Aguilar, M. Egüen, J. M. Perales, M. A. Losada, and M. J. Polo, “Stochastic Assessment of environmental flows in semiarid environments,” in *11th International Conference on Hydroinformatics*, New York City, USA., 2014.
- [41] D. C. Yongqin and et al., “Hydrologic alteration along the Middle and Upper East River (Dongjiang) basin, South China: a visually enhanced mining on the results of RVA method,” *Stochastic Environmental Research and Risk Assessment*, vol. 24, no. 1, pp. 9–18, Jan. 2010.
- [42] B. Richter, J. Baumgartner, R. Wigington, and D. Braun, “How much water does a river need?” *Freshwater Biology*, vol. 37, no. 1, pp. 231–249, 1997.
- [43] G. Jewitt and et al., “Modelling Abiotic-biotic Links in the Sabie River,” Institute for Water Research Rhodes University, Tech. Rep. No 777/1/98, 1998.
- [44] A. Arthington and R. Lloyd, “Logan river Trial of the Building Block Methodology for Assessing Environmental Flow Requirements,” Centre for Catchment and In-stream Research and Department Natural Resources, Brisbane, Australia, Tech. Rep., May 1998.
- [45] C. Aguilar and M. J. Polo, “Assessing minimum environmental flows in nonpermanent rivers: The choice of thresholds,” *Environmental Modelling and Software*, vol. 79, pp. 120–134, Feb 2016.
- [46] M. Evans and J. Rosenthal, *Probabilidad y estadística*, 3rd ed. Reverté, 2005.
- [47] B. D. Richter, “Re-thinking environmental flows: from allocations and reserves to sustainability boundaries,” *River Research and Applications*, vol. 26, no. 8, pp. 1052–1063, 2010.
- [48] Ministerio de Medio Ambiente, Medio Rural y Marino. [2013]. [Online]. Available: http://www.chebro.es:81/Plan%20Hidrologico%20Ebro%202010-2015/Memoria/1.-%20Memoria_PHE_v3_9.pdf
- [49] C. Arango, J. Dorado, D. Guzmán, and J. Ruiz. [2012, Dec.] Cambio Climático más probable para Colombia a lo largo del siglo XXI respecto al clima presente. [Online]. Available: <http://www.ideam.gov.co/documents/21021/21138/Escenarios+Cambio+Climatico+%28Ruiz%2C+Guzman%2C+Arango+y+Dorado%29.pdf/fe5d64fb-3a82-4909-a861-7b783d0691cb>
- [50] G. Poveda, D. M. Álvarez, and Ó. A. Rueda, “Hydro-climatic variability over the Andes of Colombia associated with ENSO: a review of climatic processes and their impact on one of the Earth’s most important biodiversity hotspots,” *Climate Dynamics*, vol. 36, no. 11, pp. 2233–2249, Jun. 2011.
- [51] INDERENA, “Enfoque del trabajo de extensión en proyectos de conservación de pequeñas cuencas hidrográficas,” unpublished.
- [52] G. Budowski, “The choice and classification of natural habitats in need of preservation in Central America,” *Turrialba*, vol. 15, pp. 238–246, 1965.
- [53] C. Y. Osorio, “Dinámica del Clima y la vegetación en los Últimos 200 años del Holoceno en el humedal la bramadora (antioquia-colombia),” M.S. thesis, Escuela de Geociencias, Facultad de Ciencias, Universidad Nacional de Colombia, Medellín, Colombia, 2016.
- [54] M. V. Vélez and R. L. Rhenals, “Determinación de la recarga con isotopos ambientales en los acuíferos de Santa Fe de Antioquia,” *Revista Boletín Ciencias de la Tierra*, no. 24, pp. 37–54, 2008.